

Syracuse Metropolitan Transportation Council Unified Planning Work Program



2015 - 2016 UPWP



2015-2016 UNIFIED PLANNING WORK PROGRAM
FOR TRANSPORTATION PLANNING
in the
SYRACUSE
METROPOLITAN PLANNING AREA

**Adopted by the Policy Committee of the
Syracuse Metropolitan Transportation Council**

February 17, 2015

This document has been ADOPTED by the Syracuse Metropolitan Transportation Council (SMTC). The SMTC Member Agencies agree to the contents and will adhere to said document as necessary and to the best of their ability.

This document was prepared with financial assistance from the Federal Highway Administration and the Federal Transit Administration of the U.S. Department of Transportation through the New York State Department of Transportation. The SMTC is solely responsible for its content.

**SYRACUSE METROPOLITAN TRANSPORTATION COUNCIL
2015-2016 UNIFIED PLANNING WORK PROGRAM**

TABLE OF CONTENTS

<u>Section</u>	<u>Page</u>
RESOLUTION	4
2015-2016 UNIFIED PLANNING WORK PROGRAM - PURPOSE	6
DEVELOPMENT OF THE UNIFIED PLANNING WORK PROGRAM	6
COUNCIL ORGANIZATION	8
SMTC COMMITTEE STRUCTURE	10
SMTC STAFFING	11
OPERATIONAL PROCEDURES AND BYLAWS	11
TITLE VI POLICY	11
UNIFIED PLANNING WORK PROGRAM FRAMEWORK	12
2014-2015 UPWP ACCOMPLISHMENTS	14
SUMMARY OF MAJOR PROGRAMMED ACTIVITIES	15
NYS MPO SHARED COST INITIATIVES	16
2015-2016 UNIFIED PLANNING WORK PROGRAM OUTLINE	17
1. PROGRAM ADMINISTRATION AND SUPPORT	18
2. SHORT RANGE TRANSPORTATION PLANNING	24
3. LONG RANGE TRANSPORTATION PLANNING	30
4. TRANSPORTATION IMPROVEMENT PROGRAM	54
5. OTHER ACTIVITIES	56
6. BUDGET TABLES	58
<u>2015-2016</u>	
TABLE 1 - SUMMARY BUDGET	59
TABLE 2 - SUMMARY BUDGET - FEDERAL PROGRAMS ONLY	60
TABLE 3 - FHWA BUDGETS	61
TABLE 4 - FTA BUDGETS	62
TABLE 5 - TOTAL AUDITABLE BUDGET	63
TABLE 6 - STATE PLANNING & RESEARCH FUNDING	64
APPENDICES	65
APPENDIX A (Other Significant Federally Funded Transportation Planning Activities - SPR)	66

RESOLUTION

**SYRACUSE METROPOLITAN TRANSPORTATION COUNCIL
POLICY COMMITTEE**

February 17, 2015

- WHEREAS,** In order to promote a coordinated, continuous and comprehensive transportation planning process in the Syracuse Metropolitan Area, which is comprised of Onondaga County and portions of Madison and Oswego counties, it has been found necessary to develop an annual Unified Planning Work Program (UPWP); and
- WHEREAS,** the Moving Ahead for Progress in the 21st Century (MAP-21) transportation authorization has committed funds for metropolitan transportation planning activities; and
- WHEREAS,** the SMTC Planning Committee has worked with the assistance of the Central Staff to develop a recommended UPWP so that the latest draft submitted herewith represents an accurate description of work to be undertaken and funds to be made available; and
- WHEREAS,** in recognition of the need to promote energy conservation and overall efficiency of the existing transportation system, the UPWP pursues work on several projects including (1) the Long-Range Transportation Plan, and (2) the Transportation Improvement Program; and
- WHEREAS,** the Policy Committee is committed to assuring equal opportunity to all persons in the planning of transportation services and facilities; and
- WHEREAS,** in order to support these and other elements of the 2015-2016 UPWP, the Policy Committee continues its designation of the NYSDOT to be the grant applicant on behalf of the SMTC. The NYSDOT will apply for necessary regular program funding under the Federal Transit Administration (FTA) Section 5303 program, under the Federal Highway Administration (FHWA) "PL" transportation planning program and "SPR" program in amounts consistent with this approved UPWP.

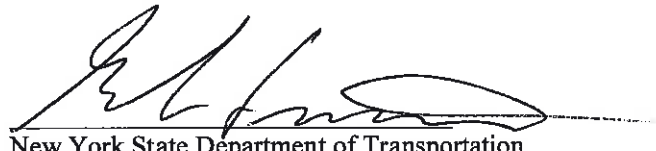
NOW THEREFORE BE IT RESOLVED, that the Policy Committee adopts the 2015-2016 Unified Planning Work Program and the submission thereof to the appropriate Federal and State agencies and directs the filing of appropriate applications to support the program; and

BE IT FURTHER RESOLVED, that the Policy Committee authorizes the Planning Committee or the Executive Committee as appropriate, to make revisions and refinements in funding or responsibility to the UPWP as found necessary both to finalize and implement the UPWP consistent with its overall scale and program emphasis.

Done and ordered this 17th day of February 2015 by consensus of the SMTC Policy Committee.



Hon. Kathleen Rapp
Chairperson
SMTC Policy Committee



New York State Department of Transportation
Secretary
SMTC Policy Committee

Date: February 17, 2015

Date: February 17, 2015

SYRACUSE METROPOLITAN TRANSPORTATION COUNCIL

2015-2016 UNIFIED PLANNING WORK PROGRAM (UPWP) - PURPOSE

The Unified Planning Work Program (UPWP) incorporates in one document all transportation planning and directly supporting comprehensive planning activities in the Syracuse Metropolitan Area during State fiscal years 2015-2016 (April 1, 2015 - March 31, 2016). It is intended to provide a mechanism for the coordination of transportation planning efforts by local, State, and regional agencies through the Syracuse Metropolitan Transportation Council (SMTC).

The U.S. Department of Transportation (USDOT) and its modal administrations [i.e., the Federal Highway Administration (FHWA) and the Federal Transit Administration (FTA)] require this UPWP as a basis and condition for all funding assistance for transportation planning to State, local and regional agencies. The authority for this requirement is found in two separate Federal legislative acts establishing transportation planning programs:

1. Title 23, U.S. Code Section 134 (Federal Aid Highway Act of 1962, as amended)
2. Title 49, U.S. Code Section 1603 et. al.: (Urban Mass Transportation Act of 1964, as amended).

DEVELOPMENT OF THE UNIFIED PLANNING WORK PROGRAM

As the Metropolitan Planning Organization (MPO) designated by the Governor of the State of New York, the SMTC has the responsibility to carry out the continuous, comprehensive and cooperative transportation planning process for the Syracuse Metropolitan Area. This area consists of Onondaga County, the Town of Sullivan in Madison County, and the Towns of Hasting, Schroepfel, West Monroe and a small portion of Granby in Oswego County. The Unified Planning Work Program identifies the transportation planning activities which are to be undertaken in the SMTC study area in support of the goals, objectives and actions established in the Long Range Transportation Plan (LRTP), which was originally adopted in January 1995 and updated in 1998, 2001, 2004, 2007, and 2011. The SMTC Central Staff, working with the Planning Committee and the New York State Department of Transportation (NYSDOT), initiates the process of developing the UPWP and prepares a final draft for both Planning and Policy Committee consideration. The intent in developing a comprehensive Work Program is to ensure that a coordinated transportation planning process occurs in the region, which will make positive contributions toward achievement of the established Long Range Transportation Plan goals regarding mobility, facilities, safety, the environment, economy and land use.

The SMTC's Operations Plan outlines a framework for the UPWP that the Central Staff is expected to accomplish, and provides guidance with respect to a financial plan to support the Work Program. This 2015-2016 Work Program is intended to be consistent with the Operations Plan, as well as the metropolitan planning requirements of the Federal Safe, Accountable, Flexible, Efficient Transportation Equity Act: A Legacy for Users (SAFETEA-LU) and Moving Ahead for Progress in the 21st Century (MAP-21) and its implementing regulations. Compliance with these regulations frames much of this program. Further, the Work Program strives to address NYSDOT and FHWA planning emphasis areas which are intended to implement policies for urban area transportation planning. This is to ensure that projects conceived by the SMTC fulfill Federal and State policies, and local issues progress in a timely manner.

Federal Planning Emphasis Areas

In April 2014, FHWA and FTA jointly issued Planning Emphasis Areas (PEAs), which are planning topical areas for State DOTs and MPOs to place emphasis on when developing their work programs. The PEAs for the 2015-2016 UPWP include 1) Models of Regional Planning Cooperation; 2) Ladders of Opportunity: Access to Essential Services; and 3) MAP-21 Implementation.

Models of Regional Planning Cooperation – promote cooperation and coordination across MPO boundaries and across State boundaries where appropriate to ensure a regional approach to transportation planning.

The SMTC is an active participant in the New York State Association of Metropolitan Planning Organizations (NYSAMPO). The NYSAMPO is a coalition of the 14 MPOs throughout New York along with New York State DOT, FHWA and FTA partners. Through this association, several working groups have been established that promote collaborative and comprehensive planning statewide. The working groups facilitate the sharing of best practices from within New York, as well as from other MPOs and state DOTs. The SMTC will continue direct involvement and participation within NYSAMPO and the national Association of Metropolitan Planning Organizations (AMPO). Additionally, staff works collaboratively with the Central New York Regional Planning and Development Board (the SMTC's administrative host) on a number of activities.

Ladders of Opportunity: Access to Essential Services – As part of the transportation planning process, identify transportation connectivity gaps in access to essential services.

Per the joint federal PEA release, essential services include housing, employment, health care, schools/education, and recreation. The area's Coordinated Public Transit – Human Services Transportation Plan (Coordinated Plan) was updated/revised in 2014. The Coordinated Plan identified gaps in the transportation system and recommended several activities and strategies for implementation to reduce these connectivity gaps. As part of the 2015-2016 UPWP, a specific work task focused on identifying accessibility measures such as availability of transit service and travel time to work will be explored. Additional project specific information is contained in the following sections. Accessibility of transit service will also be discussed amongst the NYSAMPO Transit Working Group in the coming year.

MAP-21 Implementation – Transition to Performance Based Planning and Programming.

The SMTC continues to work on the development of the metropolitan area's LRTP. The 2050 LRTP contains a new vision statement, goals, objectives and for the first time performance measures and targets as necessitated by MAP-21. The final version of the 2050 LRTP will be approved by the SMTC Policy Committee in the first half of the 2015-2016 program year. As a Transportation Management Area, an additional requirement within the metropolitan transportation planning process is the development of a Congestion Management report. Like the new LRTP, updated Congestion Management Process (CMP) documentation is also under development. The 2015 CMP relies on a number of performance measures established in the LRTP and also suggests several activities for incorporation in the LRTP moving forward. Following approval of the LRTP, the capital program evaluation and selection process as part of the Transportation Improvement Program will also be modified to account for the new performance based planning initiatives developed in the LRTP.

The status of the current Work Program is reviewed monthly by the SMTC's Executive Committee to ensure that it is being carried out in a manner consistent with the MPO's goals. While it is the mission of the Central Staff and the Executive Committee to complete work efforts within a program year, task elements may be designed to span multiple fiscal years and therefore are carried into subsequent Work Programs to effect closure. Each year an estimate of transportation planning funds available for new programs is made. Policy direction and scope of the UPWP are developed with member agency participation based on their needs, consistent with the LRTP.

The staff, working with member agencies, establishes a list of candidate projects for inclusion in the next year's work program. Estimates of amounts and sources of funding needed to accomplish the planning program are developed. The Planning Committee then prioritizes the continuing program and the new projects. A draft UPWP is developed for Planning Committee review and recommendation of adoption to the Policy Committee. The Policy Committee has the final responsibility to adopt the UPWP.

COUNCIL ORGANIZATION

The Syracuse Metropolitan Transportation Council is organized to facilitate and encourage maximum interaction between local, State and Federal agencies involved in the transportation decision-making process. To accomplish this, a committee structure was adopted to include the following Committees:

Policy Committee

The Policy Committee consists of the elected and appointed officials representing local, State and Federal governments and other organizations/agencies having an interest or responsibility in comprehensive transportation planning in the Syracuse Metropolitan Planning Area. The primary responsibility of the Policy Committee is to establish policies for the overall conduct of the SMTC.

Planning Committee

The Planning Committee, which is established by the Policy Committee, is composed of the professional/technical representatives of both the Policy Committee members and public agencies having direct or indirect responsibility for transportation planning and/or implementation. Their primary responsibility is to monitor all technical activities including the annual development of a draft UPWP and Transportation Improvement Program (TIP) for recommendation to the Policy Committee. They also direct and consider for recommendation to the Policy Committee all major studies and planning activities.

Executive Committee

The Executive Committee is made up of Planning Committee members and provides oversight of the day-to-day operation of the Central Staff for financial management, personnel and other administrative requirements.

Additional Committees

An important element in the operation of the Planning Committee is the effective utilization of both formal and ad-hoc advisory committees to review and evaluate detailed Council issues and results of planning activities. The committees function principally to make recommendations to the Planning Committee on subjects directed to them by the Planning Committee which require extensive evaluation and which would be inefficient to resolve by the full committee itself.

The SMTC typically develops a project specific Study Advisory Committee (SAC) for each of its planning activities.

The SMTC also has a permanent Capital Projects Committee. The Capital Projects Committee is responsible for making recommendations to the full Planning Committee regarding project priorities to be funded by various Federal Aid Transportation Programs and included in the TIP.

Non-Voting Membership

The SMTC maintains a non-voting membership category to accommodate agencies that have programs indirectly related to transportation and/or transportation planning. With the exception of voting on official Council business, these members are eligible to participate in Committee discussions and to receive all SMTC correspondence.

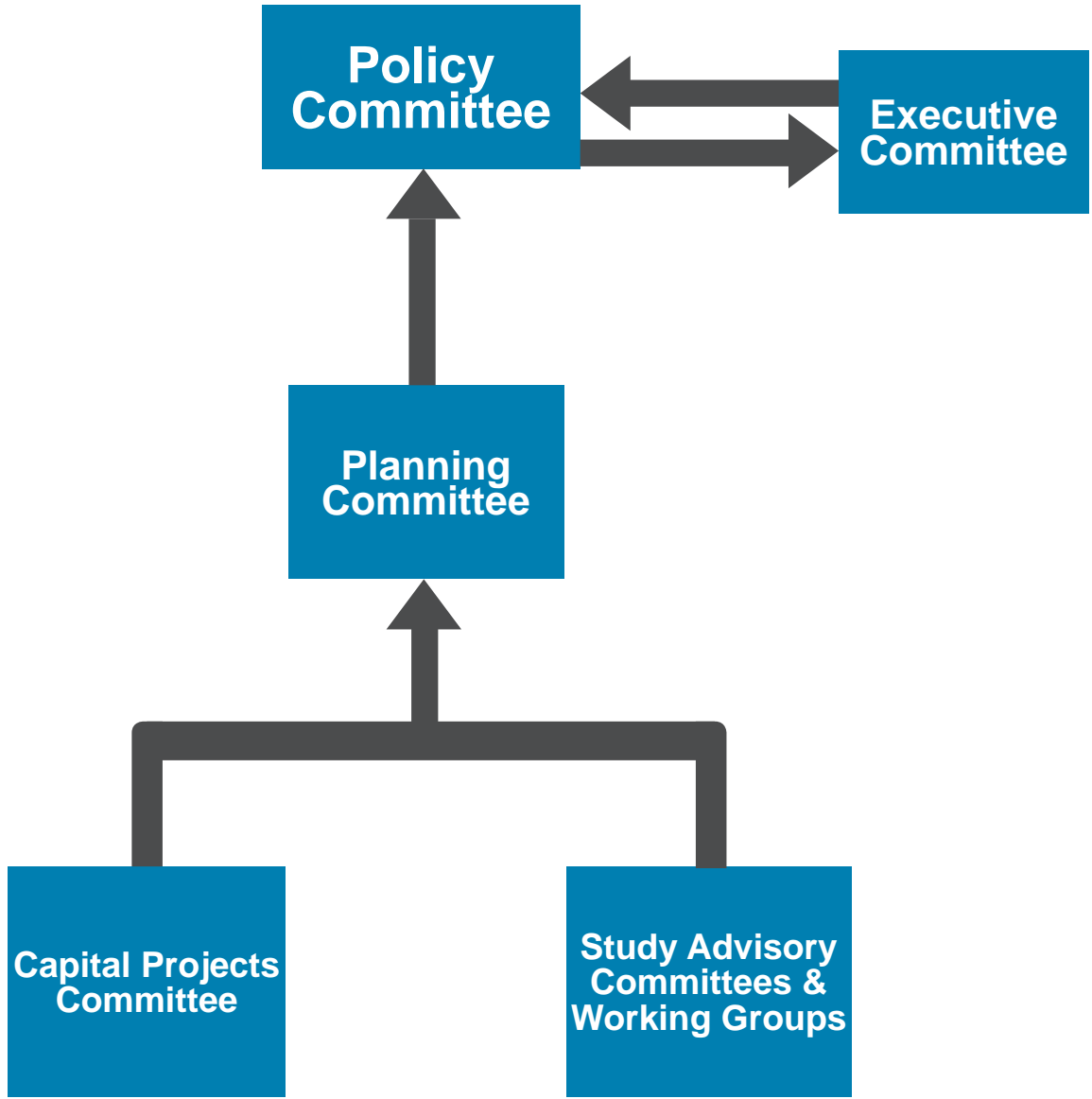
Organizational Objectives

In order to achieve the SMTC program goals and the detailed technical activities inherent in them, the SMTC organization has the following objectives:

1. Develop an administrative committee structure which will express and coordinate transportation planning and development values, policies, and goals as related to transportation requirements at all governmental levels;
2. Provide guidance to public and private decision-makers involved in immediate implementation and long-range activities;
3. Provide technical study programs and fulfill organizational responsibilities necessary to continue transportation plan development, study refinement, and research;
4. Provide for community review of the Long Range Transportation Plan and its sub-elements, resolve conflicts with community values, and obtain participation in updating and reevaluating the plan;
5. Monitor and evaluate changes in the metropolitan structure and identify growth problems, and update the plan as necessary; and
6. Promote the coordination of planning activities to implement the “continuing, comprehensive, cooperative planning” concept.

SMTC COMMITTEE STRUCTURE

Committee Structure



SMTC Staff carries out the work program under the direction of the Policy Committee.

SMTC STAFFING

The work proposed under this UPWP will be accomplished primarily by the SMTC Central Staff, with the assistance and cooperative support of participating agencies (e.g., Central New York Regional Planning and Development Board (CNY RPDB), Central New York Regional Transportation Authority (CNYRTA), City of Syracuse, NYSDOT, Onondaga County, and the Syracuse-Onondaga County Planning Agency (SOCPA)) as well as the use of private consultants, where appropriate.

SMTC Central Staff

A permanent, multi-disciplinary professional staff has been assembled to carry out the major portion of the SMTC continuing transportation planning program. This staff, consisting of a Director, professional, technical and support personnel, will pursue specific SMTC work program task elements under the direction of the Executive Committee.

Onondaga County acts as the Host agency for the Central Staff operation and contracts with the CNY RPDB to administer the program. As part of the host's responsibility, an annual audit of the SMTC financial records is completed, as required by Federal regulations. The CNY RPDB also contributes technical support to the SMTC as needed.

Member Agencies

On occasion, and as recommended by the Central Staff Director, as identified in the UPWP, member agency staff may coordinate work activities with the SMTC Central staff.

OPERATIONAL PROCEDURES AND BYLAWS

The SMTC operates under an adopted set of bylaws. Administrative and operational procedures are included in the SMTC Operations Plan and in the operational policies of the CNY RPDB.

Official records of SMTC business are maintained in the SMTC Administrative Offices located at 100 Clinton Square, 126 North Salina Street, Suite 100, Syracuse, NY 13202. All of the SMTC records are available for public inspection during normal business hours.

TITLE VI POLICY

The SMTC is committed to ensuring that no person is excluded from participation in, or denied the benefits of, its metropolitan transportation planning process on the basis of race, color, national origin, sex, age, disability, low income or Limited English Proficiency status as protected by Title VI of the Civil Rights Act of 1964 and related statutes and regulations.

UNIFIED PLANNING WORK PROGRAM (UPWP) FRAMEWORK

The Unified Planning Work Program establishes the transportation planning activities and programs of the Metropolitan Planning Organization (MPO) to be carried out over the course of the work program year(s) (April through March). Other than administration, the basis of the work program is focused in three broad areas:

- I. Maintenance of a Transportation Improvement Program, which identifies projects and/or programs to receive various sources of Federal funds covering highway, transit, and intermodal facilities and programs.
- II. Maintenance and implementation of the Long Range Transportation Plan, which identifies priority transportation system deficiencies and feasible/appropriate methods for addressing those deficiencies in a fiscally constrained environment.

Six transportation goals were identified for the Syracuse Metropolitan Planning Area in the SMTC 2020 Long Range Transportation Plan adopted in January 1995, updated in 1998, 2001, 2004, 2007, and 2011, including: mobility, safety, environment, economy, land use and facilities. Detailed objectives and action recommendations were also identified in regard to each of the goal areas.

- III. Recognition of requirements established by USDOT regarding the national transportation planning priorities included in MAP-21. The eight planning factor requirements of MAP-21 are listed below.
 1. Support the economic vitality of the metropolitan area, especially by enabling global competitiveness, productivity and efficiency;
 2. Increase the safety of the transportation system for motorized and non-motorized users;
 3. Increase the security of the transportation system for motorized and non-motorized users;
 4. Increase the accessibility and mobility of people and for freight;
 5. Protect and enhance the environment, promote energy conservation, improve quality of life and promote consistency between transportation improvements and State and local planned growth and economic development patterns;
 6. Enhance the integration and connectivity of the transportation system, across and between modes, for people and freight;
 7. Promote efficient system management and operation; and
 8. Emphasize the preservation of the existing transportation system.

In addition to the eight planning factors, MAP-21 also contains the following national goals. Performance measures will be developed by USDOT to advance these goals. The SMTC will continue to work with its state and Federal partners to ensure all plans, projects and activities of the MPO are carried out in compliance with federal transportation authorizations.

1. Safety: Achieve reduction in fatalities and serious injuries on all public roads.
2. Infrastructure condition: Maintain highway infrastructure assets in state of good repair.
3. Congestion reduction: Achieve reduction in congestion on the National Highway System.
4. System reliability: Improve the efficiency of the surface transportation system.
5. Freight movement and economic viability: Improve the national freight network, strengthen the ability of rural communities to access national and international trade markets, and support regional economic development.
6. Environmental sustainability: Enhance the performance of the transportation system while protecting and enhancing the natural environment.
7. Reduced project delivery delays: Reduce project costs, promote jobs and the economy, and expedite the movement of people and goods by accelerating project completion.

2014-2015 UPWP ACCOMPLISHMENTS

1. Completed a number of multi-modal or technical analysis projects – Downtown Syracuse Two-Way Feasibility Technical Analysis, OCDOT Signal Optimization Phase 3, Onondaga County Sustainable Streets Initiative Phase 1, City of Syracuse Wayfinding Study Phase 2, Town of Lysander Comprehensive Plan Update Assistance, and Title VI & LEP Plan.
2. Continued and/or initiated projects – Butternut Street Corridor Study, ITS Strategic Plan Update, Erie Canalway Trail, Onondaga County Sustainable Streets Initiative Phase 2 (Western Lights Pedestrian Access Study), Church Street Realignment, Erie Boulevard East Pedestrian Accommodation Study, Bicycle and Pedestrian Safety Outreach, Roundabout Feasibility Analysis, and Complete Streets Technical Analysis.
3. Completed a number of turning movement counts in support of various UPWP activities.
4. Continued development of the area's new Long Range Transportation Plan.
5. Continued involvement with the NYSDOT I-81 Viaduct Project, particularly with the travel demand modeling efforts where refinements/updates to the model took place throughout the program year.
6. Developed a scope of work and commenced a consultant procurement process for the area's transit enhancement examination (i.e., Syracuse Metropolitan Area Regional Transit Study Phase 1).
7. Created a transit system map of Onondaga County and the City of Syracuse.
8. Attended Central New York Regional Transportation Authority Board meetings.
9. Provided mapping, travel demand modeling and other technical assistance to member agencies and municipalities.
10. Held Synchro/HSC introductory and intermediate training sessions for member agency and SMTC personnel.
11. Continued maintenance of the 2014-2018 Transportation Improvement Program.
12. Held several meetings throughout the year with the SMTC Capital Projects Committee.
13. Began updating the Congestion Management Process documentation.
14. Assisted in the development of the Central New York Regional Economic Development Council 2014-2015 Strategic Plan Update.
15. Created a variety of ArcGIS On-Line maps that are available on the SMTC web site.
16. Continued participation on the Onondaga County Traffic Safety Advisory Board and the Accessible Transportation Advisory Council.
17. Distributed two issues of the SMTC newsletter, DIRECTIONS, to over 5,000 people/agencies via direct mailing and e-mail.

SUMMARY OF MAJOR PROGRAMMED ACTIVITIES

The 2015-2016 SMTC UPWP is based on the SMTC's 2020 Long Range Transportation Plan and its corresponding updates, which have been approved by the Policy Committee. Emphasis has been placed on developing a program which can be reasonably accomplished with available staff and consultant resources and which is in keeping with the priorities of the SMTC area.

The Safe, Accountable, Flexible, Efficient Transportation Equity Act: A Legacy for Users (SAFETEA-LU), MAP-21 and other Federal legislation (1990 Clean Air Act Amendments and Americans With Disabilities Act of 1990) significantly impact the manner in which the cooperative, continuous and comprehensive transportation planning process is administered. Among the opportunities are funding flexibility, intermodal planning, protection of the environment and the maintenance and preservation of existing transportation infrastructure. As MAP-21 was signed into law in July 2012 and extended through May 2015, a final rulemaking is necessary before various rules/regulations of the metropolitan transportation planning processes become effective. The final rulemaking should be released during the 2015-2016 program. However, the MAP-21 performance based, out-come driven approach to metropolitan transportation planning is being followed in the development of the new Long Range Transportation Plan and Congestion Management Process report.

Tasks within this Work Program are organized into several major categories to facilitate review and management as follows:

- 1. Program Administration and Support**

This category includes general administration, UPWP maintenance and development and public participation. In addition, funding is included for the staff to become educated on federal legislation and requirements.

- 2. Short Range Transportation Planning**

This category includes projects which could be implemented in a shorter timeframe and includes activities related to the Census data, transit and vehicle data collection and Geographic Information Systems (GIS) activities.

- 3. Long Range Transportation Planning**

The majority of UPWP projects that fall under this category are either annual activities or projects that tend to take longer to complete.

- 4. Transportation Improvement Program (TIP)**

This category includes various tasks associated with the administration and maintenance of the TIP, which identifies projects and programs to receive various sources of Federal funds covering air quality, highway, transit, and intermodal facilities and programs.

- 5. Other Activities**

This category includes miscellaneous activities and special technical assistance not otherwise covered.

New York State Metropolitan Planning Organizations

SHARED COST INITIATIVES

In addition to the projects included in the SMTC's program, staff participates with other New York State Metropolitan Planning Organizations on several Shared Cost Initiative (SCI) projects. The SMTC's federal allocation accounted for in the budget tables does not include the set-aside for these SCI projects, as the allocation was previously adjusted proportionally by the New York State Department of Transportation (NYSDOT). In addition, the SMTC's FHWA allocation has also been adjusted to account for the annual Association of Metropolitan Planning Organization's dues. Also, it should be noted that the SCI funding includes NYSDOT Statewide Planning and Research (SPR) funding for SCI Working Groups as listed in the attached table. The SCI projects are outlined below for 2015-2016. The SMTC fully supports and participates in the SCI program statewide.

As part of the UPWP development each year, the various MPOs in New York State (NYSAMPO) collectively reserve a limited amount of federal transportation planning funds to fund a series of statewide shared cost initiatives and pay annual dues to the Association of Metropolitan Planning Organizations (AMPO). As available, the NYSDOT has made FHWA SPR funds available to NYSAMPO to supplement SCIs funded with FHWA PL and FTA MPP funds.

NYSAMPO Staff Support

Objective: Provide administrative and technical support for NYSAMPO efforts, including working groups.

Cost: \$250,000 (\$150,000 FHWA PL and FTA MPP and \$100,000 NYSDOT SPR)

Lead Agency: Capital District Transportation Committee

NYSAMPO Staff Training

Objective: Provide relevant training and professional development opportunities for the staffs and member agencies of MPOs.

Cost: \$33,500 FHWA PL/\$8,375 NYSDOT Match (toll credits)

\$17,971 FTA MPP / \$4,493 NYSDOT Match (IKS)

Lead Agency: Genesee Transportation Council

AMPO Dues

Objective: Ensure that MPOs are aware of and considered in the development of national transportation policy.

Cost: \$40,487 (FHWA PL)

Lead Agency: Binghamton Metropolitan Transportation Study

2015-2016 UPWP PROGRAM OUTLINE

THIS TABLE IS FOR INFORMATIONAL PURPOSES ONLY. THE INDICATED BREAKDOWN OF ESTIMATED STAFF/CONTRACTUAL ASSIGNMENTS AND BUDGETS ARE SUBJECT TO MODIFICATION AS NEEDED.

ID	Category	2015-2016			Notes
		Project Total	Staff & Operating Expense Budget	Contractual Budget	
1.	Program Administration and Support (44.21.00)				
A.	General Administration	\$280,000	\$200,000	\$80,000	Contractual for Host Agency Agreement
B.	Public Participation	\$30,000	\$30,000	\$0	
C.	Federal Transportation Legislation Examination and Evaluation	\$10,000	\$10,000	\$0	For legislative compliance
D.	UPWP Previous Year Closeouts	\$20,000	\$20,000	\$0	
E.	UPWP Maintenance and Development	\$15,000	\$15,000	\$0	
	Total Program Administration & Support	\$355,000	\$275,000	\$80,000	
2.	Short-Range Transportation Planning (44.24.00)				
A.	Census Data Compilation and/or Analysis	\$10,000	\$10,000	\$0	
B.	Data Collection, Compilation and/or Analysis	\$30,000	\$15,000	\$15,000	
C.	Functional Classification System Review	\$10,000	\$10,000	\$0	
D.	Geographic Information Systems - SMTC	\$45,000	\$45,000	\$0	
E.	Geographic Information Systems - Member Agency Assistance	\$25,000	\$25,000	\$0	Purpose is to provide GIS services to Member Agencies related to regional planning
	Total Short-Range Transportation Planning	\$120,000	\$105,000	\$15,000	
3.	Long-Range Transportation Planning (44.23.02)				
A.	Air Quality and Energy	\$10,000	\$10,000	\$0	
B.	Bicycle/Pedestrian Planning	\$25,000	\$25,000		
C.	Bridge and Pavement Condition Management System (BPCMS)	\$10,000	\$10,000	\$0	
D.	I-81 NEPA Involvement	\$25,000	\$25,000	\$0	Plus consultant expenses incurred under SPR (see associated table) SPR Total for Year 2015 - 2016 is \$100,000
E.	I-81 Travel Demand Modeling Project	\$65,000	\$50,000	\$15,000	
F.	MPO Area Regional Planning Initiatives	\$20,000	\$20,000	\$0	
G.	Long-Range Transportation Plan	\$70,000	\$70,000	\$0	
H.	Rail, Truck and Transit Planning	\$30,000	\$30,000	\$0	
I.	Traffic Safety	\$15,000	\$15,000	\$0	
J.	Travel Demand Modeling	\$55,000	\$30,000	\$25,000	Contractual for Modeling Assistance as necessary for staff assistance
K.	Congestion Management Process (CMP)	\$20,000	\$20,000		
L.	Onondaga County Sustainable Streets Initiative	\$25,000	\$25,000	\$0	
M.	Synchro/HCS Training	\$15,000	\$5,000	\$10,000	
N.	ITS Strategic Plan Update	\$10,000	\$10,000	\$0	
O.	Syracuse Metropolitan Area Regional Transit Study Ph. 1	\$55,000	\$30,000	\$25,000	Plus consultant expenses incurred under SPR (see associated table) SPR Total for Year 2015 - 2016 is \$150,000
P.	Church Street Realignment	\$15,000	\$15,000	\$0	
Q.	Erie Boulevard East Pedestrian Study	\$45,000	\$45,000	\$0	Total Multi-Year Cost Estimated at approximately \$150,000
R.	Bicycle & Pedestrian Safety Outreach	\$45,000	\$30,000	\$15,000	
S.	Title VI Adherence	\$10,000	\$10,000	\$0	
T.	Ladders of Opportunity – Access to Essential Services	\$10,000	\$10,000		
U.	Roundabout Feasibility Analysis	\$25,137	\$5,000	\$20,137	
V.	Complete Streets Technical Analysis	\$15,000	\$15,000	\$0	
W.	Bridge Prioritization Assessment	\$10,000	\$10,000	\$0	
	Total Long-Range Transportation Planning	\$625,137	\$515,000	\$110,137	
4.	Transportation Improvement Program (TIP) (44.25.00)				
A.	TIP Development & Maintenance	\$60,000	\$60,000	\$0	
	Total Transportation Improvement Program	\$60,000	\$60,000	\$0	
5.	Other Activities (44.27.00)				
A.	Miscellaneous Activities and Special Technical Assistance	\$45,997	\$45,997	\$0	
	Total Other Activities	\$45,997	\$45,997	\$0	
	Grand Total Traditional Funding	\$1,206,134	\$1,000,997	\$205,137	

SPR Expenses for I-81 EIS/NEPA Modeling	\$100,000
SPR Expenses for SMART1 Study	\$150,000
Total SMTC Program Cost	\$1,456,134

Please note: Where contractual dollars are indicated no FTA monies are involved in contracts unless specified

Allocations / Resources: All fund sources except in-kind services.	
FHWA	\$991,112
FTA	\$215,022
SPR Monies from NYSDOT	\$250,000
Carry Over Funds	\$0
Total Resources Available	\$1,456,134

UNIFIED PLANNING WORK PROGRAM

FY 2015-2016

1. **PROGRAM ADMINISTRATION and SUPPORT (44.21.00)**

- 1A. General Administration
- 1B. Public Participation
- 1C. Federal Transportation Legislation Examination & Evaluation
- 1D. UPWP Previous Year Closeouts
- 1E. UPWP Maintenance and Development

PROJECT NO:	1A										
PROJECT TITLE:	General Administration										
<p>OBJECTIVE: To initiate and properly manage the transportation planning process, ensuring that it is continuous, cooperative, and comprehensive, and in compliance with applicable State and Federal laws and regulations.</p>											
<p>METHODOLOGY:</p> <p>The SMTC provides staff support to the Policy, Executive, and Planning Committees, in addition to other permanent and ad-hoc committees. The Staff will implement the work tasks as contained in this UPWP. Other administrative activities include, but are not limited to the following:</p> <ul style="list-style-type: none"> ▪ Act as local liaison to NYSDOT, CNYRTA, CNY RPDB, and other transportation related agencies to ensure coordination; ▪ Provide administrative support and technical assistance to the Policy, Executive, and Planning Committees, as well as other permanent and ad-hoc committees, as needed; ▪ Maintain financial records of all revenues and expenditures; ▪ Prepare and distribute meeting notices and agenda packages for all SMTC committees; ▪ Prepare certification documentation, agreements, resolutions, memoranda of understanding (MOUs), etc.; ▪ Attend NYSDOT, FHWA, FTA, and MPO training sessions and other necessary workshops and meetings as appropriate; ▪ Maintain agreements between local governmental agencies and the MPO; ▪ Prepare and distribute quarterly and semi-annual progress reports and other documents as required; ▪ Interact/participate in NYS AMPO, ITE, APA, and other professional affiliations, and allow for appropriate resources, travel and training as necessary; ▪ Provide funds for the purchase and maintenance of computer hardware and software to support the MPO planning program and related activities, including network maintenance; ▪ Continue the SMTC’s commitment to comply with Title VI of the Civil Rights Act of 1964; ▪ Continue the SMTC’s commitment to ensure that all of their programs and activities sufficiently address Environmental Justice principles and procedures, as appropriate; and ▪ Continue to comply with the NYSDOT’s Disadvantaged Business Enterprise Program. 											
<p>END PRODUCT:</p> <p>The ability to operate the agency as a functional entity; the ability to meet federal and state requirements; the ability to meet local government expectations; Committee Documentation – including: reports, meeting minutes, committee mailings, and related materials; staff involvement in relevant organizations and activities; and adequate computer resources to meet the MPO planning activity requirements.</p>											
<table border="1" style="width: 100%; border-collapse: collapse;"> <thead> <tr> <th style="width: 60%; text-align: center;">Requesting / Participating Agencies:</th> <th style="width: 40%; text-align: center;">Funding Sources:</th> </tr> </thead> <tbody> <tr> <td style="vertical-align: top;"> <p>On Behalf Of: SMTC</p> <p>Participating Agencies: SMTC, CNY RPDB, Other Agencies as Appropriate</p> </td> <td style="text-align: center; vertical-align: top;"> <p><u>2015-2016</u></p> <table style="width: 100%; border-collapse: collapse;"> <tr> <td style="width: 60%;">FHWA ^(PL)</td> <td style="width: 40%; text-align: right;">\$ 210,000</td> </tr> <tr> <td>FTA ^(Sec. 5303)</td> <td style="text-align: right;">\$ 70,000</td> </tr> <tr> <td style="border-top: 1px solid black;">TOTAL</td> <td style="text-align: right; border-top: 1px solid black;">\$ 280,000</td> </tr> </table> </td> </tr> </tbody> </table>		Requesting / Participating Agencies:	Funding Sources:	<p>On Behalf Of: SMTC</p> <p>Participating Agencies: SMTC, CNY RPDB, Other Agencies as Appropriate</p>	<p><u>2015-2016</u></p> <table style="width: 100%; border-collapse: collapse;"> <tr> <td style="width: 60%;">FHWA ^(PL)</td> <td style="width: 40%; text-align: right;">\$ 210,000</td> </tr> <tr> <td>FTA ^(Sec. 5303)</td> <td style="text-align: right;">\$ 70,000</td> </tr> <tr> <td style="border-top: 1px solid black;">TOTAL</td> <td style="text-align: right; border-top: 1px solid black;">\$ 280,000</td> </tr> </table>	FHWA ^(PL)	\$ 210,000	FTA ^(Sec. 5303)	\$ 70,000	TOTAL	\$ 280,000
Requesting / Participating Agencies:	Funding Sources:										
<p>On Behalf Of: SMTC</p> <p>Participating Agencies: SMTC, CNY RPDB, Other Agencies as Appropriate</p>	<p><u>2015-2016</u></p> <table style="width: 100%; border-collapse: collapse;"> <tr> <td style="width: 60%;">FHWA ^(PL)</td> <td style="width: 40%; text-align: right;">\$ 210,000</td> </tr> <tr> <td>FTA ^(Sec. 5303)</td> <td style="text-align: right;">\$ 70,000</td> </tr> <tr> <td style="border-top: 1px solid black;">TOTAL</td> <td style="text-align: right; border-top: 1px solid black;">\$ 280,000</td> </tr> </table>	FHWA ^(PL)	\$ 210,000	FTA ^(Sec. 5303)	\$ 70,000	TOTAL	\$ 280,000				
FHWA ^(PL)	\$ 210,000										
FTA ^(Sec. 5303)	\$ 70,000										
TOTAL	\$ 280,000										

UPWP TASK NO:	1B
TASK TITLE:	Public Participation
OBJECTIVE: To enhance the SMTC’s transportation planning process with greater opportunities for public participation, input, involvement, and exposure.	
<p>METHODOLOGY:</p> <p>This task generally provides for the dissemination of information to the public about the transportation planning program. It also covers receiving public comment and input on transportation planning activities through public information meetings both hosted and attended by the SMTC.</p> <p>Specifically, this task includes an update to the agency’s Public Participation Plan to improve the public’s access to the MPO planning process, including all stages of the development of MPO planning documents and studies.</p> <p>As part of this task, the SMTC will continue to ensure that the principles of Environmental Justice and Title VI, are included and represented in all public outreach efforts.</p> <p>The techniques for the dissemination of information include, but are not limited to the following:</p> <ul style="list-style-type: none"> ▪ Newsletters; ▪ Brochures and flyers; ▪ Study reports and technical memoranda; ▪ Public information meetings/workshops and conferences; ▪ Media releases, press articles, and paid advertisements/features; ▪ Direct contact with public/citizens mailing lists; ▪ Transportation “fairs”, exhibits or expositions; and ▪ SMTC web site (www.smtcmopo.org). <p>Public participation opportunities (public input) include:</p> <ul style="list-style-type: none"> ▪ Public meetings/workshops; ▪ Task Forces, Focus Groups; ▪ Study Advisory Committees and Stakeholders database; and ▪ Surveys, questionnaires, comment cards, etc. 	
<p>END PRODUCT:</p> <p>Public Participation Plan and other public participation opportunities/activities, including SMTC newsletters, reports, press releases, maps, and slide presentations, web site maintenance, meetings, workshops, etc.</p>	
Requesting / Participating Agencies:	
Funding Sources:	
On Behalf Of: SMTC	<u>2015-2016</u>
Participating Agencies: SMTC, SMTC Member Agencies, Other Agencies as Appropriate	FHWA ^(PL) \$ 22,500
	FTA ^(Sec. 5303) \$ 7,500
	TOTAL \$ <u>30,000</u>

UPWP TASK NO:	1C	
TASK TITLE:	Federal Transportation Legislation Examination & Evaluation	
OBJECTIVE:	To provide funds to allow the Central Staff to comply with existing and new Federal Legislation and to educate themselves on the changing regulations and requirements.	
METHODOLOGY:	<p>With the passage of the Moving Ahead for Progress in the 21st Century (MAP-21) transportation authorization in July 2012, policies and other regulations are continuing to be released by the USDOT. With the passage of the transportation authorization there are specific regulations and requirements for Metropolitan Transportation Planning. The Federal Highway Administration, the Federal Transit Administration and the New York State Department of Transportation, as well as many other professional organizations, will assist Metropolitan Planning Organizations in interpreting and implementing the new regulations. Compliance with previous legislation is still required as well. This is a necessary compliance item.</p>	
END PRODUCT:	Improved knowledge of the Central Staff regarding the regulations and requirements of the new Transportation Bill as well as required continued compliance of existing legislation.	
Requesting / Participating Agencies:		Funding Sources:
On Behalf Of: SMTC		<u>2015-2016</u>
Participating Agencies: SMTC, SMTC Member Agencies, Other Agencies as Appropriate		FHWA ^(PL) \$ 5,000
		FTA ^(Sec. 5303) \$ 5,000
		TOTAL \$ <u>10,000</u>

UPWP TASK NO:	1D
TASK TITLE:	UPWP Previous Year Closeouts
OBJECTIVE: To provide a task for closing out various UPWP activities from the previous program year.	
<p>METHODOLOGY:</p> <p>At the end of each program year, there are often various administrative tasks that need to be completed in order to officially close out a project. Such activities typically include the reproduction and distribution of Final Reports that were acknowledged prior to the close of the program year. Since there are no planning activities remaining, the project is not carried over and therefore does not possess a billing code to charge these final administrative tasks.</p> <p>This task is included as a “catch-all” to cover the various tasks necessary to completely close out various projects from the previous program year.</p>	
<p>END PRODUCT:</p> <p>Completion of required tasks necessary to completely close out various projects/efforts from the previous program year.</p>	
Requesting / Participating Agencies:	
Funding Sources:	
On Behalf Of: SMTC	<u>2015-2016</u>
Participating Agencies: SMTC, CNY RPDB	FHWA ^(PL) \$ 20,000
	FTA ^(Sec. 5303) \$ 0
	TOTAL \$ <u>20,000</u>

UPWP TASK NO:	1E
TASK TITLE:	UPWP Maintenance and Development
OBJECTIVE: Maintain the 2015-2016 Unified Planning Work Program (UPWP) as necessary and develop a subsequent work program accordingly.	
<p>METHODOLOGY:</p> <p>This task includes all necessary work required to process amendments to the 2015-2016 UPWP and finalize according to Federal regulations.</p> <p>The UPWP indicates local, state, and federal funding of the UPWP work tasks and identifies the participating agencies for completing the work. The UPWP will be developed according to measures deemed necessary to ensure a “3C” planning process, one that is continuing, cooperative, and comprehensive.</p>	
<p>END PRODUCT:</p> <p>Maintenance of and amendments to the 2015-2016 UPWP as appropriate as well as development of the 2016 - 2017 UPWP.</p>	
Requesting / Participating Agencies:	
On Behalf Of: SMTC	Funding Sources:
Participating Agencies: SMTC, SMTC Member Agencies, Other Agencies as Appropriate	<u>2015-2016</u>
	FHWA ^(PL) \$ 12,000
	FTA ^(Sec. 5303) \$ 3,000
	TOTAL \$ <u>15,000</u>

UNIFIED PLANNING WORK PROGRAM

FY 2015-2016

2. SHORT RANGE TRANSPORTATION PLANNING (44.24.00)

- 2A. Census Data Compilation, and/or Analysis
- 2B. Data Collection, Compilation, and/or Analysis
- 2C. Functional Classification System Review
- 2D. Geographic Information Systems (GIS) -SMTC
- 2E. Geographic Information Systems (GIS) - Member Agency Assistance

UPWP TASK NO:	2A	
TASK TITLE:	Census Data Compilation and/or Analysis	
OBJECTIVE:	To continue to utilize the U.S. Census data accordingly. Additionally, to provide Census data, information and analysis as input into appropriate SMTC planning studies. This effort supports Long Range Transportation Planning activities, Travel Demand Modeling, Environmental Justice, Title VI, and general transportation planning for the MPO.	
METHODOLOGY:	<p>This UPWP task is an ongoing activity of the SMTC. It allows for staff to utilize various Census data for Long Range Transportation Planning activities, Travel Demand Modeling, Environmental Justice, and general transportation planning completed by the MPO. Additionally, member agencies frequently request that the SMTC create customized census data products for their needs. This project allows for SMTC staff to complete those requests.</p>	
END PRODUCT:	A valuable data set to support the varied planning activities of the MPO.	
Requesting / Participating Agencies:		
Funding Sources:		
On Behalf Of: SMTC	<u>2015-2016</u>	
	FHWA ^(PL)	\$ 7,500
Participating Agencies: SMTC, Other Agencies as Appropriate	FTA ^(Sec. 5303)	\$ 2,500
	TOTAL	\$ <u>10,000</u>

UPWP TASK NO:	2B
TASK TITLE:	Data Collection, Compilation, and/or Analysis
OBJECTIVE: To collect, analyze and utilize various forms of data that assist in the everyday planning operation of the MPO.	
METHODOLOGY: This UPWP task involves the following subcategories:	
<ul style="list-style-type: none"> i. Transit Data Collection: The collection of transit ridership, scheduling and routing information by both the Central New York Regional Transportation Authority (CNYRTA) and by the SMTC to fill project-specific data needs. It is intended that the CNYRTA will collect this data and provide it to the SMTC in a timely manner. If the CNYRTA is unable to provide the SMTC with the requested data, the SMTC will utilize the funds available for this category to obtain the data elsewhere. The SMTC will provide CNYRTA with project-specific data needs as requested. ii. Vehicle Data Collection: The collection of traffic count data and turning movement count data required in support of the SMTC’s planning activities. This will be done in accordance with the adopted Traffic Count Protocol procedures at the SMTC. Additionally, this subcategory will include the ongoing effort of maintaining a central database of vehicle traffic counts for the MPO area. iii. Other Information: Other data as necessary in support of the planning activities of the SMTC. 	
Note: No FTA monies will be used for the contractual portion of this project.	
END PRODUCT: The end product is transit, vehicular and other data sets as necessary. These data are used in the various multi-modal studies and activities undertaken by the SMTC.	
Requesting / Participating Agencies:	Funding Sources:
On Behalf Of: SMTC	<u>2015-2016</u>
Participating Agencies: SMTC, SMTC Member Agencies, Other Agencies as Appropriate	FHWA ^(PL) \$ 30,000
	FTA ^(Sec. 5303) \$ 0
	TOTAL \$ <u>30,000</u>

UPWP TASK NO:	2C	
TASK TITLE:	Functional Classification System Review	
OBJECTIVE:	To conduct a review, and make changes of the MPO functional classification system following adjustment of the 2010 Census urbanized area and Metropolitan Planning Area.	
METHODOLOGY:	<p>Initiated during the 2014-2015 program year, the SMTC will complete the Functional Classification of Streets revisions identified as a result of both the 2010 Census and the suggested revision of the City of Syracuse Functional Classification System in previous years.</p> <p>Changes outside of the City may be necessary for a variety of reasons including continuity and functionality. This process will be led by the SMTC staff, however it will involve extensive input from appropriate entities and member agencies including, but not limited to the City of Syracuse, the New York State Department of Transportation, and the Onondaga County Department of Transportation.</p>	
END PRODUCT:	A revised functional classification system for the entire MPO area.	
Requesting / Participating Agencies:		Funding Sources:
On Behalf Of: SMTC		<u>2015-2016</u>
Participating Agencies: SMTC, SMTC Member Agencies		FHWA ^(PL) \$ 10,000
		FTA ^(Sec. 5303) \$ 0
		TOTAL \$ <u>10,000</u>

UPWP TASK NO:	2D
TASK TITLE:	Geographic Information Systems (GIS) - SMTC
OBJECTIVE: To manage the data and software requirements necessary for maintaining and using the SMTC's Geographic Information System (GIS) to support the MPO planning activities.	
METHODOLOGY:	
<p>The SMTC utilizes various transportation-related GIS files as part of routine planning and analysis. As additional information becomes available digitally from the SMTC's member agencies each year, the role of GIS is becoming pervasive.</p> <p>To fully allow the SMTC to utilize GIS in its work program, there are necessary enhancements and routine maintenance efforts that must be undertaken as part of its work program annually. These efforts will allow the SMTC to more fully utilize GIS in relation to vehicle traffic counts, transit ridership, pavement condition monitoring, functional classification, demographic analysis, linking of Travel Demand Model data to GIS data, and other related efforts.</p> <p>Anticipated activities include:</p> <ul style="list-style-type: none"> ▪ Coordination with member agencies to ensure that the most recent data is being used; ▪ File maintenance of the SMTC's GIS data layers; ▪ Linking Census data with relevant SMTC GIS layers; ▪ Continuing linking Vehicle Data Collection activities with the GIS database to allow for easy access to the most up-to-date traffic counts for road segments (AADT); ▪ Continue development of a GIS layer of turning movement count locations and data sheets to allow for easy access to turning movement count data sets; ▪ GIS data acquisition, maintenance, and manipulation as required in support of the various UPWP planning efforts that will utilize GIS data; and ▪ Participation on the NYSAMPO GIS Working Group. 	
END PRODUCT:	
Enhanced coordination between the SMTC and various Federal, State, and local agencies to allow for up-to-date GIS data and files. Additionally, enhanced data sets that support the SMTC's planning efforts and high quality cartographic products as required for various UPWP projects.	
Requesting / Participating Agencies:	
Funding Sources:	
On Behalf Of: SMTC	<u>2015-2016</u>
Participating Agencies: SMTC, SMTC Member Agencies	FHWA ^(PL) \$ 33,750
	FTA ^(Sec. 5303) \$ 11,250
	TOTAL \$ <u>45,000</u>

UPWP TASK NO:	2E
TASK TITLE:	Geographic Information Systems (GIS) - Member Agency Assistance
<p>OBJECTIVE: To manage the data and software requirements necessary for maintaining and using the SMTC's Geographic Information System (GIS) to support the regional planning needs of the MPO member agencies as they relate to the mission of the SMTC.</p>	
<p>METHODOLOGY:</p> <p>As outlined in project 2D Geographic Information Systems (GIS) - SMTC, the SMTC's staff is highly capable of using and maintaining GIS data and creating appropriate end products. This item's purpose is to provide those services to SMTC member agencies as they relate to regional planning and the core mission of the SMTC.</p> <p>Anticipated activities include:</p> <ul style="list-style-type: none"> ▪ Maintenance of appropriate data libraries; ▪ Creation of custom data sets; ▪ Map creation and editing; ▪ Maintenance of appropriate data libraries; and ▪ GIS data acquisition, maintenance, and manipulation as required in support of the various planning efforts that will utilize GIS data. <p>This GIS support project involves Central Staff providing member agencies with GIS products such as maps and associated spreadsheets on an as needed basis. The GIS maps would be produced for the member agency by request and reviewed by requesting agency.</p>	
<p>END PRODUCT:</p> <p>Enhanced coordination between the SMTC and various Federal, State, and local agencies to allow for up-to-date GIS data and files. Additionally, enhanced data sets that support the member agencies' planning efforts and high quality cartographic products as required for various regional planning projects in support of the SMTC's mission.</p>	
Requesting / Participating Agencies:	Funding Sources:
On Behalf Of: CNYRPDB	<u>2015-2016</u>
Participating Agencies: SMTC, SMTC Member Agencies	FHWA ^(PL) \$ 18,750
	FTA ^(Sec. 5303) \$ 6,250
	TOTAL \$ <u>25,000</u>

UNIFIED PLANNING WORK PROGRAM

FY 2015-2016

3. LONG RANGE TRANSPORTATION PLANNING (44.23.02)

- 3A. Air Quality and Energy
- 3B. Bicycle/Pedestrian Planning
- 3C. Bridge and Pavement Condition Management System (BPCMS)
- 3D. I-81 NEPA Involvement
- 3E. I-81 Travel Demand Modeling Project
- 3F. MPO Area Regional Planning Initiatives
- 3G. Long Range Transportation Plan
- 3H. Rail, Truck and Transit Planning
- 3I. Traffic Safety
- 3J. Travel Demand Modeling
- 3K. Congestion Management Process (CMP)
- 3L. Onondaga County Sustainable Streets Initiative
- 3M. Synchro/HCS Training
- 3N. ITS Strategic Plan Update
- 3O. Syracuse Metropolitan Area Regional Transit Study Ph. 1
- 3P. Church Street Realignment
- 3Q. Erie Boulevard East Pedestrian Study
- 3R. Bicycle and Pedestrian Safety Outreach
- 3S. Title VI Adherence
- 3T. Ladders of Opportunity - Access to Essential Services
- 3U. Roundabout Feasibility Analysis
- 3V. Complete Streets Technical Analysis
- 3W. Bridge Prioritization Assessment

UPWP TASK NO:	3A	
TASK TITLE:	Air Quality and Energy	
OBJECTIVE:	To continue to provide for air quality planning and energy initiatives and activities that comply with the Clear Air Act Amendments of 1990 and the New York State Energy Plan.	
METHODOLOGY:	<p>In September 2013, the second ten-year carbon monoxide maintenance plan for Onondaga County expired and the county’s air quality designation changed to an “attainment” area. The New York State Department of Environmental Conservation will no longer provide emission budgets for carbon monoxide; meaning, the transportation conformity process undertaken as part of the Long Range Transportation Plan (LRTP) and the Transportation Improvement Program (TIP) are no longer applicable. However, energy “impacts” will continue to be summarized in both the LRTP and TIP as necessitated by the New York State Energy Plan. The SMTC will continue its cooperative relationship with all of the appropriate agencies as needed.</p>	
END PRODUCT:	Ongoing adherence to all Federal and State programs and requirements relating to air quality and energy at the SMTC.	
Requesting / Participating Agencies:		Funding Sources:
On Behalf Of: SMTC		<u>2015-2016</u>
Participating Agencies: SMTC, SMTC Member Agencies, Other Agencies as Appropriate		FHWA ^(PL) \$ 8,000
		FTA ^(Sec. 5303) \$ 2,000
		TOTAL \$ 10,000

UPWP TASK NO:	3B	
TASK TITLE:	Bicycle/Pedestrian Planning	
OBJECTIVE:	To include multi-modal transportation planning in the MPO process, in order to effectively address bicycle and pedestrian transportation issues. Activities under this task will also contribute to improved air quality in the MPO area.	
METHODOLOGY:	<ul style="list-style-type: none"> ▪ Provide input and technical assistance from a multi-modal perspective to all SMTC transportation projects in order that bicycle and pedestrian travel are given appropriate consideration in any given SMTC project; ▪ Conduct data collection, identify and assess existing conditions, develop and evaluate alternatives and/or prepare recommendations as required; ▪ Continue meetings of the SMTC Bicycle and Pedestrian Community Interest Group; ▪ Identify issues of concern within the multi-modal arena for which a focused substantive transportation study may be appropriate; ▪ Provide staff support to multi-modal advisory committees and utilize, as appropriate, the committees as resources for providing input to specific multi-modal projects as well as multi-modal program development; and ▪ Participate in the NYSAMPO Bicycle/Pedestrian Working Group. 	
END PRODUCT:	Maintenance of a multi-modal component in all SMTC transportation projects, and miscellaneous technical reports and memoranda.	
Requesting / Participating Agencies:		Funding Sources:
On Behalf Of: SMTC		<u>2015-2016</u>
Participating Agencies: SMTC, Other Agencies as Appropriate		FHWA ^(PL) \$ 25,000
		FTA ^(Sec. 5303) \$ 0
		TOTAL \$ <u>25,000</u>

UPWP TASK NO:	3C	
TASK TITLE:	Bridge and Pavement Condition Management System (BPCMS)	
OBJECTIVE:	Complete an annual working document for SMTC member agencies and staff on bridge and pavement conditions within the SMTC planning area.	
METHODOLOGY:	<p>A Bridge and Pavement Condition Management System — a centralized database of all Federal-aid highways and bridges for cross jurisdictional comparisons — is beneficial to Metropolitan Planning Organizations. The centralized database will also allow the SMTC and its member agencies to monitor progress toward long-range planning infrastructure goals and forthcoming performance based planning activities. This database will be linked to the SMTC’s Geographic Information System (GIS). As part of the 2015-2016 work program, staff will provide pavement rating assistance along federal-aid eligible roadways owned by the City of Syracuse and Onondaga County.</p>	
END PRODUCT:	Annual working document for SMTC and member agencies of bridge and pavement conditions that includes: (1) comprehensive database of bridge and pavement conditions; (2) comparative database for individual road segments that shows condition by jurisdiction by year for all federal aid eligible roads; and (3) written summary that contains the liberal use of maps, charts, and tables to show the current bridge and pavement conditions.	
Requesting / Participating Agencies:		Funding Sources:
On Behalf Of: SMTC		<u>2015-2016</u>
Participating Agencies: SMTC, City of Syracuse, NYSDOT, NYSTA, OCDOT, Other Agencies as Appropriate		FHWA ^(PL) \$ 8,000
		FTA ^(Sec. 5303) \$ 2,000
		TOTAL \$ 10,000

UPWP TASK NO:	3D
TASK TITLE:	I-81 NEPA Involvement
OBJECTIVE: To continue active participation in the NYSDOT's I-81 Viaduct Project environmental process as a participating agency.	
<p>METHODOLOGY:</p> <p>The I-81 Challenge, a partnership between the SMTC and NYSDOT was completed in 2013. Since then, NYSDOT has initiated the NEPA (National Environmental Policy Act) process for the I-81 viaduct priority area; referred to as I-81 Opportunities.</p> <p>The SMTC will continue its engagement throughout the entirety of the NEPA process as a participating agency. This includes representation on the Community and Economic Development, and Sustainability Stakeholders' Advisory Working Groups.</p>	
<p>END PRODUCT:</p> <p>Continued agency engagement/involvement in the NYSDOT's I-81 Viaduct project.</p>	
Requesting / Participating Agencies:	
Funding Sources:	
On Behalf Of: SMTC	<u>2015-2016</u>
Participating Agencies: SMTC, CNY RPDB, CNYRTA, City of Syracuse, NYSDOT, OCDOT, SOCPA and others as appropriate.	FHWA ^(PL) \$ 20,000
	FTA ^(Sec. 5303) \$ 5,000
	TOTAL \$ <u>25,000</u>

UPWP TASK NO:	3E
TASK TITLE:	I-81 Travel Demand Modeling Project
OBJECTIVE:	To utilize the SMTC's Travel Demand Model to evaluate the existing and future traffic conditions along I-81 and surrounding local streets in the MPO area. This analysis will be performed for a variety of different potential alternatives and scenarios in the NYSDOT's NEPA process.
METHODOLOGY:	<p>The SMTC will utilize its Travel Demand Model to evaluate different alternative scenarios for the I-81 corridor in the MPO area with the goal being to demonstrate the traffic impacts/projections of those scenarios on both the state and local transportation systems. The regional modeling results will then be provided to NYSDOT for use in further micro-analyses of the transportation system associated with the I-81 NEPA process currently underway.</p> <p>The major elements of this effort are to:</p> <ul style="list-style-type: none"> ▪ Use the travel demand model to evaluate various potential concepts for the I-81 corridor (and permutations of those concepts), based on: <ul style="list-style-type: none"> - impacts to the transportation network of the greater metropolitan region; and - impacts to regional interstate access and general mobility, with an emphasis on the movement of goods and people. <p>Note: No FTA monies will be used for the contractual portion of this project.</p>
END PRODUCT:	This task will result in several detailed model outputs and analysis associated with the various alternatives examined.
Requesting / Participating Agencies:	
On Behalf Of: NYSDOT	Funding Sources:
Participating Agencies: SMTC, SMTC Member Agencies, Other Agencies as Appropriate	<u>2015-2016</u>
	FHWA ^(PL) \$ 65,000
	FTA ^(Sec. 5303) \$ 0
	TOTAL \$ <u>65,000</u>

(plus SPR expenses incurred)

UPWP TASK NO:	3F
TASK TITLE:	MPO Regional Planning Initiatives
OBJECTIVE: To allow the SMTC to be actively involved in the many important regional planning initiatives that either currently exist or may begin over the program year.	
<p>METHODOLOGY:</p> <p>Numerous significant planning initiatives either currently exist or may come to fruition over the coming program year. This project is to allow for the SMTC to participate in these initiatives. Additionally, member agencies may request SMTC specific planning, analysis, or related activities in regards to these initiatives via this task. Examples of past work that fall under this category include the Connective Corridor, Lakefront Planning, City of Syracuse Comprehensive Planning, Central New York Regional Sustainability Planning and other related activities.</p>	
<p>END PRODUCT:</p> <p>Active SMTC participation in important regional planning initiatives.</p>	
Requesting / Participating Agencies:	
On Behalf Of: SMTC/Various	Funding Sources:
	<u>2015-2016</u>
	FHWA ^(PL) \$ 20,000
Participating Agencies: SMTC, SMTC Member Agencies, Other Agencies as Appropriate	FTA ^(Sec. 5303) \$ 0
	TOTAL \$ <u>20,000</u>

UPWP TASK NO:	3G
TASK TITLE:	Long Range Transportation Plan
OBJECTIVE: Complete efforts on the development of the 2050 Long Range Transportation Plan (LRTP).	
<p>METHODOLOGY:</p> <p>As required by law, each MPO must have a complete and up-to-date LRTP. Federal Regulations dictate that the Plan be updated a minimum of every four years. The SMTC's last complete LRTP was the 2020 Long Range Transportation Plan, completed in 1995, with updates completed in 1998, 2001, 2004, 2007, and 2011.</p> <p>Efforts to develop a completely new LRTP which will include new goals and objectives, performance measures and targets is substantially underway.</p> <p>All tasks and activities conducted as part of this project will ensure that the principles and procedures of Environmental Justice and Title VI receive the appropriate attention.</p> <p>Completion, followed by formal adoption of the 2050 LRTP, is anticipated to take place during summer 2015.</p>	
<p>END PRODUCT:</p> <p>Completion of the 2050 Long-Range Transportation Plan.</p>	
Requesting / Participating Agencies:	
Funding Sources:	
On Behalf Of: SMTC	<u>2015-2016</u>
	FHWA ^(PL) \$ 70,000
Participating Agencies: SMTC, SMTC Member Agencies, Other Agencies as Appropriate	FTA ^(Sec. 5303) \$ 0
	TOTAL \$ <u>70,000</u>

UPWP TASK NO:	3H
TASK TITLE:	Rail, Truck and Transit Planning
OBJECTIVE: To include multi-modal transportation planning in the MPO process, in order to effectively address rail, truck and transit transportation issues, for moving both people and freight, as appropriate.	
METHODOLOGY:	
<ul style="list-style-type: none"> ▪ Provide input and technical assistance from a multi-modal perspective to all SMTC transportation projects in order that rail, truck and transit travel are given appropriate consideration to any given SMTC project; ▪ Conduct data collection, identify and assess existing conditions, develop and evaluate alternatives and/or prepare recommendations as required; ▪ Identify issues of concern within the multi-modal arena for which a focused substantive transportation study may be appropriate; ▪ Provide staff support to multi-modal advisory committees and utilize, as appropriate, the committees as resources for providing input to specific multi-modal projects as well as multi-modal program development; and ▪ Participate in the NYSAMPO Freight and Transit Working Groups. 	
<p>-----</p> <p>Additionally, this task will include a specific sub-item.</p> <p>1) Completion of a freight profile that is substantially underway.</p>	
END PRODUCT:	
Maintenance of a multi-modal component in all SMTC transportation projects, and miscellaneous technical reports and memoranda.	
Requesting / Participating Agencies:	
Funding Sources:	
On Behalf Of: SMTC	<u>2015-2016</u>
Participating Agencies: SMTC, CNYRTA, SMTC Member Agencies, Other Agencies as Appropriate	FHWA ^(PL) \$ 24,000
	FTA ^(Sec. 5303) \$ 6,000
	TOTAL \$ 30,000

UPWP TASK NO:	3I
TASK TITLE:	Traffic Safety
OBJECTIVE: To participate in various Traffic Safety initiatives as appropriate.	
<p>METHODOLOGY:</p> <p>Integrating safety into the transportation planning process has been the focus of various Federal and State initiatives and is strongly encouraged within Metropolitan Planning Organizations.</p> <p>Staff has been actively involved for many years on the Onondaga County Traffic Safety Advisory Board and these efforts will be continued.</p> <p>In addition, this task includes the participation of staff on a NYSAMPO Safety Working Group that is examining various traffic safety activities utilized throughout the state and their potential use within each MPO. Also, the Working Group will reach out to other state agencies such as the Department of Motor Vehicles and the Department of Transportation to better coordinate safety planning activities between MPOs and these agencies.</p>	
<p>END PRODUCT:</p> <p>Continued participation on the Onondaga County Traffic Safety Advisory Board, increased awareness regarding various Traffic Safety issues and further integration of traffic safety into the transportation planning process.</p>	
Requesting / Participating Agencies:	
On Behalf Of: SMTC	Funding Sources:
Participating Agencies: SMTC, SMTC Member Agencies, Other Agencies as Appropriate	<u>2015-2016</u>
	FHWA ^(PL) \$ 12,000
	FTA ^(Sec. 5303) \$ 3,000
	TOTAL \$ <u>15,000</u>

UPWP TASK NO:	3J	
TASK TITLE:	Travel Demand Modeling	
OBJECTIVE:	To improve and utilize the SMTC's Travel Demand Model in support of the planning needs of the SMTC and its member agencies.	
METHODOLOGY:	<p>This task involves the following:</p> <ul style="list-style-type: none"> ▪ Maintenance of the existing model. This requires utilization of additional data sets and possible consultant efforts to be sure that the agency's model will meet SMTC's needs; ▪ Continue training of existing staff on the best way(s) to utilize the model in support of the SMTC and its member agencies; ▪ Utilization of the model in support of existing projects and member agency requests for scenario planning; and ▪ Participation on the NYSAMPO Travel Demand Modeling Working Group. <p style="text-align: center;">Note: No FTA monies will be used for the contractual portion of this project.</p>	
END PRODUCT:	A maintained Travel Demand Model that meets the needs of the SMTC as well as the member agencies. In addition the model must comply with federal and state requirements for air quality and conformity.	
Requesting / Participating Agencies:		Funding Sources:
On Behalf Of: SMTC		<u>2015-2016</u>
Participating Agencies: SMTC, SMTC Member Agencies		FHWA ^(PL) \$ 44,000
		FTA ^(Sec. 5303) \$ 11,000
		TOTAL \$ <u>55,000</u>

UPWP TASK NO:	3K
TASK TITLE:	Congestion Management Process
OBJECTIVE: To update and improve upon the agency's Congestion Management Process documentation.	
<p>METHODOLOGY:</p> <p>This task involves the following:</p> <ul style="list-style-type: none"> ▪ Identifying corridors, roadway segments or intersections above an established v/c ratio with the SMTC travel demand model; ▪ Further analyzing those corridors, roadway segments, or intersections against a number of multimodal objectives and performance measures; ▪ Developing a data collection and management plan; ▪ Identifying and assessing strategies to alleviate congestion; and ▪ Preparing an implementation plan. <p>Several of the initial work efforts under this activity commenced during the 2014-2015 work program. Complete documentation will be available before October 1, 2015. This activity is closely tied in with the development of the agency's new LRTP and TIP.</p>	
<p>END PRODUCT:</p> <p>Updated Congestion Management Report for the SMTC area.</p>	
Requesting / Participating Agencies:	
Funding Sources:	
On Behalf Of: SMTC	<u>2015-2016</u>
Participating Agencies: SMTC, SMTC Member Agencies	FHWA ^(PL) \$ 16,000
	FTA ^(Sec. 5303) \$ 4,000
	TOTAL \$ <u>20,000</u>

UPWP TASK NO:	3L									
TASK TITLE:	Onondaga County Sustainable Streets Initiative									
<p>OBJECTIVE: To address several questions regarding sidewalk infrastructure. The intention is to provide detailed research into topics such as evolving policies and legislative mandates, as well as best practices in planning, designing, financing and maintaining sidewalks. This task also includes studying potential applications of research to existing issues within the MPA.</p>										
<p>METHODOLOGY:</p> <p>Sidewalk research and analysis was the first component of a multi-phased initiative to advance “sustainable streets” in the area. The Phase 1 study examined current and anticipated practices at the local, county, State and Federal levels in regards to sidewalk infrastructure.</p> <p>At a minimum, the study will:</p> <ul style="list-style-type: none"> ▪ Inventory existing sidewalk networks, including ownership and maintenance responsibility; ▪ Compile existing sidewalk regulations, standards and requirements; ▪ Identify common difficulties in sidewalk construction and maintenance; ▪ Identify zones and critical linkages where sidewalk construction and maintenance should be prioritized; ▪ Study the possible application of best practices research to existing situations in the MPA; and ▪ Summarize relevant information in a single reference document. <p>The inventory, regulation compiling and identification of priority zones tasks have been completed. The remaining items initiated during the 2014-2015 program, applications studies and overall project summarization/ documentation, are expected to be completed over the course of multiple program years.</p>										
<p>END PRODUCT:</p> <p>A final report will include an inventory of local sidewalks and sidewalk ordinances, documentation of project research, model sidewalk design standards and ordinances, an analysis of the existing sidewalk network, and applications of this research to existing cases within the MPA.</p>										
Requesting / Participating Agencies:	Funding Sources:									
<p>On Behalf Of: SOCPA</p> <p>Participating Agencies: SMTC, SMTC Member Agencies, Other Agencies as Appropriate</p>	<table style="width: 100%; border-collapse: collapse;"> <thead> <tr> <th colspan="2" style="text-align: right;"><u>2015-2016</u></th> </tr> </thead> <tbody> <tr> <td style="width: 60%;">FHWA ^(PL)</td> <td style="text-align: right;">\$ 25,000</td> </tr> <tr> <td>FTA ^(Sec. 5303)</td> <td style="text-align: right;">\$ 0</td> </tr> <tr> <td style="border-top: 1px solid black;">TOTAL</td> <td style="text-align: right; border-top: 1px solid black;">\$ 25,000</td> </tr> </tbody> </table>		<u>2015-2016</u>		FHWA ^(PL)	\$ 25,000	FTA ^(Sec. 5303)	\$ 0	TOTAL	\$ 25,000
<u>2015-2016</u>										
FHWA ^(PL)	\$ 25,000									
FTA ^(Sec. 5303)	\$ 0									
TOTAL	\$ 25,000									

UPWP TASK NO:	3M
TASK TITLE:	Synchro/HCS Training
OBJECTIVE: To provide traffic operations analysis software training for member agencies using the Synchro and HCS platforms.	
<p>METHODOLOGY:</p> <p>This task will provide consultant led training to all interested member agencies relying on Synchro, SimTraffic and/or HCS traffic operations analysis softwares. Two levels of training will be made available and will target specific user levels with such training focusing on introductory and intermediate traffic operations software applications.</p> <p>Member agency staff will become more fluent in traffic operations and their ability to more accurately create files/ models of highway conditions and potential solutions that could reduce congestion, improve safety, reduce idling times and travel times along the highway network. Four training sessions occurred during the 2014-2015 work program and one to two additional sessions are envisioned for the 2015-2016 program.</p> <p>Note: No FTA monies will be used for the contractual portion of this project.</p>	
END PRODUCT:	
Three training courses to improve member agency staff proficiency in traffic operations software.	
Requesting / Participating Agencies:	
On Behalf Of: OCDOT	Funding Sources:
Participating Agencies: SMTC, SMTC Member Agencies, Other Agencies as Appropriate	<u>2015-2016</u>
	FHWA ^(PL) \$ 12,000
	FTA ^(Sec. 5303) \$ 3,000
	TOTAL \$ <u>15,000</u>

UPWP TASK NO:	3N	
TASK TITLE:	ITS Strategic Plan Update	
OBJECTIVE:	To assist in identifying updates to various components of the New York State Department of Transportation's Regional ITS Architecture.	
METHODOLOGY:	<p>The current ITS plan for the region is nearly 10 years old and requires some updating following input from the FHWA in order to continue implementing ITS projects.</p> <p>The FHWA has specifically identified five components that need to be updated or added to the existing ITS Architecture:</p> <ol style="list-style-type: none"> 1) update listing of projects and project selection as appropriate; 2) update Turbo Architecture files; 3) amend plan for a key component that has changed (i.e., the State's METCON/SMARTNET); 4) include a maintenance plan; and 5) ensure compliance with Rule 940. <p>SMTC staff assistance will be limited to the coordination and facilitation of meetings with appropriate member agencies and other interested organizations. Relying on information/data obtained through these meetings, State DOT personnel will complete the update process. The majority of work under this task took place in the 2014-2015 work program. Staff assistance/involvement during the 2015-2016 program year is anticipated to be complete in the early part of the program year.</p>	
END PRODUCT:	Updated agency listing, meeting summaries and information necessary for the State to complete their update process.	
Requesting / Participating Agencies:		
On Behalf Of: NYSDOT	Funding Sources:	
Participating Agencies: SMTC, SMTC Member Agencies, Other Agencies as Appropriate	<u>2015-2016</u>	
	FHWA ^(PL)	\$ 8,000
	FTA ^(Sec. 5303)	\$ 2,000
	TOTAL	\$ 10,000

UPWP TASK NO:	30
TASK TITLE:	Syracuse Metropolitan Area Regional Transit Study Phase 1
OBJECTIVE:	To build on the Syracuse Transit Systems Analysis effort completed as part of <i>The I-81 Challenge</i> to refine and develop enhancements along select corridors for advancement into NEPA.
METHODOLOGY:	<p>The Transit Systems Analysis component of the <i>The I-81 Challenge</i> is a high-level examination of transit mobility challenges in the Syracuse metropolitan area that will serve as a “long range” transit vision for this area. The Syracuse Metropolitan Area Regional Transit Study (SMART) is intended to help Centro enter into the NEPA process for an advanced transit system.</p> <p>SMART 1, which is a significant collaborative effort between Centro, City of Syracuse, Onondaga County, NYSDOT and SMTC personnel, with assistance from the Federal Transit Administration, focuses on an examination and analysis of two distinct corridors called out in the Transit Systems Analysis; Regional Market/Destiny/Syracuse University and James Street/South Avenue. SMTC staff will lead the planning effort up to initiation of the NEPA process. A Scope of Work was approved and a consultant was selected to progress the work activities during the 2014-2015 program. Consultant activities will commence as part of this 2015-2016 program.</p> <p>The SMART 1 project is anticipated to last a minimum of two years.</p>
END PRODUCT:	Documentation suitable for Centro to advance into the NEPA process.
Requesting / Participating Agencies:	Funding Sources:
On Behalf Of: CNYRTA	<u>2015-2016</u>
Participating Agencies: SMTC, SMTC Member Agencies, Other Agencies as Appropriate	FHWA ^(PL) \$ 27,500
	FTA ^(Sec. 5303) \$ 27,500
	TOTAL \$ 55,000

(plus SPR expenses incurred)

UPWP TASK NO:	3P
TASK TITLE:	Church Street Realignment
OBJECTIVE: To identify if Church Street in the Village of North Syracuse could be reopened, and how, to extend between US 11 and South Bay Road.	
<p>METHODOLOGY:</p> <p>Church Street in the Village of North Syracuse, which is lined with small businesses and some residential properties intersects with Main Street (US Route 11) and terminates approximately 30 feet west of South Bay Road eliminating the opportunity for through traffic. The village's Master Plan recommends that this street be reopened to allow for future redevelopment that is stunted due to the lack of vehicular accessibility on the eastern end.</p> <p>Specific elements of this effort include:</p> <ul style="list-style-type: none"> ▪ Public outreach to businesses and residents along the roadway; ▪ Data collection and operational analysis in support of the project; and ▪ Recommended implementation as appropriate. <p>Project is anticipated for completion in early 2015.</p>	
<p>END PRODUCT:</p> <p>A final document that outlines the conditions, needs, and recommendations.</p>	
Requesting / Participating Agencies:	
Funding Sources:	
On Behalf Of: Village of North Syracuse	<u>2015-2016</u>
Participating Agencies: SMTC, SMTC Member Agencies, Other Agencies as Appropriate	FHWA ^(PL) \$ 12,000
	FTA ^(Sec. 5303) \$ 3,000
	TOTAL \$ <u>15,000</u>

UPWP TASK NO:	3Q	
TASK TITLE:	Erie Boulevard East Pedestrian Study	
OBJECTIVE:	To conduct a comprehensive study to analyze and prioritize pedestrian needs along the Erie Boulevard corridor, specifically concerned with pedestrian crossings from Beech Street in the City of Syracuse to Routes 5 and 92 in the Town of DeWitt.	
METHODOLOGY:	<p>Erie Boulevard East is a commercial district with divided roadways and limited pedestrian accommodations. There have been several pedestrian safety incidents along the corridor involving pedestrians attempting to cross the heavily traveled boulevard. This project will conduct an investigation of the existing sidewalk system and pedestrian accident history along Erie Boulevard from Beech Street to Routes 5 and 92 and identify pedestrian needs and improvement opportunities.</p>	
END PRODUCT:	A final document that outlines the conditions, needs, and recommendations.	
Requesting / Participating Agencies:		Funding Sources:
On Behalf Of: City of Syracuse and NYSDOT		<u>2015-2016</u>
Participating Agencies: SMTC, SMTC Member Agencies, Other Agencies as Appropriate		FHWA ^(PL) \$ 45,000
		FTA ^(Sec. 5303) \$ 0
		TOTAL \$ <u>45,000</u>

UPWP TASK NO:	3R
TASK TITLE:	Bicycle and Pedestrian Safety Outreach
OBJECTIVE: To build a bicycle and pedestrian training program for local law enforcement agencies and educational materials for the public.	
<p>METHODOLOGY:</p> <p>As part of this project, staff will reach out to various law enforcement agencies to determine interest level in developing and holding a bicycle and pedestrian training program for law enforcement. Additionally, Share the Road Public Service Announcement(s) will be created in coordination with the Onondaga County Traffic Safety Advisory Board.</p> <p>Note: No FTA monies will be used for the contractual portion of this project.</p>	
END PRODUCT:	
To provide bicycle and pedestrian training to law enforcement in order to improve enforcement and reduce bicycle and pedestrian incidents.	
Requesting / Participating Agencies:	Funding Sources:
On Behalf Of: SMTC	<u>2015-2016</u>
Participating Agencies: SMTC, SMTC Member Agencies, Other Agencies as Appropriate	FHWA ^(PL) \$ 36,000
	FTA ^(Sec. 5303) \$ 9,000
	TOTAL \$ <u>45,000</u>

UPWP TASK NO:	3S	
TASK TITLE:	Title VI Adherence	
OBJECTIVE: To ensure continued adherence with Title VI regulations and related statutes.		
METHODOLOGY: An overall agency Title VI and LEP Plan was finalized during the 2014-2015 work program. These plans provide a framework for consideration, inclusion and implementation within all aspects of the SMTC metropolitan transportation planning process of which will then fall under this generalized project task.		
END PRODUCT: Agency adherence with Title VI and related statutes.		
Requesting / Participating Agencies:		Funding Sources:
On Behalf Of: SMTC		<u>2015-2016</u>
Participating Agencies: SMTC, SMTC Member Agencies, Other Agencies as Appropriate		FHWA ^(PL) \$ 7,500
		FTA ^(Sec. 5303) \$ 2,500
		TOTAL \$ <u>10,000</u>

UPWP TASK NO:	3T	
TASK TITLE:	Ladders of Opportunity - Access to Essential Services	
OBJECTIVE:	To begin an examination of travel time to work via multiple modes of transportation (auto and bus) and access to other essential services specified by the FTA within the Metropolitan Planning Area.	
METHODOLOGY:	<p>As one of three USDOT Planning Emphasis Areas, this task will rely on existing datasets and member agency expertise to identify an appropriate methodology for analyzing access to essential services identified by the FTA such as access to housing, employment, health care, schools/education, and recreation. Existing datasets include, but may not be limited to, vehicle ownership, transit frequencies/schedules, employment locations, number of employees, housing ownership, and other demographic statistics. The existing, enhanced SMTC travel demand model will be utilized to define and summarize travel time to work via automobile. The area's Coordinated Plan, updated in early 2014 will be used as a starting point/reference for this specific 2015-2016 task.</p>	
END PRODUCT:	A final technical memorandum of analysis findings.	
Requesting / Participating Agencies:		Funding Sources:
On Behalf Of: SMTC		<u>2015-2016</u>
Participating Agencies: SMTC, SMTC Member Agencies, Other Agencies as Appropriate		FHWA ^(PL) \$ 8,000
		FTA ^(Sec. 5303) \$ 2,000
		TOTAL \$ <u>10,000</u>

UPWP TASK NO:	3U	
TASK TITLE:	Roundabout Feasibility Analysis	
<p>OBJECTIVE: To provide technical services to member agencies regarding the appropriateness of roundabouts at intersections.</p>		
<p>METHODOLOGY:</p> <p>Roundabouts are an increasingly popular intersection design around the country. Currently, there are no modern roundabouts in the SMTC planning area. They are more difficult to design than a typical intersection and require public outreach to educate the public on their implementation and potential safety benefits.</p> <p>This project will provide assistance in the development of a roundabout planning assessment and feasibility study for various locations. Feasibility analysis is limited to intersection operational conditions if a roundabout is constructed.</p> <p>Note: No FTA monies will be used for the contractual portion of this project.</p>		
<p>END PRODUCT:</p> <p>A final document containing the technical analysis findings for the appropriateness of a roundabout at a given intersection.</p>		
Requesting / Participating Agencies:		Funding Sources:
<p>On Behalf Of: City of Syracuse</p> <p>Participating Agencies: SMTC, SMTC Member Agencies, Other Agencies as Appropriate</p>		<u>2015-2016</u>
		FHWA ^(PL) \$ 20,110
		FTA ^(Sec. 5303) \$ 5,027
		TOTAL \$ <u>25,137</u>

UPWP TASK NO:	3V	
TASK TITLE:	Complete Streets Analysis	
OBJECTIVE:	To provide advice, recommendations, and potentially small studies to member agencies and municipalities who wish to conduct a complete street analysis on discrete blocks, or smaller specific areas.	
METHODOLOGY:	<p>The intent of this technical analysis is to allow SMTC staff to provide assistance when requested by member agencies or municipalities. Many of the smaller municipalities in the SMTC planning area do not have the capacity to undertake Complete Streets analysis and design. Technical assistance would be for small projects where the scope does not necessitate a full corridor study or individual planning project.</p> <p>Specific elements of this effort include:</p> <ul style="list-style-type: none"> ▪ Data collection (turning movement and volume counts, geometry, signal phasing); ▪ Public input with facility owner and stakeholders via small working group meetings; and ▪ Recommended planning level designs. 	
END PRODUCT:	A final document that outlines the conditions, needs, and recommendations.	
Requesting / Participating Agencies:		Funding Sources:
On Behalf Of: City of Syracuse		<u>2015-2016</u>
Participating Agencies: SMTC, SMTC Member Agencies, Other Agencies as Appropriate		FHWA ^(PL) \$ 12,000
		FTA ^(Sec. 5303) \$ 3,000
		TOTAL \$ <u>15,000</u>

UPWP TASK NO:	3W	
TASK TITLE:	Bridge Prioritization Assessment	
OBJECTIVE:	To analyze bridges on non-National Highway System roadways and prioritize such for capital programming consideration.	
METHODOLOGY:	<p>Given the fiscal realities of limited funding for transportation investments and the vast and aging infrastructure within the area, prioritizing capital improvements can be daunting. One aspect of the transportation system that will undergo re-evaluation is the number of bridges in the area, particularly those that may carry few vehicles and would have a short detour route.</p> <p>This task will analyze and compare bridges through an examination of specific and measurable criteria (such as traffic volumes, detour lengths). Once the initial examination is complete, a prioritized listing will be developed for consideration during future capital programming cycles.</p>	
END PRODUCT:	A final document that contains measurable criteria and a prioritized listing of bridges.	
Requesting / Participating Agencies:		Funding Sources:
On Behalf Of: City of Syracuse		<u>2015-2016</u>
Participating Agencies: SMTC, SMTC Member Agencies, Other Agencies as Appropriate		FHWA ^(PL) \$ 9,000
		FTA ^(Sec. 5303) \$ 1,000
		TOTAL \$ <u>10,000</u>

UNIFIED PLANNING WORK PROGRAM

FY 2015-2016

4. TRANSPORTATION IMPROVEMENT PROGRAM (TIP) (44.25.00)

4A. TIP Development and Maintenance

UPWP TASK NO:	4A
TASK TITLE:	TIP Development and Maintenance
OBJECTIVE: Maintain and update the Transportation Improvement Program (TIP). Activities for this project will also ensure that the TIP is in compliance with all federal and state requirements.	
<p>METHODOLOGY:</p> <p>The current TIP will be maintained, amended, and updated as necessary, in cooperation with the New York State Department of Transportation (NYSDOT), units of local government, and the Central New York Regional Transportation Authority (CNYRTA). It is anticipated that a full capital program update cycle will commence during the second half of the 2015-2016 work program. In relation to the capital program update, the existing project selection and evaluation process will be modified so as to be consistent with the SMTC's new 2050 Long Range Transportation Plan.</p>	
<p>END PRODUCT:</p> <p>A Transportation Improvement Program that is maintained, kept up to date and in compliance with all Federal and State requirements.</p>	
Requesting / Participating Agencies:	
Funding Sources:	
On Behalf Of: SMTC	<u>2015-2016</u>
Participating Agencies: SMTC, SMTC Member Agencies, Other Agencies as Appropriate	FHWA ^(PL) \$ 48,000
	FTA ^(Sec. 5303) \$ 12,000
	TOTAL \$ <u>60,000</u>

UNIFIED PLANNING WORK PROGRAM

FY 2015-2016

5. OTHER ACTIVITIES (44.27.00)

5A. Miscellaneous Activities and Special Technical Assistance

UPWP TASK NO:	5A
TASK TITLE:	Miscellaneous Activities and Special Technical Assistance
OBJECTIVE:	This task covers miscellaneous projects that are assigned from time to time, both short-term and infrequent long-term projects that do not warrant individual UPWP projects. Additionally, this task provides for special technical assistance to member agencies, local governments, and other agencies and/or organizations as appropriate.
METHODOLOGY:	<p>From time-to-time, miscellaneous projects are assigned to staff. Many are one time studies or reports, while other tasks are more long-term in nature, and are infrequent enough or so limited in scope of MPO participation, and, therefore, do not warrant a separate UPWP project.</p> <p>Tasks may include such activities as participation in various New York State MPO statewide initiatives, and reviewing proposed Federal regulations.</p> <p>This task also allows the SMTC to provide technical assistance to member agencies, local governments, and other agencies/organizations which were not foreseen or known during the preparation of the annual UPWP.</p>
END PRODUCT:	Various activities, technical assistance, research, analysis, published documents, memoranda, brief reports, etc., as appropriate.
Requesting / Participating Agencies:	Funding Sources:
On Behalf Of: SMTC	<u>2015-2016</u>
Participating Agencies: SMTC, SMTC Member Agencies, Other Agencies as Appropriate	FHWA ^(PL) \$ 39,502
	FTA ^(Sec. 5303) \$ 6,495
	TOTAL \$ 45,997

UNIFIED PLANNING WORK PROGRAM

FY 2015-2016

6. BUDGET TABLES

2015-2016

TABLE 1 - SUMMARY BUDGET

TABLE 2 - SUMMARY BUDGET - FEDERAL PROGRAMS ONLY

TABLE 3 - FHWA BUDGETS

TABLE 4 - FTA BUDGETS

TABLE 5 - TOTAL AUDITABLE BUDGET

TABLE 6 - STATE PLANNING & RESEARCH FUNDING

TABLE 1
2015 - 2016 SUMMARY BUDGET

TASK BUDGET									
TASK		FUNDING SOURCE							
ID	Category	FHWA - PL	FTA	FTA %	Total Federal	Total Non-Federal	State	Local	Total
1.	Program Administration and Support (44.21.00)								
A.	General Administration	\$210,000	\$70,000	25%	\$280,000	\$70,000	\$52,500	\$17,500	\$350,000
B.	Public Participation	\$22,500	\$7,500	25%	\$30,000	\$7,500	\$5,625	\$1,875	\$37,500
C.	Federal Transportation Legislation Examination and Evaluation	\$5,000	\$5,000	50%	\$10,000	\$2,500	\$1,875	\$625	\$12,500
D.	UPWP Previous Year Closeouts	\$20,000	\$0	0%	\$20,000	\$5,000	\$3,750	\$1,250	\$25,000
E.	UPWP Maintenance and Development	\$12,000	\$3,000	20%	\$15,000	\$3,750	\$2,813	\$938	\$18,750
	Total Program Administration and Support	\$269,500	\$85,500	24%	\$355,000	\$88,750	\$66,563	\$22,188	\$443,750
2.	Short-Range Transportation Planning (44.24.00)								
A.	Census Data Compilation and/or Analysis	\$7,500	\$2,500	25%	\$10,000	\$2,500	\$1,875	\$625	\$12,500
B.	Data Collection, Compilation and/or Analysis	\$30,000	\$0	0%	\$30,000	\$7,500	\$5,625	\$1,875	\$37,500
C.	Functional Classification System Review	\$10,000	\$0	0%	\$10,000	\$2,500	\$1,875	\$625	\$12,500
D.	Geographic Information Systems - SMTc	\$33,750	\$11,250	25%	\$45,000	\$11,250	\$8,438	\$2,813	\$56,250
E.	Geographic Information Systems - Member Agency Assistance	\$18,750	\$6,250	25%	\$25,000	\$6,250	\$4,688	\$1,563	\$31,250
	Total Short-Range Transportation Planning	\$100,000	\$20,000	17%	\$120,000	\$30,000	\$22,500	\$7,500	\$150,000
3.	Long Range Transportation Planning (44.23.02)								
A.	Air Quality and Energy	\$8,000	\$2,000	20%	\$10,000	\$2,500	\$1,875	\$625	\$12,500
B.	Bicycle/Pedestrian Planning	\$25,000	\$0	0%	\$25,000	\$6,250	\$4,688	\$1,563	\$31,250
C.	Bridge and Pavement Condition Management System (BPCMS)	\$8,000	\$2,000	20%	\$10,000	\$2,500	\$1,875	\$625	\$12,500
D.	I-81 NEPA Involvement	\$20,000	\$5,000	20%	\$25,000	\$6,250	\$4,688	\$1,563	\$31,250
E.	I-81 Travel Demand Modeling Project	\$65,000	\$0	0%	\$65,000	\$16,250	\$12,188	\$4,063	\$81,250
F.	MPO Area Regional Planning Initiatives	\$20,000	\$0	0%	\$20,000	\$5,000	\$3,750	\$1,250	\$25,000
G.	Long-Range Transportation Plan	\$70,000	\$0	0%	\$70,000	\$17,500	\$13,125	\$4,375	\$87,500
H.	Rail, Truck and Transit Planning	\$24,000	\$6,000	20%	\$30,000	\$7,500	\$5,625	\$1,875	\$37,500
I.	Traffic Safety	\$12,000	\$3,000	20%	\$15,000	\$3,750	\$2,813	\$938	\$18,750
J.	Travel Demand Modeling	\$44,000	\$11,000	20%	\$55,000	\$13,750	\$10,313	\$3,438	\$68,750
K.	Congestion Management Process (CMP)	\$16,000	\$4,000	20%	\$20,000	\$5,000	\$3,750	\$1,250	\$25,000
L.	Onondaga County Sustainable Streets Initiative	\$25,000	\$0	0%	\$25,000	\$6,250	\$4,688	\$1,563	\$31,250
M.	Synchro/HCS Training	\$12,000	\$3,000	20%	\$15,000	\$3,750	\$2,813	\$938	\$18,750
N.	ITS Strategic Plan Update	\$8,000	\$2,000	20%	\$10,000	\$2,500	\$1,875	\$625	\$12,500
O.	Syracuse Metropolitan Area Regional Transit Study Ph. 1	\$27,500	\$27,500	50%	\$55,000	\$13,750	\$10,313	\$3,438	\$68,750
P.	Church Street Realignment	\$12,000	\$3,000	20%	\$15,000	\$3,750	\$2,813	\$938	\$18,750
Q.	Erie Boulevard East Pedestrian Study	\$45,000	\$0	0%	\$45,000	\$11,250	\$8,438	\$2,813	\$56,250
R.	Bicycle & Pedestrian Safety Outreach	\$36,000	\$9,000	20%	\$45,000	\$11,250	\$8,438	\$2,813	\$56,250
S.	Title VI Adherence	\$7,500	\$2,500	25%	\$10,000	\$2,500	\$1,875	\$625	\$12,500
T.	Ladders of Opportunity – Access to Essential Services	\$8,000	\$2,000	20%	\$10,000	\$2,500	\$1,875	\$625	\$12,500
U.	Roundabout Feasibility Analysis	\$20,110	\$5,027	20%	\$25,137	\$6,284	\$4,713	\$1,571	\$31,421
V.	Complete Streets Technical Analysis	\$12,000	\$3,000	20%	\$15,000	\$3,750	\$2,813	\$938	\$18,750
W.	Bridge Prioritization Assessment	\$9,000	\$1,000	10%	\$10,000	\$2,500	\$1,875	\$625	\$12,500
	Total Long-Range Transportation Planning	\$534,110	\$91,027	15%	\$625,137	\$156,284	\$117,213	\$39,071	\$781,420
4.	Transportation Improvement Program (TIP) (44.25.00)								
A.	TIP Development & Maintenance	\$48,000	\$12,000	20%	\$60,000	\$15,000	\$11,250	\$3,750	\$75,000
	Total Transportation Improvement Program	\$48,000	\$12,000	20%	\$60,000	\$15,000	\$11,250	\$3,750	\$75,000
5.	Other Activities (44.27.00)								
A.	Miscellaneous Activities and Special Technical Assistance	\$39,502	\$6,495	14%	\$45,997	\$11,499	\$8,624	\$2,875	\$57,496
	Total Other Activities	\$39,502	\$6,495	14%	\$45,997	\$11,499	\$8,624	\$2,875	\$57,496
	Grand Total FHWA PL & FTA MPP Funds	\$991,112	\$215,022	18%	\$1,206,134	\$301,533	\$226,150	\$75,383	\$1,507,667
	Grand Total - All Fund Sources				\$1,206,134				\$1,507,667

TABLE 2
2015 - 2016 SUMMARY BUDGET
FEDERAL PROGRAM ONLY

TASK BUDGET											
TASK		FUNDING SOURCE					RESPONSIBILITY				
ID	Task	FHWA - PL	FTA	State	Local	Total	Staff	CNY RPDB	State*	Local	Total
44.21.00	Program Administration and Support	\$269,500	\$85,500	\$66,563	\$22,188	\$443,750	\$275,000	\$80,000	\$66,563	\$22,188	\$443,750
44.24.00	Short-Range Transportation Planning	\$100,000	\$20,000	\$22,500	\$7,500	\$150,000	\$120,000	\$0	\$22,500	\$7,500	\$150,000
44.23.02	Long-Range Transportation Planning	\$534,110	\$91,027	\$117,213	\$39,071	\$781,421	\$625,137	\$0	\$117,213	\$39,071	\$781,421
44.25.00	Transportation Improvement Program	\$48,000	\$12,000	\$11,250	\$3,750	\$75,000	\$60,000	\$0	\$11,250	\$3,750	\$75,000
44.27.00	Other Activities	\$39,502	\$6,495	\$8,624	\$2,875	\$57,496	\$45,997	\$0	\$8,624	\$2,875	\$57,496
	Total	\$991,112	\$215,022	\$226,150	\$75,383	\$1,507,667	\$1,126,134	\$80,000	\$226,150	\$75,383	\$1,507,667
		\$1,206,134		\$301,533		\$1,507,667	\$1,206,134		\$301,533		\$1,507,667

AUDIT BUDGET						
ID	Category	Staff	CNY RPDB	State	Local	Total
44.20.01	Salaries	\$613,945		\$18,505		\$632,450
44.20.02	Fringe	\$229,670		\$5,685		\$235,355
44.20.03	Travel	\$14,000				\$14,000
44.20.04	Equipment	\$27,000				\$27,000
44.20.05	Supplies	\$7,500				\$7,500
44.20.06	Contractual	\$145,237	\$80,000		\$75,383	\$300,620
44.20.07	Other	\$12,582				\$12,582
44.20.08	Indirect	\$76,200		\$16,127		\$92,327
XX.XX.XX	Toll Credits*			\$185,833		\$185,833
	Total	\$1,126,134	\$80,000	\$226,150	\$75,383	\$1,507,667
		\$1,206,134		\$301,533		\$1,507,667
		\$1,206,134				\$1,507,667

* The NYS DOT non-federal share is provided via Toll Credits for FHWA PL costs and as an In-Kind Service for FTA MPP costs.

TABLE 3
2015 - 2016 SUMMARY BUDGET
FHWA - PL BUDGET

TASK BUDGET							
ID	Task	Total	FHWA - PL	Staff	CNY RPDB	State*	Local
44.21.00	Program Administration and Support	\$336,875	\$269,500	\$208,768	\$60,732	\$50,531	\$16,844
44.24.00	Short-Range Transportation Planning	\$125,000	\$100,000	\$100,000		\$18,750	\$6,250
44.23.02	Long-Range Transportation Planning	\$667,638	\$534,110	\$534,110		\$100,146	\$33,382
44.25.00	Transportation Improvement Program	\$60,000	\$48,000	\$48,000		\$9,000	\$3,000
44.27.00	Other Activities	\$49,378	\$39,502	\$39,502		\$7,407	\$2,469
	Total	\$1,238,890	\$991,112	\$930,380	\$60,732	\$185,834	\$61,945

\$1,238,890		\$930,380	\$60,732	\$185,834	\$61,945
		\$1,238,890			

AUDIT BUDGET						
ID	Category	Total	Staff	CNY RPDB	State	Local
44.20.01	Salaries	\$507,224	\$507,224			
44.20.02	Fringe	\$189,747	\$189,747			
44.20.03	Travel	\$11,566	\$11,566			
44.20.04	Equipment	\$22,307	\$22,307			
44.20.05	Supplies	\$6,196	\$6,196			
44.20.06	Contractual	\$242,668	\$119,991	\$60,732		\$61,944
44.20.07	Other	\$10,395	\$10,395			
44.20.08	Indirect	\$62,954	\$62,954			
XX.XX.XX	Toll Credits *	\$185,833			\$185,833	
	Total	\$1,238,888	\$930,380	\$60,732	\$185,834	\$61,944

\$1,238,888	\$930,380	\$60,732	\$185,834	\$61,944
	\$1,238,890			

* NYSDOT provides it's share of the non-federal match via Toll Credits

TABLE 4
2015 - 2016 SUMMARY BUDGET
FTA BUDGET

TASK BUDGET							
ID	Task	Total	FTA	Staff	CNY RPDB	State*	Local
44.21.00	Program Administration and Support	\$106,875	\$85,500	\$66,232	\$19,268	\$16,031	\$5,344
44.24.00	Short-Range Transportation Planning	\$25,000	\$20,000	\$20,000		\$3,750	\$1,250
44.23.02	Long-Range Transportation Planning	\$113,784	\$91,027	\$91,027		\$17,068	\$5,689
44.25.00	Transportation Improvement Program	\$15,000	\$12,000	\$12,000		\$2,250	\$750
44.27.00	Other Activities	\$8,119	\$6,495	\$6,495		\$1,218	\$406
	Total	\$268,778	\$215,022	\$195,754	\$19,268	\$40,317	\$13,439

\$268,778	\$215,022	\$195,754	\$19,268	\$40,317	\$13,439
\$268,778					

AUDIT BUDGET						
ID	Category	Total	Staff	CNY RPDB	State	Local
44.20.01	Salaries	\$125,227	\$106,721		\$18,505	
44.20.02	Fringe	\$45,608	\$39,923		\$5,685	
44.20.03	Travel	\$2,434	\$2,434			
44.20.04	Equipment	\$4,693	\$4,693			
44.20.05	Supplies	\$1,304	\$1,304			
44.20.06	Contractual	\$57,953	\$25,246	\$19,268		\$13,439
44.20.07	Other	\$2,187	\$2,187			
44.20.08	Indirect	\$29,372	\$13,246		\$16,127	
XX.XX.XX	Toll Credits	\$0				
	Total	\$268,778	\$195,754	\$19,268	\$40,317	\$13,439

\$268,778	\$195,754	\$19,268	\$40,317	\$13,439
\$268,778				

TABLE 5
2015 - 2016 SUMMARY BUDGET
TOTAL AUDITABLE BUDGET

AUDIT BUDGET						
ID	Category	Total	Staff	CNY RPDB	State*	Local
44.20.01	Salaries	\$632,450	\$613,945		\$18,505	
44.20.02	Fringe	\$235,355	\$229,670		\$5,685	
44.20.03	Travel	\$14,000	\$14,000			
44.20.04	Equipment	\$27,000	\$27,000			
44.20.05	Supplies	\$7,500	\$7,500			
44.20.06	Contractual	\$300,620	\$145,237	\$80,000		\$75,383
44.20.07	Other	\$12,582	\$12,582			
44.20.08	Indirect	\$92,327	\$76,200		\$16,127	
XX.XX.XX	Toll Credits	\$185,834			\$185,834	
	Total	\$1,507,668	\$1,126,134	\$80,000	\$226,150	\$75,383

\$1,507,668	\$1,126,134	\$80,000	\$226,150	\$75,383
\$1,507,667				

* The NYSDOT non-federal share is provided via Toll Credits for FHWA PL costs and as an In-Kind Service for FTA MPP costs.

TABLE 6
2015 - 2016 State Planning and Research Funding

TASK BUDGET						
TASK		FUNDING SOURCE			RESPONSIBILITY	
ID	Task	NYS DOT - SPR	FHWA - SPR	Total	Staff	Total
44.21.00	Program Administration and Support	\$0	\$0	\$0	\$0	\$0
44.24.00	Short-Range Transportation Planning	\$0	\$0	\$0	\$0	\$0
44.23.02	Long-Range Transportation Planning	\$50,000	\$200,000	\$250,000	\$250,000	\$250,000
44.25.00	Transportation Improvement Program	\$0	\$0	\$0	\$0	\$0
44.27.00	Other Activities	\$0	\$0	\$0	\$0	\$0
	Total	\$50,000	\$200,000	\$250,000	\$250,000	\$250,000
			\$250,000	\$250,000	\$250,000	\$250,000

* Note: SPR Budget is for a total multi-year SPR project not broken down by year

AUDIT BUDGET				
ID	Category	Staff	CNY RPDB	Total
44.20.01	Salaries	\$0	\$0	\$0
44.20.02	Fringe	\$0	\$0	\$0
44.20.03	Travel	\$0	\$0	\$0
44.20.04	Equipment	\$0	\$0	\$0
44.20.05	Supplies	\$0	\$0	\$0
44.20.06	Contractual	\$250,000	\$0	\$250,000
44.20.07	Other	\$0	\$0	\$0
44.20.08	Indirect	\$0	\$0	\$0
	Total	\$250,000	\$0	\$250,000
			\$250,000	\$250,000
			\$250,000	\$250,000

UNIFIED PLANNING WORK PROGRAM

FY 2015-2016

APPENDICES

Appendix A: Other Significant Federally Funded Transportation Planning Activities - SPR

OTHER SIGNIFICANT FEDERALLY FUNDED TRANSPORTATION PLANNING ACTIVITIES

In addition to the projects included in the SMTC's program, other federal investment in transportation exists in the region. A significant effort is being undertaken by the NYSDOT for the future of the I-81 corridor, particularly the elevated components in the city. This effort, The I-81 Viaduct Project, is being closely coordinated with the SMTC and is tied into the SMTC's I-81 Travel Demand Modeling Project (in progress).

Also included in this section are the listing of Metropolitan Area NYSDOT SPR investments related to transportation planning in New York State.

SPR Funded Projects that Impact Metropolitan Areas

SPR #	Project Title	Begin/End Date	SPR Funding	Short Description
CDTC Region 1				
C-07-69	I-87 / Rt. 9 Corridor Management Feasibility Study	Dec 2010 - Dec 2014	\$500,000	Identify and evaluate opportunities to strengthen/enhance our Incident Management capability in the I-87/Route US 9 Corridor between Exit 4 and Exit 15. This project is almost complete.
SMTC Region 3				
C-07-70	I-81 Corridor Study & Project Scoping	Oct 2009 - Dec 2016	\$2,000,000	Investigate the need for transportation improvements to 10.69 miles of Interstate 81 between I-481/I-81 interchanges (Exits 16A & 29). A portion of these funds have been directed to SMTC for I-81 modeling and support work.
GTC Region 4				
C-13-53	Rochester Area Bike Sharing Program Study	Apr 2013 - Oct 2014	\$75,000	Study the feasibility of a bike sharing program to serve the City of Rochester and the Rochester Transportation Management Area (TMA) which includes all of Monroe County and the adjacent developed areas of Livingston, Ontario, and Wayne counties.
GBNRTC Region 5				
C-13-03	Advancing Smart Card and NFC Technology for BNMC	Apr 2013 - Apr 2015	\$162,600	The goal being to provide commuters with a single card (as well as mobile application) to be used for accessing various transportation services available to and from the Buffalo Niagara Medical Campus (BNMC). Partners include: Niagara Frontier Transportation Authority (NFTA), University at Buffalo (UB), Buffalo CarShare (BCS), Social Bicycles (SoBi) and Go Bike Buffalo (Go Bike).
C-13-51	Buffalo's Bicycle Master Plan	Apr 2013 - Apr 2014	\$75,000	With the City of Buffalo and the Complete Streets Coalition to develop a Bicycle Master Plan that will be integrated into and consistent with current planning initiatives such as the Buffalo Green Code and One Region Forward.
C-14-56	Residential Parking Benefits District in Buffalo, NY	Jan 2015 - Mar 2016	\$90,565	The goal of this project is to explore best practices and provide recommendations for development of a model Residential Parking Benefits District, and/or other alternative strategies, which would achieve the following goals: (1) effectively manage the on-street parking supply and demand in the neighborhood, (2) reduce the number of single occupant vehicles driving to and from the area, (3) provide a set of customizable active parking management strategies, (4) improve the access, mobility and quality of life of local residents, and (5) identify sound financial management strategies for use of potential parking revenues
C-14-57	Integrated Corridor Management for Niagara Frontier	Jan 2015 - Sept 2016	\$323,202	The objective of this Border Crossing Corridor Management Project is to optimize traffic operations by identifying effective traffic management strategies to mitigate congestion and environmental impacts.
C-14-58	Evaluating the Impacts of Complete Streets	Jan 2015 - Jan 2016	\$124,338	The goal of this project is to assess the viability of several measurement tools that are potentially applicable to quantitative evaluation of Complete Streets programs. The tools will touch upon several areas of impact, including: safety, economic and environmental impact, bike/pedestrian volume, and citizen feedback. The proposed study will deploy these measures in a field test conducted in Buffalo, NY, along four transportation corridors where Complete Streets projects have either been implemented or are planned.
Mid-Hudson MPOs (3) - Region 8				
C-11-58	Continuation with Interoperable Coordinated Signal System (ICSS) Deployment	Mar 2012 - Dec 2014	\$51,375	The goal of this project is to provide remote workstations at the CWP Police Department and NYSDOT Region 8 facilities to enable this monitoring on a more cost-effective basis than if CWP moved to a 24/7 operation.
NYMTC Regions 8, 10 and 11 as applicable				
C-14-55	IE HOV/Clean Pass -Operational Performance Scenario Analysis	Oct 14 - Sept 2015	\$100,000	The goal of this project is to analyze the operational performance of the 40-mile Long Island Expressway (LIE) High Occupancy Vehicle (HOV) lane between exits 32 and 64 under a range of potential new High Occupancy Vehicle (HOV) and Clean Pass Vehicle (CPV) eligibility policies.
C-14-12	Analysis of Energy Efficient Highway Lighting Retrofits	Nov 2014 - May 2015	\$250,000	Identify commercially available cost-effective retrofits for existing highway lighting that reduce energy consumption while meeting AASHTO Lighting Design Guide and NYSDOT standards.
C-13-02	NYC deliverEASE: Off-Hour Delivery Program	Apr 13 - Oct 2014	\$112,500	The goal of this project is to work to reduce observed barriers to adoption and increase program participation. These barriers primarily include the cost of equipment to facilitate unassisted off-hour deliveries and noise reduction.
Projects Common to Multiple or All MPOs				
C-08-71	Strategic TDM and Commuter Choice Service Planning	Aug 2009 - Dec 2014	\$2,500,000	This term agreement contract shall provide for Transportation Demand Management (TDM) and Commuter Choice service planning and actions throughout the state. These actions will enhance mobility, reduced single occupant vehicle use and vehicle miles of travel, reduced highway traffic congestion, and reduce the emission of greenhouse gases.
C-09-53	Traffic count Program Zones 3 [Regions 10, 11]	Dec 2009 - Dec 2014	\$1,625,000	Continuous count programs with full performance based maintenance and upgrade services to provide better coverage, distribution, and differentiation by functional classification of roadway, geographic area, and seasonality of traffic patterns.
C-11-51	Traffic Count Program Zone 1 [Regions 1,2,7,8,9]	June 2011 - June 2016	\$1,964,172	Continuous count programs with full performance based maintenance and upgrade services to provide better coverage, distribution, and differentiation by functional classification of roadway, geographic area, and seasonality of traffic patterns.
C-11-52	Traffic Count Program Zone 2 [Regions 3,4,5,6]	June 2011 - June 2016	\$1,780,776	Continuous count programs with full performance based maintenance and upgrade services to provide better coverage, distribution, and differentiation by functional classification of roadway, geographic area, and seasonality of traffic patterns.
C-11-55	Zone 1, Short-Term Traffic Data Collection Program (2012 -2016) [Regions 1, 9]	Sept 2012 - June 2015	\$900,000	The short-term traffic data collection program is comprised of inventory counts taken on federal, state and local owned roads both on and off the federal aid highway system (FAHS), principal arterial system (PAS) ramps, and special counts. This project is to provide for the collection of traffic data in Zone 1, Regions 1 and 9.
C-11-56	Zone 2, Short-Term Traffic Data Collection Program (2012 -2016) [Regions 2, 3, 7]	Sept 2012 - June 2015	\$981,000	The short-term traffic data collection program is comprised of inventory counts taken on federal, state and local owned roads both on and off the federal aid highway system (FAHS), principal arterial system (PAS) ramps, and special counts. This project is to provide for the collection of traffic data in Zone 2, Regions 2, 3 and 7.
C-11-57	Zone 3, Short-Term Traffic Data Collection Program (2012 -2016) [Regions 4, 5, 6]	Sept 2012 - June 2015	\$1,137,000	The short-term traffic data collection program is comprised of inventory counts taken on federal, state and local owned roads both on and off the federal aid highway system (FAHS), principal arterial system (PAS) ramps, and special counts. This project is to provide for the collection of traffic data in Zone 3, Regions 4, 5 and 6.
C-12-51	Safety Data Warehouse Business Case Development	June 2012 - Dec 2014	\$250,000	Develop a strategic vision and business case which would inform the Department of Transportation and its partner agencies of the feasibility and benefit/cost of initiating a project to create a more reliable, consistent and timely dataset for all crash data consumers by consolidating the data and resources of several State agencies.
C-12-52	VMT Base-line Traffic Count Project	May 2013 - Sept 2015	\$3,150,000	The goal of this project is to collect a sampling of geographically-distributed traffic count data on lower level (i.e., non-Federal Aid eligible) streets and roads to facilitate the development of accurate Vehicle Miles of Travel (VMT) estimates for these roads at reasonably low levels of stratification (such as by county and urban area).

SPR Funded Projects that Impact Metropolitan Areas

SPR #	Project Title	Begin/End Date	SPR Funding	Short Description
C-13-54	Statewide Coordination of Metropolitan Planning Programs	Apr 2014 - Mar 2016	\$100,000	The goal of this project is to support and maintain the ongoing coordination of the metropolitan planning programs in NYS for statewide benefit; the ongoing collaboration of the fourteen (14) metropolitan planning organizations (MPOs); and the on-going coordination of metropolitan and statewide planning programs.
C-13-56	Statewide GIS Network Creation	Mar 2014 - Mar 2017	\$3,500,000	The goal of this project is to construct an intelligent GIS Roadway Network for all public roads in NYS. The project is a result of the August 7, 2012 FHWA directive mandating the submittal of a Statewide GIS Network file matching the annual HPMS report to FHWA.
C-13-57	Highway Oversize/Overweight Credentialing System (HOOCS)	Oct 2013 - Sept 2016	\$5,000,000	The goal is to implement a Commercial Off-the-Shelf (COTS) HOOCS software solution and obtain the accompanying integration services necessary to fulfill NYSDOT's Central Permitting Bureau's business requirements.
C-13-58	AASHTO Census Transportation Planning Products (CTPP) Technical Services Program	Oct 2014 - Sept 2019	\$280,982	The goal of this AASHTO CTPP program is the delivery of special transportation data from the US Census Bureau on journey- to-work data to benefit State DOTs and Metropolitan Planning Organizations (MPOs) to accomplish planning requirements in MAP-21. Journey to work data is used by all States and most metropolitan planning organizations. CTPP is the only source for the critical journey to work data each state uses for travel demand modeling. The CTPP program will ensure production and delivery of this important transportation data, and will provide technical assistance, training, outreach and associated research.
C-13-59	Program & Project Management Software and Training	Nov 2013 - Nov 2014	\$2,000,000	The goal of this project is to provide enhanced and improved enterprise level program and project management software and hardware to facilitate improvements to the capital program delivery. Partner with the consultant, Oracle, on development of Primavera Critical Path Method scheduling software, and Oracle Primavera Portfolio Manager Programming software.
C-14-51	New York State Freight Transportation Plan	Oct 2014 - Aug 2016	\$1,300,000	The goal of this project is to develop a New York State freight transportation plan that provides a comprehensive plan for the immediate and long-range planning activities and investments of the State with respect to freight.
C-14-53	Program & Project Management Software and Training	Aug 2014 - Aug 2019	\$1,850,000	The goal of this project is to provide support services for the ongoing configuration and implementation of a Department-wide enhanced and improved enterprise level program and project management system to facilitate improvements to the capital program delivery.
C-14-54	Global Inc. Trend Data, Analysis and Forecasts	Sept 2008 - Aug 2018	\$520,000	The goal of this project is to update the socio-demographic and business economic projections, VMT model and forecasts.
C-14-61	Technical Support for Use of National Performance Management Research Data (NPMRDS)	Dec 2014 - Aug 2015	\$200,000	The goal of this project is to develop and make accessible to NYSDOT and partner planning agencies a hosted National Performance Management Research Data Set (NPMRDS) geo-database and analytic framework for performance analysis and visualization of congestion, mobility and reliability.
C-09-61	Transearch & Related Freight Data Procurement	May 2011 - Mar 2016	\$1,500,000	To obtain Transearch and related freight data on a continual subscription basis; to be able to address regular and ad hoc needs in support of ongoing planning activities and major investment studies.

SMTC SPR FUNDING

Funding for the SMTC's efforts towards the I-81 Travel Demand Modeling Project and the Syracuse Metropolitan Area Regional Transit Study Phase are being supplemented with federal SPR funds by the NYSDOT. The SPR monies being supplemented by the NYSDOT are anticipated to be spent on contractual items for the most part but may offset some staff costs if required in the future. Project descriptions for each of the above noted projects are contained in Section 3. Long Range Transportation Planning.