



# UPWP

## UNIFIED PLANNING WORK PROGRAM 2008 - 2010



SYRACUSE METROPOLITAN TRANSPORTATION COUNCIL

**Syracuse Metropolitan Transportation Council  
Unified Planning Work Program  
2008-2010 UPWP**

**2008-2010**

**UNIFIED PLANNING WORK PROGRAM**

**FOR TRANSPORTATION PLANNING**

**in the**

**SYRACUSE**

**METROPOLITAN PLANNING AREA**

**Adopted by the Policy Committee of the  
Syracuse Metropolitan Transportation Council**

**March 10, 2008**

**This document has been ADOPTED by the Syracuse Metropolitan Transportation Council (SMTC). The SMTC Member Agencies agree to the contents and will adhere to said document as necessary and to the best of their ability.**

**This document was prepared with financial assistance from the Federal Highway Administration and the Federal Transit Administration of the U.S. Department of Transportation through the New York State Department of Transportation.**

**SYRACUSE METROPOLITAN TRANSPORTATION COUNCIL  
2008-2010 UNIFIED PLANNING WORK PROGRAM**

**TABLE OF CONTENTS**

<b><u>Section</u></b>	<b><u>Page</u></b>
RESOLUTION	4
2008-2010 UNIFIED PLANNING WORK PROGRAM - PURPOSE	6
DEVELOPMENT OF THE UNIFIED PLANNING WORK PROGRAM	6
COUNCIL ORGANIZATION	7
SMTC COMMITTEE STRUCTURE	9
SMTC STAFFING	10
OPERATIONAL PROCEDURES AND BYLAWS	10
UNIFIED PLANNING WORK PROGRAM FRAMEWORK	11
2006-2008 UPWP SUMMARY OF ACCOMPLISHMENTS	12
SUMMARY OF MAJOR PROGRAMMED ACTIVITIES	25
2008-2010 UNIFIED PLANNING WORK PROGRAM OVERVIEW	26
NYS MPO SHARED COST INITIATIVES	27
2008-2010 UNIFIED PLANNING WORK PROGRAM OUTLINE	30
1. PROGRAM ADMINISTRATION AND SUPPORT	31
2. SHORT-RANGE TRANSPORTATION PLANNING	38
3. LONG-RANGE TRANSPORTATION PLANNING	43
4. TRANSPORTATION IMPROVEMENT PROGRAM	69
5. OTHER ACTIVITIES	71
6. BUDGET TABLES	73
<b><u>2008-2009</u></b>	
TABLE 1 - SUMMARY BUDGET	74
TABLE 2 - SUMMARY BUDGET - FEDERAL PROGRAMS ONLY	75
TABLE 3 - FHWA BUDGETS	76
TABLE 4 - FTA BUDGETS	77
TABLE 5 - TOTAL FEDERAL BUDGETS	78
TABLE 6 - TOTAL AUDITABLE BUDGET	79
<b><u>2009-2010</u></b>	
TABLE 1 - SUMMARY BUDGET	80
TABLE 2 - SUMMARY BUDGET - FEDERAL PROGRAMS ONLY	81
TABLE 3 - FHWA BUDGETS	82
TABLE 4 - FTA BUDGETS	83
TABLE 5 - TOTAL FEDERAL BUDGETS	84
TABLE 6 - TOTAL AUDITABLE BUDGET	85

**RESOLUTION**

**SYRACUSE METROPOLITAN TRANSPORTATION COUNCIL  
POLICY COMMITTEE**

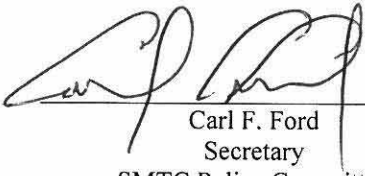
**March 10, 2008**

- WHEREAS,** In order to promote a coordinated, continuous and comprehensive transportation planning process in the Syracuse Metropolitan Area, it has been found necessary to develop and annual Unified Planning Work Program (UPWP); and
- WHEREAS,** the Safe, Accountable, Flexible, Efficient Transportation Equity Act: A Legacy for Users (SAFETEA-LU) has expanded the role of Metropolitan Planning Organizations (MPOs) and requirements for intermodal transportation planning and has committed the funds for such planning activities; and
- WHEREAS,** the SMTC Planning Committee has worked with the assistance of the Central Staff to develop a recommended UPWP so that the latest draft submitted herewith represents and accurate description of work to be undertaken and funds to be made available; and
- WHEREAS,** in recognition of the need to promote energy conservation and overall efficiency of the existing transportation system, the UPWP pursues work on several projects including (1) the Long-Range Transportation Plan, (2) the Transportation Improvement Program, and (3) the Congestion Management Process; and
- WHEREAS,** in cooperation with the New York State Department of Transportation (NYSDOT) and Environmental Conservation (NYSDEC), and in accordance with the revised New York State Implementation Plan for Air Quality, the Policy Committee continues to accept its responsibility for air quality planning during 2008-2010 for the Syracuse area; and
- WHEREAS,** the Policy Committee is committed to assuring equal opportunity to all persons in the planning of transportation services and facilities and will, during 2008-2010, complete an annual Title VI update as well as maintain expanded public participation activities; and
- WHEREAS,** in order to support these and other elements of the 2008-2010 UPWP, the Policy Committee continues its designation of the NYSDOT to be the grant applicant on behalf of the SMTC. The NYSDOT will apply for necessary regular program funding under the Federal Transit Administration (FTA) Section 5303 program, under the Federal Highway Administration (FHWA) "PL" transportation planning program and "SPR" program, and under the Federal Aviation Administration (FAA) aviation planning in amounts consistent with this approved UPWP. It is also understood that unspent funds approved during previous years under the FTA Section 5303 and FAA planning programs will be made available for expenditure during 2008-2010.

**NOW THEREFORE BE IT RESOLVED**, that the Policy Committee adopts the 2008-2010 Unified Planning Work Program and the submission thereof to the appropriate Federal and State agencies and directs the filing of appropriate applications to support the program; and

**BE IT FURTHER RESOLVED**, that the Policy Committee authorizes the Planning Committee to make revisions and refinements in funding or responsibility to the UPWP as found necessary both to finalize and implement the UPWP consistent with its overall scale and program emphasis.

Done and ordered this 10<sup>th</sup> day of March 2008 by consensus of the SMTC Policy Committee.



Carl F. Ford  
Secretary  
SMTC Policy Committee

Date: March 10, 2008

## **SYRACUSE METROPOLITAN TRANSPORTATION COUNCIL**

### **2008-2010 UNIFIED PLANNING WORK PROGRAM (UPWP) - PURPOSE**

The Unified Planning Work Program (UPWP) incorporates in one document all transportation planning and directly supporting comprehensive planning activities in the Syracuse Metropolitan Area during State fiscal years 2008-2010. It is intended to provide a mechanism for the coordination of planning efforts by local, State, and regional agencies through the Syracuse Metropolitan Transportation Council (SMTC).

The U.S. Department of Transportation (USDOT) and its modal administrations [i.e., the Federal Aviation Administration (FAA), the Federal Highway Administration (FHWA), the Federal Railroad Administration (FRA), and the Federal Transit Administration (FTA)] require this Unified Planning Work Program as a basis and condition for all funding assistance for transportation planning to State, local and regional agencies. The authority for this requirement is found in three separate Federal legislative acts establishing transportation planning programs:

1. Title 23, U.S. Code Section 134 (Federal Aid Highway Act of 1962, as amended)
2. Title 49, U.S. Code Section 1603 et. al.: (Urban Mass Transportation Act of 1964, as amended)
3. Title 49, U.S. Code Section 1701 (Airport and Airways Development Act of 1970, as amended).

### **DEVELOPMENT OF THE UNIFIED PLANNING WORK PROGRAM**

As the Metropolitan Planning Organization (MPO) designated by the Governor of the State of New York, the SMTC has the responsibility to carry out the continuous, comprehensive and cooperative transportation planning process for the Syracuse Metropolitan Area. The Unified Planning Work Program (UPWP) identifies the transportation planning activities which are to be undertaken in the SMTC study area in support of the goals, objectives and actions established in the Long Range Transportation Plan (LRTP), which was originally adopted in January 1995 and updated in 1998, 2001, 2004 and 2007. The SMTC Central Staff, working with the Planning Committee and the New York State Department of Transportation, biennially initiates the process of developing the UPWP and prepares a final draft for both Planning and Policy Committees consideration. The intent in developing a comprehensive Work Program is to ensure that a coordinated transportation planning process occurs in the region, which will make positive contributions toward achievement of the established Long Range Transportation Plan goals regarding mobility, facilities, safety, the environment, economy and land use.

The SMTC's Operations Plan outlines a framework for the Work Program that the Central Staff is expected to accomplish, and provides guidance with respect to a financial plan to support the Work Program. This 2008-2010 Work Program is intended to be consistent with the Operations Plan, as well as the metropolitan planning requirements of the Federal Safe, Accountable, Flexible, Efficient Transportation Equity Act: A Legacy for Users (SAFETEA-LU) and its implementing regulations. Compliance with these regulations frames much of this program. Further, the Work Program strives to address New York State Department of Transportation planning emphasis areas which are intended to implement the State's policies for urban area transportation planning. This is to ensure that projects conceived by the SMTC fulfill Federal and State policies, and local issues progress in a timely manner.

The status of the current Work Program is reviewed monthly by the SMTC's Executive Committee to ensure that it is being carried out in a manner consistent with the MPO's goals. While it is the mission of the Central Staff and the Executive Committee to complete work efforts within a program year, task elements may be

designed to span multiple fiscal years and therefore are carried into subsequent Work Programs to effect closure. Each year an estimate of transportation planning funds available for new programs is made. Policy direction and scope of the UPWP are developed with member agency participation based on their needs, consistent with the LRTP.

The staff, working with member agencies, establishes a list of candidate projects for inclusion in the next year's work program. Estimates of amounts and sources of funding needed to accomplish the planning program are developed. The Planning Committee then prioritizes the continuing program and the new projects. A draft UPWP is developed for Planning Committee review and recommendation of adoption to the Policy Committee. The Policy Committee has the final responsibility to adopt the UPWP.

### **COUNCIL ORGANIZATION**

The Syracuse Metropolitan Transportation Council (SMTC) is organized to facilitate and encourage maximum interaction between local, State and Federal agencies involved in the transportation decision-making process. To accomplish this, a committee structure was adopted to include the following Committees:

#### *Policy Committee*

The Policy Committee consists of the elected and appointed officials representing local, State and Federal governments and other organizations/agencies having an interest or responsibility in comprehensive transportation planning in the Syracuse Metropolitan Area. The primary responsibility of the Policy Committee is to establish policies for the overall conduct of the SMTC.

#### *Planning Committee*

The Planning Committee, which is established by the Policy Committee, is composed of the professional/technical representatives of both the Policy Committee members and public agencies having direct or indirect responsibility for transportation planning and/or implementation. Their primary responsibility is to monitor all technical activities including the annual development of a draft UPWP and TIP for recommendation to the Policy Committee. They also direct and consider for recommendation to the Policy Committee all major studies and planning activities.

#### *Executive Committee*

The Executive Committee is made up of Planning Committee members and provides oversight of the day-to-day operation of the Central Staff for financial management, personnel and other administrative requirements.

#### *Additional Committees*

An important element in the operation of the Planning Committee is the effective utilization of both formal and ad-hoc advisory committees to review and evaluate detailed Council issues and results of planning activities. The committees function principally to make recommendations to the Planning Committee on subjects directed to them by the Planning Committee which require extensive evaluation and which would be inefficient to resolve by the full committee itself.

The SMTC typically develops a project specific Study Advisory Committee (SAC) for each of its planning activities.



The SMTC also has a permanent Capital Projects Committee. The Capital Projects Committee is responsible for making recommendations to the full Planning Committee regarding project priorities to be funded by various Federal Aid Highway Programs and included in the Transportation Improvement Program (TIP).

#### *Non-Voting Membership*

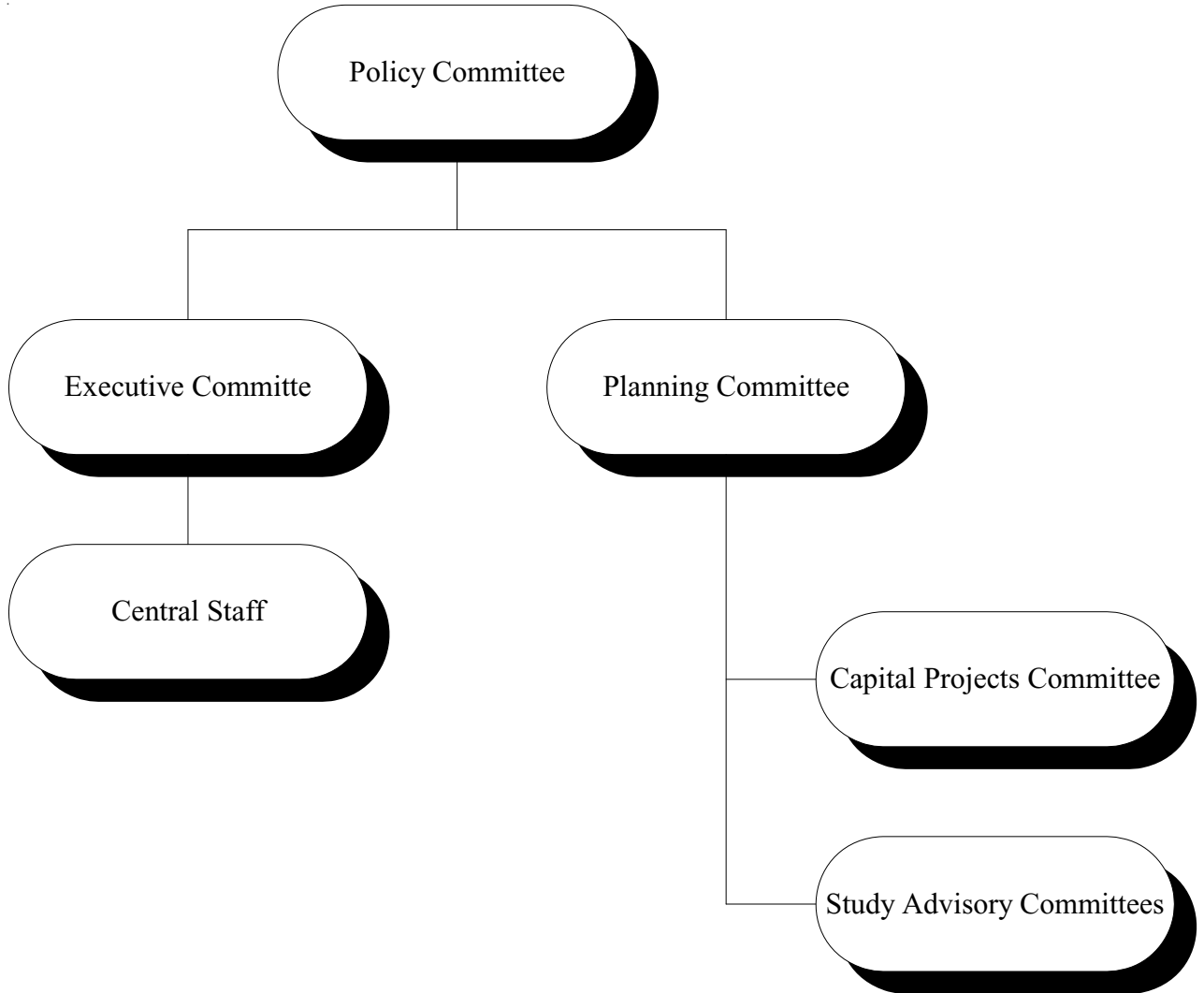
The Council maintains a non-voting membership category to accommodate agencies that have programs indirectly related to transportation and/or transportation planning. With the exception of voting on official Council business, these members are eligible to participate in Committee discussions and to receive all Committee correspondence.

#### *Organizational Objectives*

In order to achieve the SMTC program goals and the detailed technical activities inherent in them, the Council organization has the following objectives:

1. Develop an administrative committee structure which will express and coordinate transportation planning and development values, policies, and goals as related to transportation requirements at all governmental levels;
2. Provide guidance to public and private decision-makers involved in immediate implementation and long-range activities;
3. Provide technical study programs and fulfill organizational responsibilities necessary to continue transportation plan development, study refinement, and research;
4. Provide for community review of the Long Range Transportation Plan and its sub-elements, resolve conflicts with community values, and obtain participation in updating and reevaluating the plan;
5. Monitor and evaluate changes in the metropolitan structure and identify growth problems, and update the plan as necessary; and
6. Promote the coordination of planning activities to implement the “continuing, comprehensive planning” concept.

# SMTC COMMITTEE STRUCTURE



## **SMTC STAFFING**

The work proposed under this Unified Planning Work Program (UPWP) will be accomplished primarily by the SMTC Central Staff, with the assistance and cooperative support of the participating SMTC member agencies (e.g., Central New York Regional Planning and Development Board (CNY RPDB), Central New York Regional Transportation Authority (CNYRTA), City of Syracuse, NYSDOT, Onondaga County, Syracuse-Onondaga County Planning Agency (SOCPA), etc.) as well as the use of private consultants, where appropriate.

### *SMTC Central Staff*

A permanent, intermodal professional staff has been assembled to carry out the major portion of the SMTC continuing transportation planning program. This staff, consisting of a Director, professional, technical and support personnel, will pursue specific SMTC work program task elements under the direction of the Executive Committee.

Onondaga County acts as the Host agency for the Central Staff operation and contracts with the Central New York Regional Planning and Development Board (CNY RPDB) to administer the program. As part of the host's responsibility, an annual audit of the SMTC financial records is completed, as required by Federal regulations. The CNY RPDB also contributes technical support to the SMTC as needed.

### *New York State Department of Transportation Staff*

The New York State Department of Transportation (NYSDOT) has an extensive professional staff of transportation planners, analysts and both professional and support personnel, in such associated specialties as transportation planning, economics, research, data processing and environmental impact analysis. The NYSDOT provides assistance to the SMTC on various issues as requested.

### *Syracuse - Onondaga County Planning Agency Staff*

The Syracuse - Onondaga County Planning Agency (SOCPA) provides the SMTC with planning assistance and various GIS-related information.

### *Central New York Regional Transportation Authority Staff*

The Central New York Regional Transportation Authority (CNYRTA) provides the SMTC with both general and project specific data relating to transit. Such data includes ridership information, counts, scheduling, routing, etc.

## **OPERATIONAL PROCEDURES AND BYLAWS**

The SMTC operates under an adopted set of bylaws. Administrative and operational procedures are included in the SMTC Operations Plan and in the operational policies of the Central New York Regional Planning and Development Board.

Official records of SMTC business are maintained in the SMTC Administrative Offices located at 100 Clinton Square, 126 North Salina Street, Suite 100, Syracuse NY 13202. All of the SMTC records are available for public inspection during normal business hours.

## UNIFIED PLANNING WORK PROGRAM (UPWP) FRAMEWORK

The biennial UPWP establishes the transportation planning activities and programs of the Metropolitan Planning Organization (MPO) to be carried out over the course of the work program years (April through March). Other than administration, the basis of the work program is focused in three broad areas:

- I. Maintenance of a Transportation Improvement Program (TIP), which identifies projects and/or programs to receive various sources of Federal funds covering highway, transit, and intermodal facilities and programs.
- II. Maintenance and implementation of the Long Range Transportation Plan (LRTP), which identifies priority transportation system deficiencies and feasible/appropriate methods for addressing those deficiencies in a fiscally constrained environment.

Five transportation goals were identified for the Syracuse Metropolitan Area in the SMTC 2020 Long Range Transportation Plan adopted in January 1995, updated in 1998, 2001, 2004, and 2007, including: mobility, safety, environment, economy and facilities. Detailed objectives and action recommendations were also identified in regard to each of the goal areas.

- III. Recognition of requirements established by the Federal Highway Administration (FHWA) regarding the national transportation planning priorities included in the SAFETEA-LU and National Highway System legislation. The eight planning factor requirements of SAFETEA-LU are listed below:
  1. Support the economic vitality of the metropolitan area, especially by enabling global competitiveness, productivity and efficiency;
  2. Increase the safety of the transportation system for motorized and non-motorized users;
  3. Increase the security of the transportation system for motorized and non-motorized users;
  4. Increase the accessibility and mobility of people and for freight;
  5. Protect and enhance the environment, promote energy conservation, improve quality of life and promote consistency between transportation improvements and State and local planned growth and economic development patterns;
  6. Enhance the integration and connectivity of the transportation system, across and between modes, for people and freight;
  7. Promote efficient system management and operation; and
  8. Emphasize the preservation of the existing transportation system.

## **2006-2008 UPWP SUMMARY OF ACCOMPLISHMENTS**

### **General Administration**

The accomplishments under this task were necessary to ensure that the MPO functioned adequately to manage the transportation planning process, ensuring that it is continuous, cooperative, and comprehensive in nature, and that it is in compliance with applicable Federal, State, and local laws and requirements. To that end, the accomplishments under this task for the two-year period are varied and include, but are not limited to, the items summarized below:

- Held twenty-two Executive Committee, six Planning Committee, and five Policy Committee meetings over the course of the two program years and provided administrative and technical support to these committees as needed;
- Disseminated mailings and other appropriate communications as warranted;
- Maintained all financial records of revenues and expenditures;
- Upgraded and maintained in-house computer and network resources;
- Completed all required communications and coordination with NYSDOT, FHWA and FTA;
- Completed the required UPWP Semi-Annual Reports;
- Continued management of the on-call consultants retained for SMTC General Transportation Planning/Engineering Services;
- Continued training of various MPO staff as appropriate;
- Completion of a FHWA/FTA self certification review in June 2007; and
- Continued participation, as appropriate, with the American Planning Association (APA), the Institute of Transportation Engineers (ITE), and the New York State Association of Metropolitan Planning Organizations (NYSAMPO) and other professional affiliations as needed. In addition, the SMTC Administrative/Communications Assistant serves as Chairperson of the Onondaga County Traffic Safety Advisory Board.

### **Public Participation**

Significant public participation/media relations efforts and activities were conducted over the past two program years with the goals of enhancing the SMTC's transportation planning process with greater opportunities for public participation, input, involvement and exposure.

This includes but is not limited to:

- Publicized via press releases, legal notices, fliers, and presentations the commencement of planning activities and public comment periods relating to the Transportation Improvement Program (TIP) process, the UPWP process and the Long Range Transportation Plan (LRTP) 2007 Update as appropriate;
- Participated in FOCUS CNY LINK event - a full day, Innovation Expo promoting sustainable communities;
- Assisted in promoting National Bike to Work Week via press release and the SMTC web site;
- Held University Hill Transportation Study Public Workshops at the Syracuse University School of Management as well as the Sheraton Syracuse University Hotel and Conference Center;
- Held a Public Information Session on Roundabouts at the Main Branch of the Onondaga County Library;
- Held the Final Public Meeting on the F-M Road/Route 257 Sidewalk Feasibility Study;
- Held Public Meetings for the Clay/Cicero Route 31 Study at Willow Field Elementary School;
- Held Public Meetings for the Seymour-Shonnard Street Corridor Study;
- Held several SAC and stakeholder meetings for several UPWP Planning projects;
- Held a Public Meeting for the JARC/New Freedoms Initiative;
- Publicized for and participated in Safe Routes to School workshops outlining funding available via SAFETEA-LU for improving bicycle and pedestrian access to schools housing children in grades K-8;
- Maintained the SMTC web site, including the update and maintenance of interactive content components;
- Developed and distributed the SMTC newsletter, *DIRECTIONS*; and
- Initiated the Public Participation - I-81 Project (see details later in this section for projects added to the UPWP for the 2007-2008 year).

### **UPWP Maintenance and Development**

This task involved the creation and dissemination of the 2006-2008 UPWP, the 2007-2008 UPWP Amendment, and the 2008-2010 UPWP, which were all developed via a cooperative process involving all member agencies as well as the SMTC Central Staff. The SMTC received favorable responses to the 2007-2008 UPWP year call letter and several new planning items were added or amended for inclusion in the 2007-2008 UPWP Amendment (see discussion later in this section for projects added to the UPWP for the 2007-2008 year). At the direction of the SMTC Executive Committee, the SMTC did not issue a call letter for new projects for the 2008-2010 UPWP. This was decided in order to allow for the completion of the existing and required work items. A planning program was then developed within the known budgetary constraints. The draft documents then underwent the accepted committee review and approval processes. Additionally, the semiannual reports were submitted to the FHWA and FTA as required. The shift from an annual UPWP to a two-year UPWP results in a reduction of some administrative activities, but annual amendments and reporting are still required.

### **SAFETEA-LU - Miscellaneous**

The purpose of this task was to provide funds to allow the Central Staff to familiarize themselves with the Safe, Accountable, Flexible, Efficient Transportation Equity Act: A Legacy for Users (SAFETEA-LU) legislation and to educate themselves on the new regulations and requirements. Significant efforts have gone into ensuring that the SMTC was in full SAFETEA-LU compliance as of July 1, 2007, as required. This has included efforts relating to the LRTP, the TIP, the Coordinated Public Transit-Human Services Transportation Plan and the new Public Participation Plan.

As of June 12, 2007, the SMTC is SAFETEA-LU compliant in all areas according to an FHWA representative that attended the June 12 SMTC Policy Committee meeting. In September 2007, the SMTC received communication from FHWA and the NYSDOT that the agency and its documents are in compliance with relevant requirements. The SMTC continues to follow all emerging policies and practices as they relate to this topic.

### **UPWP Previous Year's Closeouts**

The purpose of this task was to provide a "catch-all" billing code and funding for closing out any outstanding UPWP activities from the previous program year that did not warrant carrying over the project to the next program year. This task was not utilized extensively within the 2006-2008 UPWP, but will continue to stand as a necessary line item within the UPWP.

### **Census Data Compilation and/or Analysis**

This task provides the SMTC with the ability to continue the process of compiling and analyzing Census Data relevant to the MPO area, and to continue to provide Census data, information, and analysis as input into appropriate SMTC planning studies. This effort supports Long Range Transportation Planning activities, Travel Demand Modeling, Environmental Justice, Title VI, and general transportation planning for the MPO. This also includes the analysis of demographic data for inclusion within various UPWP Planning Projects.

SMTC staff responded to several member agency requests for various Census-related data, maps and tables throughout the course of the 2006-2008 UPWP cycle. In addition, staff recently attended TransCAD software training for transportation modeling, which included extraction of Census data for use in transportation modeling and GIS analysis.

Staff is currently reviewing several options for organizing census data in GIS format. Organization and consolidation of this data are necessary due to its size and complexity. The goal is to become more efficient with data requests and map creation.

### **Data Collection, Compilation, and/or Analysis**

This task allows for staff to collect, analyze and utilize various forms of data that assist in the everyday operation of the Metropolitan Planning Organization (MPO). The two primary datasets utilized for this task are Transit Data and Vehicle Data.

In terms of vehicle data collection, the SMTC continued to perform its annual updates of its MS-Access database with new count information (that is linked to GIS) for each year. This allows for vehicle count locations to be mapped and for the data to be accessed automatically. This process also allows for a speedier response time to vehicle data requests. The SMTC continues to keep the interactive component of the web site up-to-date, which allows users to retrieve their own vehicle data counts by segment by municipality. Additionally, various specific counts were taken by the SMTC over the 2006-2008 cycle in response to member agency requests (both AADT and turning movement). These counts were gathered either via consultant, NYSDOT and/or SMTC staff (in the case of certain turning movement counts). Staff also continued to respond to numerous requests for vehicular count data.

In Fall 2007, several SMTC staff participated in Synchro training. Synchro is a software package for modeling traffic signal systems that can be used to optimize traffic signals and conduct capacity analysis. The training included instruction on how to build a model in Synchro and use the Synchro analysis tools, as well as the basics of the associated simulation software, SimTraffic.

### **Functional Classification System Review**

The purpose of this task was to conduct a comprehensive review of the Onondaga County functional classification system to ensure that it is consistent and coordinated with recent changes made to the City's system. Following this review, the SMTC transmitted this information to FHWA and NYSDOT Main Office. In July 2006, NYSDOT Region 3 office informed Staff that the revised functional classification maps had been approved by the FHWA and the NYSDOT Main Office. Staff then examined the approved product to ensure that it reflected the same changes/edits as approved by the SMTC Planning and Policy Committee. Through examination of the approved maps, it was discovered that there were several discrepancies between the SMTC's Policy -Committee-Approved functional classification maps as compared to the ones submitted by the NYSDOT and approved by the FHWA. The goal of the SMTC is to bring the adopted FHWA functional classification maps as close as possible into alignment with the SMTC approved versions.

SMTC continues to work with the NYSDOT, FHWA and its member agencies in an attempt to resolve the outstanding issues relating to the discrepancies between the FHWA approved functional class maps and the SMTC approved versions. Further efforts under this task will be restricted pending this delivery.

### **Geographic Information Systems (GIS)**

The SMTC has continued to improve and maintain its central GIS database library for use on all planning activities. Specific milestones worth noting for this project area include, but are not limited to, the following:

- Geocoding of the existing SMTC mailing list recipients table as suggested through the latest federal certification review;
- Providing GIS assistance to various member agencies (e.g. ArcGIS training manuals and assistance were provided to NYSDOT to further educate their staff; creation of a digital map of zip codes for use by City DPW in their parking meter maintenance efforts, etc.);
- Continuation of training of appropriate staff in the use of new GIS software and extensions (including geodatabase development, network analyst extension functionality, GIS II training and ArcGIS 9 training) by way of a NYS MPO Shared Cost Initiative;



- Staff attendance at advanced TransCAD (the SMTC's transportation modeling package) training;
- Continued updates of the MPO roads layer to more accurately reflect existing conditions;
- Continued updates of all transit routes within the SMTC area as part of annual maintenance;
- Utilization of the Pictometry (aerial oblique photographs) data for Onondaga County for planning studies;
- Map and data creation in direct support of planning projects (e.g. Mapping for the Clay/Cicero Route 31 Transportation Study, Downer Street Corridor Study, Seymour-Shonnard Street Corridor Study, etc);
- Updated the collection of parcel, real property data and associated GIS data for Onondaga County;
- Obtained and incorporated into the SMTC data library the most recent aerial photography (2006) from the NYSDOT for Onondaga and Oswego counties; and
- Continued participation in NYS MPO GIS Working Group meetings and GIS conferences to keep informed on the latest GIS activities and initiatives.

### **Air Quality, Conformity and Energy**

This task allows for the SMTC to ensure that it meets all requirements of Federal and State agencies in terms of air quality, conformity and the NYS Energy Plan. Specifically, it allows the SMTC to continue to provide for air quality planning initiatives and activities in the MPO area that comply with the conformity requirements of the Clear Air Act Amendments of 1990 and other Federal requirements, as well as evolving state regulations. Due to the passage of SAFETEA-LU in August 2005, changes in both Federal and State policy initiatives relating to air quality have resulted in a new approach to air quality and conformity for MPOs. SMTC Staff has successfully met all federal and state requirements relating to air quality, conformity and the NYS Energy Plan over the past two year cycle. Major accomplishments and milestones are noted below:

- The LRTP 2007 Update's required chapters on air quality, conformity and energy were completed;
- The transportation conformity analysis required for the LRTP 2007 Update and the 2007-2012 TIP was developed by staff and reviewed by the Interagency Consultation Group (ICG). The ICG concurred that the conformity analysis satisfactorily meets all Federal requirements. Following ICG concurrence, FHWA and FTA (with concurrence from the EPA) approved the 2007 conformity determination;
- The 2007 Greenhouse Gas and Energy Plan, also included within the LRTP 2007 Update and the 2007-2012 TIP, was deemed acceptable by the NYSDOT Environmental Sciences Bureau (formerly referred to as EAB);
- Staff completed periodic reporting and analysis of CMAQ funded projects as required and requested from State and Federal agencies;
- Staff worked with SMTC member agencies as required to ensure that appropriate guidelines were followed on CMAQ funded projects;
- Staff attended numerous meetings and conference calls with State and Federal representatives relating to air quality initiatives to ensure that the SMTC is fully versed on all requirements and obligations; and
- Staff worked with other NYS MPOs to develop a cooperative approach to fulfilling the myriad of requirements under this work item via periodic meetings, conference calls and training sessions.

### **Air / Water Planning**

The purpose of this task is to include multi-modal transportation planning in the Metropolitan Planning Organization (MPO) process, in order to effectively address air and water transportation issues, for moving both people and freight, as appropriate. The major activities completed under this task during the 2006-2008 UPWP cycle include: a major reprint (10,000 copies) of the 2002 Canal Map along with distribution of the map to several locations and venues, including the Onondaga Parks Department and the NYS Boat and Tourism show; and beginning the process of converting the map from older GIS software to the current version in an effort to keep the map up-to-date. Staff continues to attend air/water planning related meetings as they arise, including meetings relative to Onondaga Creek and its associated revitalization plan.



## **Bicycle and Pedestrian Planning**

The purpose of this task is to include multi-modal transportation planning in the Metropolitan Planning Organization (MPO) process in order to effectively address bicycle and pedestrian transportation issues. Over the past two years, the SMTC participated in a variety of activities in support of this goal. Highlights of this activity include:

- Reprinted the Bicycle Suitability Map (5,000 copies) and distribution of the map throughout the MPO area and beyond as requested;
- Participated in National Walk Your Child to School Day and promotion of National Bike to Work Week;
- Continued attendance at semi-annual pedestrian/bicycle coordinator meetings between the NYSDOT and MPO staff;
- Responded to several requests for information relative to the methodology utilized to complete the SMTC Bicycle Suitability Map and sidewalk inventory (both portions of the Bicycle and Pedestrian Plan). Requests have come from NYS MPOs as well as those throughout the country;
- Participated in quarterly meetings held between the City of Syracuse and BikeCNY cycling club;
- Provided assistance to other staff members relating to bicycle and pedestrian planning for all relevant planning projects (e.g., LRTP 2007, Corridor Studies, etc);
- Responded to requests for information from local municipalities, member agencies and the general public relative to bicycle/pedestrian planning;
- Prepared a Scope of Work for the Bicycle Network Project (described in detail later in this report);
- Attended Safe Routes to School training sessions and workshops in an effort to provide assistance to MPO area schools and/or municipalities that chose to apply for Safe Routes to School funding. SMTC has also reviewed and provided comments on the Safe Routes to School program, application and guidance developed by the NYSDOT Main Office.

## **Bridge and Pavement Condition Management System**

This project is now an established annual element of the SMTC annual work program. A Pavement Management System (PMS) is a systematic method for tracking and addressing pavement conditions. Similarly, a Bridge Management System (BMS) is a method for tracking and addressing bridge conditions. A Bridge Management System exists for New York State, and individual Pavement Management Systems currently exist in the City of Syracuse, Onondaga County and New York State. The goal of this project is to combine all of the data from the various jurisdictions into one management system that is linked to a Geographic Information System (GIS). By combining all of the condition ratings into a GIS format, data can be mapped, analyzed, presented and accessed in a most useful manner.

This report successfully compiles all of the relevant bridge and pavement condition information into an easily accessible format that is shared with all of the SMTC's member agencies and will be used as a basis for future analyses when appropriate. The BPCMS Working Document is completed annually and has been disseminated during each year of the 2006-2008 UPWP cycle to member agencies for their use.

## **Congestion Management Process (CMP)**

The purpose of this study is to biennially perform a Congestion Management Process (CMP) for various identified highways/streets within the MPO area. The CMP Study Advisory Committee (SAC) met a few times during the 2006-2008 UPWP cycle to discuss how to approach a re-write of the CMP for the MPO based on the results of the Shared Cost Initiative undertaken by the NYS MPOs in order to develop a more useful CMP product. Member agencies have decided to continue to examine congestion of both links and intersections via the CMP. The SAC also agreed to utilize the Travel Demand Model for screening level analyses to determine which road segments and intersections to include in the CMP. The SAC has chosen to continue use of volume-to-capacity ratios, level of service parameters, an excess delay calculation and speed data to determine the extent of congestion.

The CMP will also continue to be updated biennially, with a major re-write every 4 years. The CMP is also anticipated to tie into the TIP process. Staff is currently working to develop a table and maps of potential CMP locations using the 2003 PM travel demand model outputs with volume-to-capacity ratios meeting a specific threshold.

In addition, in March 2007 the FHWA met with SMTC staff in order to complete an in-depth review of the SMTC's CMP. The meeting with FHWA went well, and a draft report of their review is still pending.

### **Environmental Justice Analysis**

The purpose of this annual project is to continue to examine issues relevant to environmental justice in the SMTC area. This includes examining the relationship between various socioeconomic and demographic data and the transportation systems and plans in the MPO area. This project is an annual planning task for the SMTC.

### **I-90 Corridor Planning Study**

The purpose of this project was to provide administrative and technical assistance to the New York State Thruway Authority (NYSTA) and the New York State Department of Transportation (NYSDOT). To that end, staff has participated in a few meetings to discuss both the funding opportunities and scoping for this project, yet a final direction for this project has not yet been reached. In addition, discussions were held regarding the Village of Liverpool's desire to decrease the volume of traffic traveling through the village to reach the City and how to best accomplish this. No major activity has occurred on this project in the 2006-2008 program cycle. Further discussion will be occurring in the future. In the 2008-2010 UPWP, this potential planning task will fall under MPO Area Regional Planning Initiatives.

### **Downtown Parking Analysis and Mapping Study**

This study was undertaken by the SMTC at the request of the Downtown Committee of Syracuse, Inc. (DTC) as part of the 2006-2008 Unified Planning Work Program. The purpose of this project was to provide the DTC with a Geographic Information System (GIS) based inventory of downtown parking facilities and major employment centers, including a corresponding database of parking facility amenities in the Central Business District. The study examined the distance commuters' travel from parking lots to their employment, as well as measured the quality of their pedestrian experience during this trip.

This project was completed and delivered to the Metropolitan Development Association in July 2007. Project results can be used to support decision making by the public and private sectors with regard to parking facilities downtown, will help to optimize the use of the parking resources, and will help the public and private sectors monitor the impact of changes anticipated in the system as parking facilities are built or renovated. The results will also assist economic development efforts by providing the community with up-to-date information about the availability of parking in various facilities near major employment centers.

The City of Syracuse is currently utilizing the resulting report to supplement another parking study that is now underway in the Central Business District.

### **Lakefront Area Planning**

The purpose of this project was to allow the SMTC to continue to participate in various Lakefront Area Planning initiatives as necessary and appropriate. No major activity has occurred on this project in the 2006-2008 program cycle. In the 2008-2010 UPWP, this potential planning task will fall under MPO Area Regional Planning Initiatives.

### **Long Range Transportation Plan**

This project consisted of the continued development and completion of the LRTP 2007 Update for the 2006- 2008 UPWP cycle. To that end, the following itemizes the major work activities relevant to the LRTP 2007 Update:

- Drafted the document and held multiple SAC meetings to review the draft chapters of the document;
- Worked with the NYSDOT and FHWA to ensure that the LRTP process and product followed and met the requirements of the new SAFETEA-LU legislation, including the Travel Demand Modeling and Air Quality Conformity/Energy Plan portions of the document;
- Developed an action plan and resolution to present to the Planning Committee in February 2007 in order to be approved for a possible extension due to linking the conformity schedule to the TIP;
- Held a public meeting in mid-May 2007, conducted the 30-day Public Comment Period for review of the document, and held a public meeting for agencies involved in environmental mitigation to address concerns relating to SAFETEA-LU;
- The 2007 LRTP Update was approved by the Policy Committee on June 12, 2007, and as a result, the SMTC was the first MPO in the state to meet the SAFETEA-LU regulations; and
- Staff has disseminated the document and posted it on the SMTC web site.

In the coming year staff will begin reviewing ideas and concepts for the 2011 LRTP.

### **Northern MPA Planning**

The purpose of this project is to facilitate communication among and participate with MPO member agencies, various municipal representatives and other appropriate agencies regarding transportation planning efforts, needs and issues in the northern section of the SMTC metropolitan planning area. To that end, staff has facilitated multiple meetings, developing a vision statement and goals for this project. One of the major outcomes of this project to date is the Route 31 Clay/Cicero Transportation Study currently underway. Other accomplishments of this group include bringing in several speakers to discuss various planning concepts that could be utilized within the northern section of the SMTC MPA. Subcommittees have been, and will continue to be, formed on topics that the group feels need additional discussion and time, such as traffic issues in the Village of Liverpool, and a potential subcommittee focused on billboard regulations.

### **Operations and Integration**

This task allows for the SMTC to facilitate communication among the various SMTC member agencies relative to System Operations and Integration, including Intelligent Transportation Systems (ITS) issues and the recently completed ITS Strategic Plan for the Syracuse Metropolitan Area. To that end, staff has worked with appropriate member agencies on various ITS initiatives including continued participation in the Syracuse Signal Interconnect Expansion project meetings at the request of the City.

### **Rail/Truck and Transit Planning**

The purpose of this project is to include multi-modal transportation planning in the Metropolitan Planning Organization (MPO) process in order to effectively address rail, truck and transit transportation issues for moving both people and freight, as appropriate. Major accomplishments completed under this item include:

- Update of the transit route GIS file with all fixed routes in operation in Onondaga County;

- Utilization of previously completed transportation/human service documents as an interim locally developed, coordinated public transit-human services transportation plan for the area;
- Created an application for the solicitation of FTA Section 5316 (Job Access and Reverse Commute) and Section 5317 (New Freedom) funds;
- Completed the competitive selection process as required by SAFETEA-LU to continue the dispersal of FTA Section 5316 and Section 5317 funds that included a public information session, a Coordinated Plan Review Team meeting and approval by the Planning and Policy Committees; and
- Staff attendance at CNYRTA's regularly scheduled board meetings.

### **Title VI Report**

This project's objective was to complete a Title VI Report that assesses the services and facilities of the Central New York Regional Transportation Authority (CNYRTA) that is in compliance with the Federal Transit Administration's Title VI regulations. By following the required elements of a Title VI analysis as outlined by FTA Circular 4702.1A, SMTC staff was able to produce a comprehensive examination of the demographic and transit conditions serviced by the CNYRTA. This was completed through various SAC meetings, detailed mapping and analysis, and the generation of a report. The FTA accepted the completed report and commended the CNYRTA once again on its content.

### **Emergency Travel Routes**

The purpose of this planning task was to develop an integrated emergency transportation and travel management plan to coordinate the responses of transportation departments, traffic management, transit providers, emergency communications, and public information in the event of natural or other community disasters for Onondaga County. This multi-year project began in earnest during the 2007-2008 program year. Major accomplishments completed under this item include:

- A kick-off working group meeting held to determine the direction of the project;
- Development and approval of a Scope of Work;
- Formation of a comprehensive Study Advisory Committee (SAC);
- Several project visioning meetings held with the SAC, whereby goals, objectives and a problem statement were developed; and
- An RFI/Q developed and published in the New York State Contract Reporter and mailed to several consulting firms.

Through the information received through the RFI/Q process, the SAC determined that an RFP should be drafted and reviewed by the SAC early in 2008. Because of the overlap with the County's new All-Hazard Plan, which should be completed by late summer, the SAC determined that the final RFP should not be published until that time. Therefore, the initiation of the requisite RFP for this project will not occur until summer of 2008.

### **Transportation/Land Use Educational Outreach**

The intent of this project is to provide an educational outreach program for municipal officials related to the transportation-land use connection and the local planning process. Over the past year, the SMTC developed a narrated presentation that discusses local trends that influence planning in our region, transportation and land use planning concepts and processes, funding opportunities for planning studies, and other related topics. A self-running CD was created that includes the presentation and links to relevant web sites and related local planning documents. The CD has been reviewed and approved by the Transportation-Land Use Educational Outreach Working Group. The SMTC is now in the process of obtaining acknowledgment from the Planning and Policy Committees, after which the CD will be finalized and distributed to local planning boards throughout the SMTC planning area.

### **Travel Demand Model**

The purpose of this project through the 2006-2008 UPWP cycle was to complete any outstanding issues related to the migration of the SMTC to a new Travel Demand Model and utilize the model as necessary and appropriate. Selected major accomplishments under this effort are itemized below:

- Resolution of outstanding issues with the modeling consultant relating to the delivered product. Received a revised deliverable (model plus documentation) in October 2006;
- Retention of a modeling consultant for on-call modeling activities for the coming year to assist with modeling projects;
- ICG concurrence given to the SMTC on the requirements related to the agency's conformity determination and related modeling efforts;
- Engaging of a consultant to perform the required conformity modeling - completed in April 2007, resulting in SMTC completing its air quality analysis;
- Completion all modeling relative to the TIP and LRTP 2007 Update;
- Initiation of a consultant contract to begin creation of a modeling interface to aid in "in-house" modeling efforts;
- Staff attendance at formal training at CALIPER as well as advanced TransCAD training sessions provided by the NYSMPOs to further the ability of the SMTC to use the software in-house;
- Utilization of the model to fulfill requests from Fayetteville and the City of Syracuse regarding respective projects in those jurisdictions; and
- Receipt, review, and training of the staff on the modeling interface and documentation developed by the consultant.

Staff provided edits on the modeling interface in late 2007. The edits have been completed and the model interface task was recently finalized by the consultant. Additionally, staff is currently preparing for the use of the travel demand model and interface on several projects.

### **University Hill Comprehensive Transportation Study**

The purpose of this project was to complete a comprehensive transportation study of the University Hill area. This study has focused on three primary areas: Interstate Access, Institutional Parking, and Transit, Walking and Biking. The plan has identified proposed improvements to meet the needs of University Hill for these three issues as it develops over the next 20 years. A major aim of the initiative has been to ensure the economic viability of the institutions located in the study area while minimizing impacts to surrounding neighborhoods.

Throughout the 2006-2008 UPWP cycle, several Working Group and Public Meetings were held to review and comment on the various draft portions of this project. The study was acknowledged by the Policy Committee on November 26, 2007, and is now complete. Staff is currently in the process of developing a Scope of Work and RFP for Phase II of this study and plans to hire a consultant to complete a single detailed feasibility study for three of the University Hill Study recommendations: 1) installation of roundabouts on Almond Street; 2) reconfiguration of selected one-way street segments to two-way; and 3) lane narrowing of Almond Street.

### **Thompson Road Travel Demand Modeling**

The objective of this project was to assist the Onondaga County Department of Transportation in determining the necessary design characteristics for Thompson Road in 2008–2009. This project included two primary tasks, both of which were completed by a consultant: development of 24-year future traffic volumes in the study area using the SMTC’s travel demand model and operational analysis of the existing and future conditions. The final technical memorandum submitted to the SMTC included a comparative analysis of future traffic conditions with and without improvements that had been proposed by the OCDOT.

### **Clay/Cicero Route 31 Transportation Study**

The purpose of this study is to develop long-term (10-20+ years) transportation and land use concepts that preserve and enhance the capacity of the Route 31 corridor in the Town of Clay and the Town of Cicero while meeting the future needs and vision of the community. This study was initiated during the 2005-2006 UPWP year.

Accomplishments over the past year include:

- Completion of a travel demand modeling task for the Town of Clay that examined the impact of a set of development proposals and transportation network changes in the Route 31/Route 57 area;
- Completion of Technical Memorandum #1 (existing conditions) and Technical Memorandum #2 (issues and goals). These memoranda were developed in consultation with the Study Advisory Committee (SAC) through a series of SAC meetings;
- A public meeting was held to introduce the study to the community and seek initial feedback on the study issues and goals;
- The Modeling Working Group was convened to define the details of the Future Base and alternative scenarios that will be evaluated using the travel demand model. Details of the Future Base and initial set of alternatives have been reviewed with the full SAC; and
- A Request for Consultant Assistance has been sent to the SMTC’s travel demand modeling consultant. Once the details of this contract are finalized, analysis of the Future Base land use and transportation conditions can be progressed.

Work yet to be completed includes: travel demand modeling for alternatives analysis, review of analysis results with the SAC, development of recommendations, and two more public meetings. This project is expected to continue for another six to nine months.

### **CSX Intermodal Transportation Study**

This project’s purpose was to complete a detailed land use and transportation plan that will provide for improved road service to the CSX intermodal facility and other commercial and industrial uses in the study area. This will be a consultant-based study. The consultant will be responsible for preparing an analysis/preliminary engineering program that will examine potential alignments for better intermodal connectivity between the rail yard, local road system, and the interstate system. Elements of the study will include confirmation of the project, project information and data collection, alternative development profiles, a generic environmental impact statement, a preliminary design and engineering report, and community presentations. This study is expected to be progressed by the project sponsor in the 2008-2009 program year.



### **Fayetteville-Manlius Road/Route 257 Pedestrian Accommodation Feasibility Study**

This study began in the 2005-2006 UPWP year and is complete as of November 2007. The purpose of this project was to determine the feasibility of establishing a pedestrian connection on Route 257 between the Villages of Fayetteville and Manlius.

Major accomplishments of this study during the 2006-2008 UPWP years included:

- Drafted the various chapters of the report and review of these chapters by the Study Advisory Committee;
- Held several Study Advisory Committee meetings;
- Worked with the consultant on key components of the study, including mapping of the ROW along Route 257, alternative options for establishing a pedestrian connection between the two villages, and development of rough cost estimates for each of the alternatives;
- Held the final public meeting for the study; and
- Finalized the report (acknowledged by the Policy Committee in November 2007) and transmitted the Final Report to the Town of Manlius.

### **Traffic Safety**

The purpose of this study is to participate in various Traffic Safety initiatives as appropriate. Over the past year staff participated actively with the Onondaga County Traffic Safety Advisory Board (OCTSAB) as well as participated in several meetings of the NYSMPO Safety Working Group.

### **Waste Collection Route Optimization Study**

This study's purpose has been to complete a waste and recycling route optimization for the City of Syracuse. Accomplishments through the 2006-2008 UPWP years include:

- Hiring of a consultant to complete this project;
- Data collection by SMTC and City DPW staff, including a GIS/Conflation project completed by a City intern as well as GPS tracking of the current waste and recycling routes and review/testing of GPS collected data;
- Receipt of Data Collection Plan developed by the consultant;
- Collection of additional data sets as the GPS-collected data did not produce quality results (i.e., daily surveys completed by truck drivers to obtain timing and geographic data, etc.);
- Several presentations given to the Mayor's SyraStat Panel on project progress; and
- Delivery of first step of optimized routes and initial review by City of these routes.

The consultant is currently in the process of completing the draft optimized routes. Once the draft routes are delivered to the SMTC, the City will begin the review process. Draft routes should be delivered to the SMTC in the near future. This project is nearly complete.

### **Transportation Improvement Program**

This project's purpose was to maintain and update the Transportation Improvement Program (TIP) for 2005-2010 and develop the 2007-2012 TIP. Activities for this project also ensure that the TIP has complied with the requirements of the Clean Air Act, and is in conformity with the New York State Implementation Plan (SIP) for air quality. Over the past two years, the following occurred: staff facilitated the Capital Projects Committee process; consulted with the Interagency Consultation Group as a required transportation conformity measure; and created a Draft TIP; the Draft TIP was then presented to both Planning and Policy Committees for approval.

## **Miscellaneous Activities & Special Technical Assistance**

This task covered miscellaneous projects that are assigned from time to time, both short-term and infrequent long-term projects that do not warrant individual UPWP Tasks. Over the past year, staff participated in numerous minor efforts under this task to further the needs of both the SMTC and its member agencies, including revisiting the 2003 Break-In-Access Study: Soule Road (Carling Road Extension Evaluation) study on behalf of the NYSDOT, and assisting the City of Syracuse Department of Public Works and Department of Community Development with an educational seminar on modern roundabouts.

### **The next five (5) projects were added to the UPWP for the 2007-2008 year:**

#### **Seymour-Shonnard Corridor Study**

The purpose of this study was to evaluate the feasibility and appropriateness of converting Seymour Street, Shonnard Street, and a portion of Gifford Street from one-way to two-way operation. Accomplishments over the past year include:

- Creation and approval of a Scope of Work;
- Data collection, including traffic counts and field work conducted by the NYSDOT, the City of Syracuse, and SMTC staff;
- Creation and distribution of an introductory flier to introduce the study to the community;
- A public meeting to review the study purpose and process with the community;
- Traffic operations analysis at the study area intersections for existing and two-way traffic conditions; and
- Other analysis, including an accident analysis and a review of bicycle/pedestrian conditions, parking, transit, vehicle speeds, and school traffic.

Study Advisory Committee meetings have been held throughout the study process. An additional public meeting was held in February 2008 to present the analysis results to the community. Following the public meeting, SMTC staff is working with the SAC members to develop recommendations for the study area and to produce the final report. This project is expected to be complete by the summer of 2008.

#### **Public Participation - I-81**

This project was initially added as a task under the broader Public Participation umbrella. The purpose was to initiate a specific public outreach effort on behalf of the NYSDOT to create a public forum for the identification of major community issues related to changes on Interstate 81 through the city of Syracuse. To accomplish this, the SMTC has agreed to reach out to a variety of community groups to identify the major community issues related to potential changes on I-81 through the City of Syracuse. Five priority result areas will be examined via this effort, which are: 1) Mobility; 2) Safety; 3) Economic Sustainability; 4) Security; and 5) Environmental Conditions.

Major accomplishments that occurred during the 2007-2008 UPWP year include:

- SMTC Staff working throughout late summer 2007 to establish consistent communication with NYSDOT leadership on the goals and protocols for the I-81 Public Participation Project;
- Working with the NYSDOT to develop a draft Scope of Work; and
- Reviewing the draft Scope of Work with an I-81 Public Participation Project scoping group, consisting of Planning Committee members.

A final draft Scope of Work was presented to the Planning Committee for approval on February 4, 2008.



### **Downer Street Corridor Study**

The purpose of this study was to complete a transportation study for the Downer Street corridor in the Town of Van Buren and Village of Baldwinsville that examined transportation and mobility conditions and issues. The study also involves a land use analysis in terms of examining the transportation and land use connection in the study area, how these factors currently impact each other, and how to best plan for future interactions of the transportation and land use in the study area. Accomplishments over the past year include:

- Creation and approval of a Scope of Work;
- Development of a more detailed problem statement, goals, and a plan for public involvement for the study with the Study Advisory Committee;
- Data collection and summary of existing conditions, resulting in draft Technical Memorandum #1;
- Review and capture of edits on Technical Memorandum #1 by the Study Advisory Committee; and
- Development of an RFP for consultant services for the remainder of the project.

A consultant has been hired and began work on the project in January 2008.

### **I-81 Travel Demand Modeling**

The purpose of this task is to utilize the SMTC's Travel Demand Model to evaluate the existing and future traffic conditions along I-81 between both I-481 interchanges (Exits 16A and 29). This analysis will be performed for a variety of different potential alternatives and scenarios. Staff is currently coordinating with the NYSDOT to draft a working Scope as a starting point for the SMTC's member agencies for this project. This project will be tightly coordinated with the SMTC's Public Outreach efforts for the I-81 Corridor.

### **Bicycle/Pedestrian Planning - University Hill Bike Network Project**

This project was initially developed under the General Bicycle and Pedestrian Planning Task for the SMTC. The purpose of this study is to lead an effort for the City of Syracuse to develop a Bike Network project within the University Hill area. The project will examine the Bike Boulevard Network routes recommended in the University Hill Transportation Study and develop a proposed network to utilize existing urban roadways to provide a hybrid of bicycle lanes, shared roadways and traffic calming to create a grid of streets that encourage daily use of bicycles for urban transportation. Accomplishments over the past year include:

- Creation and approval of a Scope of Work;
- Formation of Study Advisory Committee and project kick-off meeting with the SAC;
- Development of a more detailed problem statement, goals, and a plan for public involvement for the study with the Study Advisory Committee;
- Data collection and mapping of existing conditions; and
- Development of a Scope of Services for consultant assistance on specific aspects of the project.

The consultant is expected to begin assisting SMTC on specific planning components of this study in March 2008. The project is anticipated to be complete in late summer 2008.

## **SUMMARY OF MAJOR PROGRAMMED ACTIVITIES**

The 2008-2010 SMTTC Unified Planning Work Program (UPWP) is based on the SMTTC's 2020 Long-Range Transportation Plan, which was updated and approved by the Policy Committee. Emphasis has been placed on developing a program which can be reasonably accomplished with available staff and consultant resources and which is in keeping with the priorities of the SMTTC area. This 2008-2010 UPWP emphasizes activities that promote the implementation of the existing Plan.

The Safe, Accountable, Flexible, Efficient Transportation Equity Act: A Legacy for Users (SAFETEA-LU) and other Federal legislation (1990 Clean Air Act Amendments and Americans With Disabilities Act of 1990) significantly impact the manner in which the cooperative, continuous and comprehensive transportation planning process is administered. Among the opportunities are funding flexibility, intermodal planning, protection of the environment and the maintenance and preservation of existing transportation infrastructure.

Tasks within this Work Program are organized into several major categories to facilitate review and management as follows:

### **1 — Program Administration and Support**

This category includes general administration, UPWP maintenance and development and public participation. In addition, funding has also been included for the staff to become educated on the new SAFETEA-LU legislation and requirements.

### **2 — Short Range Transportation Planning**

This category includes projects which could be implemented in a shorter time frame and includes activities related to the Census data, transit and vehicle data collection and Geographic Information Systems (GIS) activities.

### **3 — Long Range Transportation Planning**

The majority of UPWP projects that fall under this category are either annual activities or projects that tend to take longer to complete.

### **4 — Transportation Improvement Program (TIP)**

This category includes various tasks associated with the administration and maintenance of the TIP, which identifies projects and programs to receive various sources of Federal funds covering highway, transit, and intermodal facilities and programs.

### **5 — Other Activities**

This category includes miscellaneous activities and special technical assistance not otherwise covered.

### **6 — Budget Tables**

## **2008-2010 UNIFIED PLANNING WORK PROGRAM OVERVIEW**

The 2008-2010 Unified Planning Work Program (UPWP) is based on SMTC's Long Range Transportation Plan, updated and approved by the SMTC Policy Committee. The goals for this program year are threefold:

- Goal #1:** To complete outstanding 2007-2008 UPWP tasks
- Goal #2:** To commence new 2008-2010 UPWP tasks
- Goal #3:** To proceed with existing and proposed recurring activities

### **Goal #1**

In order to attain Goal #1, the following specific projects carried over from the 2007-2008 UPWP will be continued:

- Functional Classification System Review
- Clay/Cicero Rt. 31 Transportation Study
- CSX Intermodal Transportation Study
- I-81 Public Participation Project and I-81 Travel Demand Modeling
- Northern MPA Planning
- Downer Street Corridor Study
- University Hill Bike Network Project
- Waste Collection Route Optimization Study
- Emergency Travel Study

### **Goal #2**

Goal #2 will include the commencement of the new 2008-2010 tasks:

- Carrier Site Access Transportation Study
- University Hill Transportation Study Phase II: Feasibility Study for Short Term Transportation Recommendations
- University Hill Transportation Study Phase II: Feasibility Study for Park and Ride Initiative
- MPO Area Regional Planning Initiatives

### **Goal #3**

The tasks below make up the remainder of the program and are either required, necessary or annual activities.

- General Administration
- Professional Services
- Public Participation
- SAFETEA-LU - Miscellaneous
- UPWP Previous Year Closeouts
- UPWP Maintenance and Development
- Census Data Compilation and/or Analysis
- Data Collection, Compilation and/or Analysis
- Geographic Information Systems
- Air Quality, Conformity and Energy
- Air/Water Planning
- Bicycle/Pedestrian Planning
- Bridge & Pavement Condition Management System
- Congestion Management Process
- Environmental Justice
- Long-Range Transportation Plan
- Operations and Integration
- Rail, Truck and Transit Planning
- Traffic Safety
- Transportation-Land Use
- Travel Demand Modeling
- TIP Development and Maintenance
- Miscellaneous Activities & Special Technical Assistance

Some of these tasks result in an annual/biennial report that is reviewed by the appropriate SMTC Committee(s), while others are simply a required or necessary aspect of the MPO planning process.

# **New York State Metropolitan Planning Organizations**

## **Shared Cost Initiatives**

In addition to the projects included in the SMTC's program, staff will be participating with other New York State Metropolitan Planning Organizations on several Shared Cost Initiative (SCI) projects. A status report of the SCI projects is detailed below. The SMTC's federal allocation accounted for in the budget tables does not include the set-aside for these SCI projects, as the allocation was previously adjusted proportionally by the New York State Department of Transportation (NYSDOT). In addition, the SMTC FHWA allocation has also been adjusted to account for the annual Association of Metropolitan Planning Organization's dues. The SCI projects are outlined in the descriptions and table that follow for 2008-2009.

### ***FY08-09 New Shared Cost Initiatives Program***

#### **Project Descriptions**

#### **1. Project Data System**

This project would be conducted in partnership with the NYSDOT and the purpose of the project is to develop a consistent project information and data system (including safety data, project data, and conformity data) that is needed for TIPs, the STIP, safety planning, and conformity purposes. There are many examples in other states of consistent project data reporting that could be investigated. This project would be closely coordinated with NYSDOT MPO members of the Interagency Consultation Group (ICG), the state and federal ICG members, and other offices within the NYSDOT to ensure that the project data system will meet the requirements for transportation conformity, safety reporting and other federal requirements. The benefits of this project include: a consistent project information format statewide; statewide agreement on project information that must be provided to advance projects to a TIP, a STIP and transportation conformity; and standard project information that is needed to advance projects in the TIP. Host MPO: NYMTC

#### **2. Mitigation Cost Sharing**

This project would help the NYSMPOs to explore better ways to integrate transportation and land uses through the exploration of mitigation cost sharing possibilities and their application to privately funded developments. Time and again, private development has completely altered the functional characteristics of the transportation system with little or no mitigation. MPOs must take into consideration land uses and changes thereto, in their Long Range Transportation Plans. Further, in recent years there has been increased emphasis by the U.S. DOT and Congress on better integrating transportation and land uses. In order to foster integrated land use and transportation decisions and the need to address the mitigation of privately funded project impacts, communities outside of New York State have used impact fees, typically charged to a developer on a per-square-foot basis, to fund various needed transportation improvements and mitigation activities. However, impact fees are not permitted in New York State.

Some communities in New York State successfully use mitigation cost sharing. Generally, this involved the completion of a Generic Environmental Impact Statement (GEIS) and creation of an area-specific formula relating capacity consumption to new development. Many planners talk about using this mechanism to promote integrated transportation and land use planning; however, there is little guidance on how to implement this in a community, especially if there is initial resistance to the idea.

Project products would include: 1) Compilation of examples of good GEIS processes; 2) Development of funding formulas appropriate for adoption in individual communities; 3) Identification of the benefits this has provided in communities where it is in place; and, 4) A training program that includes the following courses: (a) differences between impact fees and mitigation cost sharing; (b) the GEIS process, (c) the players involved and how to get a mitigation cost sharing initiative adopted by a municipality; and, (d) legal issues and how to develop a successful formula. Host MPO: CDTC

#### **3. Software Standardization for Visualization and Desktop Publishing**

This project would help the MPOs in implementing the federal visualization requirement as well as explore the best available software and tools to enhance public outreach and project visualization.

The first task would review available software such as Community Viz, which allows the user to compare land use scenarios side-by-side (2D or 3D) as well as the economic, social, and environmental impacts. A scenario's assumed inputs and variables can be easily altered and the changes placed on a time scale (temporal) to view changes over time. The ArcGIS extension is beneficial for communities to evaluate potential impacts of land use decisions, including impacts to the transportation system. Task #1 would include: 1) Review most appropriate visioning software based on compatibility with ArcGIS; 2) Purchase and distribute software to each MPO; and 3) Hold training for all MPOs in the use of the software. Task #2 would include: Identify and explore tools that combine functions of In-Design, Adobe PhotoShop and Adobe Illustrator into one software package. Using and acquiring this tool may be beyond the capabilities of some MPOs without SCI assistance. This tool can be used to enhance public outreach and project visualization. By standardizing with a software platform, MPOs can share ideas and resources effectively and similar to how the MPOs currently share GIS and modeling efforts. 1) Identify best practices in combining these functions into one software package; 2) Make recommendations on suggested software; 3) Purchase software for MPOs; and 4) Provide training to MPOs once software is in place. Host MPO: AGFTC (Financing), SMTC (Project Management)

#### **4. Future Transportation Revenues: Beyond Federal and State Sources**

It has become clear that traditional federal transportation funding programs are strained and the ability of MPOs to implement their programs becomes increasingly difficult. Alternate revenue sources and financing possibilities currently exist or are conceptually developed that may help bridge the gap between regional expectations and availability of resources to carryout the program. This project would: 1) Detail potential revenue expansion possibilities, including but not limited to tax and tolling, private revenue sources, Public-Private-Partnerships (PPP), advertising, value capture, long term bonding, etc; 2) Describe needed organizational arrangements in terms of legal/institutional capacity to implement new revenue programs; and 3) Analyze gaps between current structure of New York State MPOs and the requirements described in Task 2.

This project would be carried out in partnership with the NYSDOT. A possible second phase of this project would be to update the NYSMPO Needs Study that was completed a few years ago. Host MPO: GBNRTC

#### **5. Training**

This project is a continuation of the NYSMPO training program. Specific courses requested include:

- Public Meeting Facilitation: Practical, hands-on training which include techniques and methods that can be used in real life planning meetings to help educate and inform the public. The goal is a real world class on use of real world methods.
- Planning and Pedestrian training.
- Presenting Data Course: Customized for helping MPOs facilitate transportation and land use integration in their regions.
- Emergency Preparedness Planning: A course is needed that is appropriate to MPOs (e.g. how can MPOs be sure to include emergency preparedness planning in their processes effectively and realistically?) This would be in the form of a class with materials that the MPOs could then use to assist them at the individual MPO level.
- Micro-Simulation Training.
- Introduction to GIS/Advanced GIS/Other courses to be offered every year.
- Safety Working Group: On-location safety audit training for 13 MPOs.
- Impact Fees and Mitigation Cost Sharing.
- General Environmental Impact Statement process.
- How to Implement Mitigation Cost Sharing in a Municipality.
- Planning Courses.

Host MPO: GTC

#### **6. Staff Services Support Contract**

This project is a continuation of staff support services.

Host MPO: CDTC

SHARED COST INITIATIVE STATUS - 2007/08

Expenditures and obligations of federal funds only

2/18/2008

TASK	PROGRAM YEAR	FHWA PL SCI SET-ASIDES																			
		1999/00	2000/01	2001/02	2002/03	2003/04	2004 - 07	2007/08		2008/09		TOTAL FUNDING		FUNDS EXPENDED		AVAILABLE BALANCE		PROJECT SPONSOR			
		PL	SPR	PL	SPR	PL	SPR	PL	SPR	PL	SPR	PL	SPR	PL	SPR	PL	SPR	PL	SPR		
NYS MPO Association Staff		\$213,721	\$245,000	\$208,279	\$0	\$0	\$0	\$210,000	\$0	\$230,000	\$0	\$1,225,000	\$0	\$894,179	\$0	\$330,821	\$0	\$0	\$0	GDTC	
Attitudinal & Preference Survey		\$105,000	\$0	\$0	\$0	\$0	\$0	\$0	\$0	\$0	\$0	\$105,000	\$0	\$105,000	\$0	\$0	\$0	\$0	\$0	GBNRTC	
Long Term Funding Needs		\$0	\$0	\$0	\$0	\$0	\$0	\$0	\$0	\$0	\$0	\$0	\$0	\$0	\$0	\$0	\$0	\$0	\$0	GDTC	
Transportation & Community Design - Phase I		\$0	\$0	\$125,000	\$0	\$0	\$0	\$0	\$0	\$0	\$0	\$125,000	\$0	\$121,080	\$0	\$3,910	\$0	\$0	\$0	GDTC	
	Phase II	\$0	\$100,000	\$0	\$0	\$0	\$0	\$0	\$0	\$0	\$0	\$100,000	\$0	\$17,478	\$0	\$82,522	\$0	\$0	\$0	GDTC	
Statewide Data Collection (high tech) - Phase I		\$0	\$0	\$51,542	\$0	\$0	\$0	\$0	\$0	\$0	\$0	\$51,542	\$0	\$51,542	\$0	\$0	\$0	\$0	\$0	BMTS	
Technical Services \ Speed Data Contract		\$0	\$0	\$0	\$0	\$0	\$0	\$0	\$0	\$0	\$0	\$0	\$0	\$0	\$0	\$0	\$0	\$0	\$0	ANGFC	
Travel Behavior Factors		\$0	\$0	\$100,000	\$0	\$0	\$0	\$0	\$0	\$0	\$0	\$100,000	\$0	\$84,197	\$0	\$5,803	\$0	\$0	\$0	GDTC	
Transit Supportive Development		\$0	\$0	\$165,000	\$0	\$0	\$0	\$0	\$0	\$0	\$0	\$190,000	\$0	\$190,000	\$0	\$0	\$0	\$0	\$0	PDCTC	
CMS Research		\$0	\$80,000	\$0	\$0	\$0	\$0	\$0	\$0	\$0	\$0	\$80,000	\$0	\$79,655	\$0	\$345	\$0	\$0	\$0	SMTC	
Staff Training (See Table on Page 2)		\$0	\$50,000	\$52,179	\$0	\$0	\$0	\$0	\$0	\$0	\$0	\$102,179	\$0	\$102,179	\$4,285	\$38,215	\$0	\$0	\$0	xxxxx	
Innovative Approaches to Plan Implementation		\$0	\$75,000	\$0	\$0	\$0	\$0	\$0	\$0	\$0	\$0	\$75,000	\$0	\$52,696	\$0	\$22,304	\$0	\$0	\$0	GBNRTC	
Dev. Of Post Procs. For Travel Demand Modeling		\$0	\$0	\$0	\$0	\$0	\$0	\$0	\$0	\$0	\$0	\$0	\$0	\$0	\$0	\$0	\$0	\$0	\$0	GDTC	
RTP Financial Planning		\$0	\$0	\$0	\$0	\$0	\$0	\$2,500	\$42,500	\$0	\$0	\$2,500	\$42,500	\$0	\$0	\$2,500	\$0	\$0	\$0	GDTC	
Public Transit-Human Services Transp. Plan		\$0	\$0	\$0	\$0	\$0	\$0	\$0	\$0	\$0	\$0	\$0	\$0	\$0	\$0	\$0	\$0	\$0	\$0	OCTC	
NYS Metropolitan Planning Self Assessment		\$0	\$0	\$0	\$0	\$0	\$0	\$50,000	\$50,000	\$0	\$0	\$50,000	\$0	\$0	\$0	\$50,000	\$0	\$0	\$0	BMTS	
Project Data System		\$0	\$0	\$0	\$0	\$0	\$0	\$0	\$0	\$0	\$0	\$37,500	\$41,250	\$37,500	\$41,250	\$0	\$0	\$0	\$0	NYMTC	
Mitigation Cost Sharing		\$0	\$0	\$0	\$0	\$0	\$0	\$12,500	\$0	\$0	\$0	\$32,500	\$45,000	\$45,000	\$45,000	\$0	\$0	\$0	\$0	GDTC	
Software Standardization for Visualization/Publishing		\$0	\$0	\$50,000	\$0	\$0	\$0	\$0	\$0	\$0	\$0	\$50,000	\$0	\$50,000	\$0	\$0	\$0	\$0	\$0	ANGFC	
Future Transp. Revenues Beyond State/Federal		\$0	\$0	\$0	\$0	\$0	\$0	\$0	\$0	\$0	\$0	\$0	\$0	\$0	\$0	\$0	\$0	\$0	\$0	GBNRTC	
	OBLIGATED	\$318,721	\$550,000	\$750,000	\$0	\$120,000	\$0	\$120,000	\$0	\$120,000	\$0	\$300,000	\$185,000	\$300,000	\$185,250	\$2,338,721	\$371,250	\$1,518,016	\$4,285	\$820,705	\$366,965
	UNOBLIGATED	\$0	\$0	\$0	\$0	\$0	\$0	\$0	\$0	\$0	\$0	\$0	\$0	\$0	\$0	\$0	\$0	\$0	\$0	\$0	\$0
TOTAL		\$318,721	\$550,000	\$750,000	\$0	\$120,000	\$0	\$120,000	\$0	\$120,000	\$0	\$300,000	\$185,000	\$300,000	\$185,250	\$2,338,721	\$371,250	\$1,518,016	\$4,285	\$820,705	\$366,965

FIA MPP SCI SET-ASIDES

TASK	PROGRAM YEAR	TOTAL FUNDING												FUNDS EXPENDED		AVAILABLE BALANCE		PROJECT SPONSOR			
		1999/00	2000/01	2001/02	2002/03	2003/04	2004 - 2007	MPP	SPR	MPP	SPR	MPP	SPR	MPP	SPR	MPP	SPR				
NYS MPO Association Staff		\$0	\$0	\$0	\$0	\$0	\$0	\$0	\$0	\$0	\$0	\$0	\$0	\$0	\$0	\$0	\$0	\$0	\$0	\$0	GDTC
Attitudinal & Preference Survey		\$0	\$0	\$0	\$0	\$0	\$0	\$0	\$0	\$0	\$0	\$0	\$0	\$0	\$0	\$0	\$0	\$0	\$0	\$0	GBNRTC
Long Term Funding Needs		\$0	\$49,997	\$100,000	\$0	\$0	\$0	\$0	\$0	\$0	\$0	\$149,997	\$0	\$149,997	\$0	\$0	\$0	\$0	\$0	\$0	GDTC
Transportation & Community Design - Phase I		\$0	\$0	\$0	\$0	\$0	\$0	\$0	\$0	\$0	\$0	\$0	\$0	\$0	\$0	\$0	\$0	\$0	\$0	\$0	GDTC
	Phase II	\$0	\$0	\$0	\$0	\$0	\$0	\$0	\$0	\$0	\$0	\$0	\$0	\$0	\$0	\$0	\$0	\$0	\$0	\$0	GDTC
Statewide Data Collection (high tech) - Phase I		\$0	\$50,000	\$36,985	\$0	\$0	\$0	\$0	\$0	\$0	\$0	\$86,985	\$0	\$86,985	\$0	\$0	\$0	\$0	\$0	\$0	GTC
Technical Services \ Speed Data Contract		\$0	\$0	\$0	\$0	\$0	\$0	\$0	\$0	\$0	\$0	\$50,000	\$0	\$50,000	\$0	\$0	\$0	\$0	\$0	\$0	ANGFC
Travel Behavior Factors		\$0	\$0	\$0	\$0	\$0	\$0	\$0	\$0	\$0	\$0	\$0	\$0	\$0	\$0	\$0	\$0	\$0	\$0	\$0	GDTC
Transit Supportive Development		\$0	\$0	\$0	\$0	\$0	\$0	\$0	\$0	\$0	\$0	\$0	\$0	\$0	\$0	\$0	\$0	\$0	\$0	\$0	PDCTC
CMS Research		\$0	\$0	\$0	\$0	\$0	\$0	\$0	\$0	\$0	\$0	\$0	\$0	\$0	\$0	\$0	\$0	\$0	\$0	\$0	SMTC
Staff Training (See Table on Page 2)		\$0	\$100,000	\$101,473	\$0	\$17,930	\$0	\$121,241	\$0	\$10,563	\$0	\$351,207	\$0	\$219,403	\$0	\$131,804	\$0	\$0	\$0	\$0	xxxxx
Innovative Approaches to Plan Implementation		\$0	\$0	\$0	\$0	\$0	\$0	\$0	\$0	\$0	\$0	\$0	\$0	\$0	\$0	\$0	\$0	\$0	\$0	\$0	GBNRTC
Dev. Of Post Procs. For Travel Demand Modeling		\$0	\$0	\$0	\$0	\$0	\$0	\$0	\$0	\$0	\$0	\$0	\$0	\$0	\$0	\$0	\$0	\$0	\$0	\$0	GDTC
RTP Financial Planning		\$0	\$0	\$0	\$0	\$0	\$0	\$40,000	\$0	\$0	\$0	\$40,000	\$0	\$0	\$0	\$40,000	\$0	\$0	\$0	\$0	GDTC
Available for Reoprogaming		\$0	\$0	\$0	\$0	\$0	\$0	\$17,500	\$0	\$0	\$0	\$17,500	\$0	\$0	\$0	\$17,500	\$0	\$0	\$0	\$0	OCTC
NYS Metropolitan Planning Self Assessment		\$0	\$0	\$0	\$0	\$0	\$0	\$0	\$0	\$0	\$0	\$0	\$0	\$0	\$0	\$0	\$0	\$0	\$0	\$0	BMTS
Project Data System		\$0	\$0	\$0	\$0	\$0	\$0	\$0	\$0	\$0	\$0	\$3,750	\$0	\$3,750	\$0	\$0	\$0	\$0	\$0	\$0	NYMTC
Mitigation Cost Sharing		\$0	\$0	\$0	\$0	\$0	\$0	\$0	\$0	\$0	\$0	\$0	\$0	\$0	\$0	\$0	\$0	\$0	\$0	\$0	GDTC
Software Standardization for Visualization/Publishing		\$0	\$0	\$0	\$0	\$0	\$0	\$0	\$0	\$0	\$0	\$0	\$0	\$0	\$0	\$0	\$0	\$0	\$0	\$0	ANGFC
Future Transp. Revenues Beyond State/Federal		\$0	\$0	\$0	\$0	\$0	\$0	\$0	\$0	\$0	\$0	\$50,000	\$0	\$50,000	\$0	\$0	\$0	\$0	\$0	\$0	GBNRTC
	OBLIGATED	\$0	\$199,997	\$238,458	\$0	\$17,930	\$0	\$178,741	\$0	\$114,313	\$0	\$749,439	\$0	\$456,385	\$0	\$293,054	\$0	\$0	\$0	\$0	\$0
	UNOBLIGATED	\$0	\$3	\$0	\$0	\$0	\$0	\$0	\$0	\$0	\$0	\$3	\$0	\$0	\$0	\$3	\$0	\$0	\$0	\$0	\$0
TOTAL		\$0	\$200,000	\$238,458	\$0	\$17,930	\$0	\$178,741	\$0	\$114,313	\$0	\$749,442	\$0	\$456,385	\$0	\$293,057	\$0	\$0	\$0	\$0	\$0

\* From Fin 421 reimbursements requests received by NYS DOT through 10/10/07

## 2008 - 2010 UPWP PROGRAM OUTLINE

**THIS TABLE IS FOR INFORMATIONAL PURPOSES ONLY. THE INDICATED BREAKDOWN OF ESTIMATED STAFF/CONTRACTUAL ASSIGNMENTS AND BUDGETS ARE SUBJECT TO MODIFICATION AS NEEDED.**

ID	Category	2008-2009			2009-2010			Notes
		Project Total	Staff & Operating Expense Budget	Contractual Budget	Project Total	Staff & Operating Expense Budget	Contractual Budget	
<b>1.</b>	<b>Program Administration and Support (44.21.00)</b>							
A.	General Administration	\$225,000	\$160,000	\$65,000	\$230,000	\$165,000	\$65,000	Contractual for Host Agency Agreement.
B.	Professional Services - Miscellaneous	\$5,000	\$0	\$5,000	\$5,783	\$0	\$5,783	Contractual for Miscellaneous Consultant Services as necessary.
C.	Public Participation	\$20,000	\$20,000	\$0	\$25,000	\$20,000	\$5,000	
D.	SAFETEA-LU - Miscellaneous	\$5,000	\$5,000	\$0	\$5,000	\$5,000	\$0	For SAFETEA LU compliance
E.	UPWP Previous Year Closeouts	\$9,000	\$9,000	\$0	\$9,000	\$9,000	\$0	
F.	UPWP Maintenance and Development	\$10,000	\$10,000	\$0	\$10,000	\$10,000	\$0	
	<b>Total Program Administration &amp; Support</b>	<b>\$274,000</b>	<b>\$204,000</b>	<b>\$70,000</b>	<b>\$284,783</b>	<b>\$209,000</b>	<b>\$75,783</b>	
<b>2.</b>	<b>Short-Range Transportation Planning (44.24.00)</b>							
A.	Census Data Compilation and/or Analysis	\$7,500	\$7,500	\$0	\$7,500	\$7,500	\$0	
B.	Data Collection, Compilation and/or Analysis	\$37,000	\$12,000	\$25,000	\$20,000	\$20,000	\$0	Contractual for Traffic Counts as necessary.
C.	Functional Classification System Review	\$4,000	\$4,000	\$0	\$4,000	\$4,000	\$0	
D.	Geographic Information Systems	\$55,000	\$55,000	\$0	\$55,000	\$55,000	\$0	Includes funds to provide GIS services to Member Agencies.
	<b>Total Short-Range Transportation Planning</b>	<b>\$103,500</b>	<b>\$78,500</b>	<b>\$25,000</b>	<b>\$86,500</b>	<b>\$86,500</b>	<b>\$0</b>	
<b>3.</b>	<b>Long-Range Transportation Planning (44.23.02)</b>							
A.	Air Quality, Conformity and Energy	\$22,000	\$22,000	\$0	\$22,000	\$22,000	\$0	
B.	Air/Water Planning	\$5,000	\$5,000	\$0	\$5,000	\$5,000	\$0	
C.	Bicycle/Pedestrian Planning	\$32,000	\$22,000	\$10,000	\$22,000	\$22,000	\$0	Bicycle Suitability Map Update.
D.	Bridge and Pavement Condition Management System (BPCMS)	\$10,000	\$10,000	\$0	\$10,000	\$10,000	\$0	
E.	Clay/Cicero Rt. 31 Transportation Study	\$27,000	\$27,000	\$0	\$10,000	\$10,000	\$0	
F.	Congestion Management Process (CMP)	\$18,000	\$18,000	\$0	\$18,000	\$18,000	\$0	
G.	CSX Intermodal Transportation Study	\$100,000	\$20,000	\$80,000	\$30,000	\$5,000	\$25,000	Contractual for Consultant Services as necessary.
H.	University Hill Bike Network Project	\$35,000	\$20,000	\$15,000	\$5,000	\$5,000	\$0	
I.	Downer Street Corridor Study	\$82,000	\$7,000	\$75,000	\$10,000	\$10,000	\$0	
J.	Emergency Travel Study	\$82,000	\$7,000	\$75,000	\$80,000	\$5,000	\$75,000	Project for SOCPA, for completion over 3 years.
K.	Environmental Justice	\$10,000	\$10,000	\$0	\$10,000	\$10,000	\$0	
L.	I-81 Public Participation Project	\$150,000	\$25,000	\$125,000	\$150,000	\$25,000	\$125,000	Contractual for Consultant Services as necessary.
M.	I-81 Travel Demand Modeling Project	\$110,000	\$10,000	\$100,000	\$95,000	\$7,000	\$88,000	
N.	MPO Area Regional Planning Initiatives	\$20,000	\$20,000	\$0	\$20,000	\$20,000	\$0	
O.	Long-Range Transportation Plan	\$45,000	\$45,000	\$0	\$50,000	\$50,000	\$0	Contractual for Modeling Assistance as necessary.
P.	Northern MPA Planning	\$9,000	\$9,000	\$0	\$9,000	\$9,000	\$0	
Q.	Operations and Integration	\$10,000	\$10,000	\$0	\$10,000	\$10,000	\$0	
R.	Rail, Truck and Transit Planning	\$50,000	\$50,000	\$0	\$50,000	\$50,000	\$0	Complete Human Services Transit Plan.
S.	Traffic Safety	\$12,000	\$12,000	\$0	\$12,000	\$12,000	\$0	
T.	Transportation/Land Use Educational Outreach	\$12,000	\$12,000	\$0	\$12,000	\$12,000	\$0	
U.	Travel Demand Modeling	\$80,000	\$50,000	\$30,000	\$55,000	\$55,000	\$0	Contractual for Modeling Assistance as necessary for staff assistance.
V.	University Hill Transportation Study Phase II: Feasibility Study for Park and Ride Initiative	\$71,000	\$6,000	\$65,000	\$0	\$0	\$0	New Project for the MDA.
W.	University Hill Transportation Study Phase II: Feasibility Study for Short Term Transportation Recommendations	\$88,000	\$8,000	\$80,000	\$0	\$0	\$0	New Project for the City of Syracuse.
X.	Carrier Site Access Transportation Study	\$75,000	\$5,000	\$70,000				
Y.	Unallocated Funds for 2009-2010 planning efforts to be allocated at annual update cycle.	\$0	\$0	\$0	\$88,000	\$88,000	\$0	To be determined prior to 2009-2010 program. This total does not include any amounts to be requested from the FHWA carryover funds. See operating budget for carryover balances.
		<b>\$1,155,000</b>	<b>\$430,000</b>	<b>\$725,000</b>	<b>\$773,000</b>	<b>\$460,000</b>	<b>\$313,000</b>	
<b>4.</b>	<b>Transportation Improvement Program (TIP) (44.25.00)</b>							
A.	TIP Development & Maintenance	\$25,000	\$25,000	\$0	\$30,000	\$30,000	\$0	
	<b>Total Transportation Improvement Program</b>	<b>\$25,000</b>	<b>\$25,000</b>	<b>\$0</b>	<b>\$30,000</b>	<b>\$30,000</b>	<b>\$0</b>	
<b>5.</b>	<b>Other Activities (44.27.00)</b>							
A.	Miscellaneous Activities and Special Technical Assistance	\$20,420	\$20,420	\$0	\$19,962	\$19,962	\$0	
	<b>Total Other Activities</b>	<b>\$20,420</b>	<b>\$20,420</b>	<b>\$0</b>	<b>\$19,962</b>	<b>\$19,962</b>	<b>\$0</b>	
	<b>Grand Total</b>	<b>\$1,577,920</b>	<b>\$757,920</b>	<b>\$820,000</b>	<b>\$1,194,245</b>	<b>\$805,462</b>	<b>\$388,783</b>	

# **UNIFIED PLANNING WORK PROGRAM**

**FY 2008-2010**

## **1. PROGRAM ADMINISTRATION and SUPPORT**

**1A General Administration**

**1B Professional Services - Miscellaneous**

**1C Public Participation**

**1D SAFETEA-LU - Miscellaneous**

**1E UPWP Previous Year Closeouts**

**1F UPWP Maintenance and Development**



<b>PROJECT NO:</b>	<b>1A</b>		
<b>PROJECT TITLE:</b>	<b>General Administration</b>		
<b>OBJECTIVE:</b>			
To initiate and properly manage the transportation planning process, ensuring that it is continuous, cooperative, and comprehensive, and in compliance with applicable State and Federal laws and regulations.			
<b>METHODOLOGY:</b>			
The SMTC provides staff support to the Policy, Executive and Planning Committees, in addition to other permanent and ad-hoc committees. The Staff will implement the work tasks as contained in this UPWP. Other administrative activities include, but are not limited to the following:			
<ul style="list-style-type: none"> <li>● Act as local liaison to NYSDOT, CNYRTA, CNY RPDB, and other transportation related agencies to ensure coordination;</li> <li>● Provide administrative support and technical assistance to the Policy, Executive, and Planning Committees, as well as other permanent and ad-hoc committees, as needed;</li> <li>● Maintain financial records of all revenues and expenditures;</li> <li>● Prepare and distribute meeting notices and agenda packages for all SMTC committees;</li> <li>● Prepare certification documentation, agreements, resolutions, memoranda of understanding (MOU's), etc.;</li> <li>● Review and modify the Operations Plan as a result of modifications to the Metropolitan Planning Area and Urban Area Boundaries, as necessary;</li> <li>● Attend NYSDOT, FHWA, FTA, and MPO training sessions and other necessary workshops and meetings as appropriate;</li> <li>● Maintain agreements between local governmental agencies and the MPO;</li> <li>● Prepare and distribute quarterly progress reports and other documents as required;</li> <li>● Interact/participate in NYS AMPO, ITE, APA, and other professional affiliations, and allow for appropriate resources, travel and training as necessary;</li> <li>● Provide funds for the purchase and maintenance of computer hardware and software to support the MPO planning program and related activities, including network maintenance;</li> <li>● Continue the SMTC's commitment to comply with Title VI of the Civil Rights Act of 1964;</li> <li>● Continue the SMTC's commitment to ensure that all of their programs and activities sufficiently address Environmental Justice principles and procedures, as appropriate; and</li> <li>● Continue to comply with the NYSDOT's Disadvantaged Business Enterprise Program.</li> </ul>			
<b>END PRODUCT:</b>			
The ability to operate the agency as a functional entity; the ability to meet federal and state requirements; the ability to meet local government expectations; Committee Documentation – including: reports, meeting minutes, committee mailings, and related materials; staff involvement in relevant organizations and activities; and adequate computer resources to meet the MPO planning activity requirements.			
<b>Project Sponsor / Participating Agencies:</b>		<b>Funding Sources:</b>	
<b>Sponsor:</b> SMTC		<u>2008-2009</u>	<u>2009-2010</u>
	FHWA (PL)	\$ 191,250	\$ 195,500
	FTA (Sec. 5303)	\$ 33,750	\$ 34,500
	<b>TOTAL</b>	<b>\$ 225,500</b>	<b>\$ 230,000</b>
<b>Participating Agencies:</b> SMTC, CNY RPDB, Other Agencies as Appropriate		<b>\$455,000</b>	

<b>PROJECT NO:</b>	<b>1B</b>		
<b>PROJECT TITLE:</b>	<b>Professional Services - Miscellaneous</b>		
<b>OBJECTIVE:</b>			
<p>To allow Central Staff to utilize the SMTC’s “on-call” consultants for specific minor engineering, planning, training or other necessary services as needed in support of the various annual planning activities at the SMTC.</p>			
<b>METHODOLOGY:</b>			
<p>This task provides access to expert professional services when required by Central Staff in support of the various annual planning activities. Specifically, it allows the SMTC to retain the services of one of its “on-call” consultants to assist with specific technical activities associated with a given project where current staff expertise may not be sufficient.</p> <p>Examples include, but are not limited to:</p> <ul style="list-style-type: none"> <li>● Selected Traffic / Transportation Engineering Activities;</li> <li>● Selected Travel Demand Modeling Activities;</li> <li>● Selected Transportation Planning Activities; and</li> <li>● Other skills that may be necessary to support the UPWP but may be currently absent at the staff level.</li> </ul>			
<b>END PRODUCT:</b>			
<p>Professional services to the Central Staff in support of the various planning activities outlined in the 2008-2010 UPWP.</p>			
<b>Project Sponsor / Participating Agencies:</b>		<b>Funding Sources:</b>	
<p><b>Sponsor:</b> SMTC</p> <p><b>Participating Agencies:</b> SMTC, CNYRPDB</p>	FHWA (PL)	<u>2008-2009</u> \$4,750	<u>2009-2010</u> \$4,106
	FTA (Sec. 5303)	\$ 250	\$1,677
	TOTAL	\$5,000	\$5,783

<b>PROJECT NO:</b>	<b>1C</b>		
<b>PROJECT TITLE:</b>	<b>Public Participation</b>		
<b>OBJECTIVE:</b>			
<p>To enhance the SMTC's transportation planning process with greater opportunities for public participation, input, involvement, and exposure.</p>			
<b>METHODOLOGY:</b>			
<p>This task generally provides for the dissemination of information to the public about the transportation planning program. It also covers receiving public comment and input on transportation planning activities through public information meetings both hosted and attended by the SMTC.</p> <p>Specifically, this task includes the development of strategies for improving the public's access to the MPO planning process, including all stages of the development of MPO planning documents and studies.</p> <p>As part of this task, the SMTC will continue to ensure that the principles of Environmental Justice, including minority and low-income communities, are included and represented in all public outreach efforts.</p> <p>The techniques for the dissemination of information include, but are not limited to the following:</p> <ul style="list-style-type: none"> <li>● Newsletters;</li> <li>● Brochures and flyers;</li> <li>● Study reports and technical memoranda;</li> <li>● Public information meetings/workshops and conferences;</li> <li>● Media releases, press articles, and paid advertisements/features;</li> <li>● Direct contact with public/citizens mailing lists;</li> <li>● Transportation "fairs", exhibits or expositions; and</li> <li>● SMTC Web site (<a href="http://www.smtcmpo.org">www.smtcmpo.org</a>).</li> </ul> <p>Public participation opportunities (public input) include:</p> <ul style="list-style-type: none"> <li>● Public meetings/workshops;</li> <li>● Task Forces, focus groups;</li> <li>● Study Advisory Committees and Stakeholders database; and</li> <li>● Surveys, questionnaires, comment cards, etc.</li> </ul>			
<b>END PRODUCT:</b>			
<p>Public Participation opportunities/activities, including SMTC newsletters, reports, press releases, maps, and slide presentations, web site maintenance, meetings, workshops, etc.</p>			
<b>Project Sponsor / Participating Agencies:</b>		<b>Funding Sources:</b>	
<b>Sponsor:</b> SMTC  <b>Participating Agencies:</b> SMTC, SMTC Member Agencies, Other Agencies as Appropriate	FHWA (PL)	<i>2008-2009</i> \$15,000	<i>2009-2010</i> \$18,750
	FTA (Sec. 5303)	\$ 5,000	\$ 6,250
	TOTAL	\$20,000	\$25,000
		\$45,000	

<b>PROJECT NO:</b>	<b>1D</b>																
<b>PROJECT TITLE:</b>	<b>SAFETEA-LU - Miscellaneous</b>																
<b>OBJECTIVE:</b>																	
<p>To provide funds to allow the Central Staff to comply with the Safe, Accountable, Flexible, Efficient Transportation Equity Act: A Legacy for Users (SAFETEA-LU) legislation and to educate themselves on the regulations and requirements.</p>																	
<b>METHODOLOGY:</b>																	
<p>With the passage of the transportation bill, “Safe, Accountable, Flexible, Efficient Transportation Equity Act: A Legacy for Users” (SAFETEA-LU), there are specific regulations and requirements for Metropolitan Transportation Planning. The Federal Highway Administration, the Federal Transit Administration and the New York State Department of Transportation, as well as many other professional organizations, are in the process of drafting various guidance to assist MPO’s in interpreting and implementing the new regulations.</p>																	
<b>END PRODUCT:</b>																	
<p>Improved knowledge of the Central Staff regarding the regulations and requirements of SAFETEA-LU as well as required continued compliance.</p>																	
<b>Project Sponsor / Participating Agencies:</b>		<b>Funding Sources:</b>															
<p><b>Sponsor:</b> SMTC</p> <p><b>Participating Agencies:</b> SMTC, SMTC Member Agencies, Other Agencies as Appropriate</p>		<table border="1"> <thead> <tr> <th></th> <th><u>2008-2009</u></th> <th><u>2009-2010</u></th> </tr> </thead> <tbody> <tr> <td>FHWA (PL)</td> <td>\$ 2,500</td> <td>\$ 3,750</td> </tr> <tr> <td>FTA (Sec. 5303)</td> <td>\$ 2,500</td> <td>\$ 1,250</td> </tr> <tr> <td>TOTAL</td> <td>\$ 5,000</td> <td>\$ 5,000</td> </tr> <tr> <td></td> <td colspan="2" style="text-align: center;">\$ 10,000</td> </tr> </tbody> </table>		<u>2008-2009</u>	<u>2009-2010</u>	FHWA (PL)	\$ 2,500	\$ 3,750	FTA (Sec. 5303)	\$ 2,500	\$ 1,250	TOTAL	\$ 5,000	\$ 5,000		\$ 10,000	
	<u>2008-2009</u>	<u>2009-2010</u>															
FHWA (PL)	\$ 2,500	\$ 3,750															
FTA (Sec. 5303)	\$ 2,500	\$ 1,250															
TOTAL	\$ 5,000	\$ 5,000															
	\$ 10,000																

<b>PROJECT NO:</b>	<b>1E</b>		
<b>PROJECT TITLE:</b>	<b>UPWP Previous Year Closeouts</b>		
<b>OBJECTIVE:</b>			
To provide a task, and thus a billing code, for closing out various UPWP activities from the previous program year.			
<b>METHODOLOGY:</b>			
At the end of each program year, there are often various administrative tasks that need to be completed in order to officially close out a project. Such activities typically include the reproduction and distribution of Final Reports that were approved prior to the close of the program year. Since there are no planning activities remaining, the project is not carried over and therefore does not possess a billing code to charge these final administrative tasks.			
This task is included as a “catch-all” to cover the administrative tasks necessary to completely close out various projects from the previous program year.			
<b>END PRODUCT:</b>			
Completion of required minor tasks necessary to completely close out various projects/efforts from the previous program year.			
<b>Project Sponsor / Participating Agencies:</b>		<b>Funding Sources:</b>	
<b>Sponsor:</b> SMTC  <b>Participating Agencies:</b> SMTC, CNYRPDB		<u>2008-2009</u>	<u>2009-2010</u>
	FHWA (PL)	\$ 9,000	\$ 9,000
	FTA (Sec. 5303)	\$	\$
		\$	\$
	TOTAL	\$ 9,000	\$ 9,000
		\$ 18,000	

<b>PROJECT NO:</b>	<b>1F</b>																			
<b>PROJECT TITLE:</b>	<b>UPWP Maintenance and Development</b>																			
<b>OBJECTIVE:</b>																				
<p>Maintain the 2008-2010 Unified Planning Work Program (UPWP) as necessary and develop a subsequent work program accordingly.</p>																				
<b>METHODOLOGY:</b>																				
<p>This task includes all necessary work required to process amendments to the 2008-2010 UPWP.</p> <p>In addition, this task will allow for an amendment to the 2008-2010 UPWP during the 2008-2009 program year to finalize the program for the 2009-2010 year as required by federal regulations.</p> <p>The UPWP indicates local, state, and federal funding of the UPWP work tasks and identifies the participating agencies for completing the work. The UPWP will be developed according to measures deemed necessary to ensure a “3C” planning process, one that is <u>c</u>ontinuing, <u>c</u>ooperative, and <u>c</u>omprehensive.</p>																				
<b>END PRODUCT:</b>																				
<p>Maintenance of and amendments to the 2008-2010 UPWP as necessary and appropriate and the development of the 2009-2010 UPWP Amendment.</p>																				
<b>Project Sponsor / Participating Agencies:</b>		<b>Funding Sources:</b>																		
<p><b>Sponsor:</b> SMTC</p> <p><b>Participating Agencies:</b> SMTC, SMTC Member Agencies, Other Agencies as Appropriate</p>		<table border="1"> <thead> <tr> <th></th> <th><u>2008-2009</u></th> <th><u>2009-2010</u></th> </tr> </thead> <tbody> <tr> <td>FHWA (PL)</td> <td>\$ 9,500</td> <td>\$ 8,500</td> </tr> <tr> <td>FTA (Sec. 5303)</td> <td>\$ 500</td> <td>\$ 1,500</td> </tr> <tr> <td></td> <td>\$ 10,000</td> <td>\$ 10,000</td> </tr> <tr> <td><b>TOTAL</b></td> <td></td> <td></td> </tr> <tr> <td></td> <td colspan="2" style="text-align: center;">\$20,000</td> </tr> </tbody> </table>		<u>2008-2009</u>	<u>2009-2010</u>	FHWA (PL)	\$ 9,500	\$ 8,500	FTA (Sec. 5303)	\$ 500	\$ 1,500		\$ 10,000	\$ 10,000	<b>TOTAL</b>				\$20,000	
	<u>2008-2009</u>	<u>2009-2010</u>																		
FHWA (PL)	\$ 9,500	\$ 8,500																		
FTA (Sec. 5303)	\$ 500	\$ 1,500																		
	\$ 10,000	\$ 10,000																		
<b>TOTAL</b>																				
	\$20,000																			

**UNIFIED PLANNING WORK PROGRAM**

**FY 2008-2010**

**2. SHORT-RANGE TRANSPORTATION PLANNING**

**2A Census Data Compilation, and/or Analysis**

**2B Data Collection, Compilation, and/or Analysis**

**2C Functional Classification System Review**

**2D Geographic Information Systems (GIS)**

<b>PROJECT NO:</b>	<b>2A</b>		
<b>PROJECT TITLE:</b>	<b>Census Data Compilation and/or Analysis</b>		
<b>OBJECTIVE:</b>			
<p>To continue to utilize the Census Transportation Planning Package and U.S. Census Data accordingly. Additionally, to provide Census data, information and analysis as input into appropriate SMTC planning studies. This effort supports Long Range Transportation Planning Activities, Travel Demand Modeling, Environmental Justice, and general transportation planning for the MPO.</p>			
<b>METHODOLOGY:</b>			
<p>This UPWP task is an ongoing activity of the SMTC. It allows for staff to utilize various Census data for Long Range Transportation Planning Activities, Travel Demand Modeling, Environmental Justice, and general transportation planning completed by the MPO. Additionally, member agencies frequently request that the SMTC create customized census data products for their needs. This project allows for SMTC staff to complete those requests.</p>			
<b>END PRODUCT:</b>			
<p>A valuable data set to support the varied planning activities of the MPO.</p>			
<b>Project Sponsor / Participating Agencies:</b>		<b>Funding Sources:</b>	
<p><b>Sponsor:</b> SMTC</p> <p><b>Participating Agencies:</b> SMTC, Other Agencies as Appropriate</p>		<u>2008-2009</u>	
	FHWA (PL)	\$ 6,375	<u>2009-2010</u>
	FTA (Sec. 5303)	\$ 1,125	\$ 7,125
		\$ 7,500	\$ 375
	TOTAL		\$ 7,500
			\$15,000



<b>PROJECT NO:</b>	<b>2B</b>																
<b>PROJECT TITLE:</b>	<b>Data Collection, Compilation, and/or Analysis</b>																
<b>OBJECTIVE:</b>																	
To collect, analyze and utilize various forms of data that assist in the everyday planning operation of the Metropolitan Planning Organization (MPO).																	
<b>METHODOLOGY:</b>																	
This UPWP task involves the following subcategories:																	
<ul style="list-style-type: none"> <li><b>i. Transit Data Collection:</b> The collection of transit ridership, scheduling and routing information by both the Central New York Regional Transportation Authority (CNYRTA) and by the SMTC to fill project-specific data needs. It is intended that the CNYRTA will collect this data and provide it to the SMTC in a timely manner. If the CNYRTA is unable to provide the SMTC with the requested data, the SMTC will utilize the funds available for this category to obtain the data elsewhere. The SMTC will provide CNYRTA with project-specific data needs as requested.</li> <li><b>ii. Vehicle Data Collection:</b> The collection of traffic count data and turning movement count data required in support of the SMTC's planning activities. This will be done in accordance with the adopted Traffic Count Protocol procedures at the SMTC. Additionally, this subcategory will include the ongoing effort of maintaining a central database of vehicle traffic counts for the MPO area.</li> <li><b>iii. Other Information:</b> Other data as necessary in support of the planning activities of the SMTC.</li> </ul>																	
<b>END PRODUCT:</b>																	
The end product is transit, vehicular and other data sets as necessary. This data is used in the various multi-modal studies and activities undertaken by the SMTC.																	
<b>Project Sponsor / Participating Agencies:</b>		<b>Funding Sources:</b>															
<b>Sponsor:</b> SMTC  <b>Participating Agencies:</b> SMTC, SMTC Member Agencies, Other Agencies as Appropriate		<table border="1"> <thead> <tr> <th></th> <th><i>2008-2009</i></th> <th><i>2009-2010</i></th> </tr> </thead> <tbody> <tr> <td>FHWA (PL)</td> <td>\$ 35,150</td> <td>\$ 18,000</td> </tr> <tr> <td>FTA (Sec. 5303)</td> <td>\$ 1,850</td> <td>\$ 2,000</td> </tr> <tr> <td><b>TOTAL</b></td> <td><b>\$ 37,000</b></td> <td><b>\$ 20,000</b></td> </tr> <tr> <td></td> <td colspan="2" style="text-align: center;"><b>\$ 57,000</b></td> </tr> </tbody> </table>		<i>2008-2009</i>	<i>2009-2010</i>	FHWA (PL)	\$ 35,150	\$ 18,000	FTA (Sec. 5303)	\$ 1,850	\$ 2,000	<b>TOTAL</b>	<b>\$ 37,000</b>	<b>\$ 20,000</b>		<b>\$ 57,000</b>	
	<i>2008-2009</i>	<i>2009-2010</i>															
FHWA (PL)	\$ 35,150	\$ 18,000															
FTA (Sec. 5303)	\$ 1,850	\$ 2,000															
<b>TOTAL</b>	<b>\$ 37,000</b>	<b>\$ 20,000</b>															
	<b>\$ 57,000</b>																

<b>PROJECT NO:</b>	<b>2C</b>		
<b>PROJECT TITLE:</b>	<b>Functional Classification System Review</b>		
<b>OBJECTIVE:</b>			
To conduct a review, and make changes if necessary, of the MPO functional classification system to ensure that it is consistent and coordinated with the recently modified functional classification in the City of Syracuse.			
<b>METHODOLOGY:</b>			
The SMTC has recently completed a comprehensive review of the entire street network in the City of Syracuse and will be making recommendations for the reclassification of various streets.			
The next phase of this project is to examine the surrounding MPO area as some of the changes made to the functional classification within the City will most likely have implications on the surrounding area. Changes outside of the City may be necessary for a variety of reasons including continuity, functionality, and distribution of the percentage of functional classification types within the system.			
This process will be led by the SMTC staff, however it will involve extensive input from appropriate entities and member agencies including, but not limited to the City of Syracuse, the New York State Department of Transportation, and the Onondaga County Department of Transportation.			
The majority of this task was completed in previous years, however, some funding is being programmed for the 2008-2010 program years to complete and wrap-up the project.			
<b>END PRODUCT:</b>			
A revised functional classification system for the entire MPO area.			
<b>Project Sponsor / Participating Agencies:</b>		<b>Funding Sources:</b>	
<b>Sponsor:</b> SMTC		<i>2008-2009</i>	<i>2009-2010</i>
<b>Participating Agencies:</b> SMTC, SMTC Member Agencies		FHWA (PL) \$4,000	\$4,000
		FTA (Sec. 5303) \$ 0	\$ 0
		TOTAL \$4,000	\$4,000
		\$ 8,000	

<b>PROJECT NO:</b>	<b>2D</b>		
<b>PROJECT TITLE:</b>	<b>Geographic Information Systems (GIS)</b>		
<b>OBJECTIVE:</b>			
To manage the data and software requirements necessary for maintaining and using the SMTC's Geographic Information System (GIS) to support the Metropolitan Planning Organization's (MPO) planning activities.			
<b>METHODOLOGY:</b>			
<p>The SMTC utilizes various transportation-related GIS files as part of routine planning and analysis. As additional information becomes available digitally from the SMTC's member agencies each year, the role of GIS is becoming pervasive.</p> <p>To fully allow the SMTC to utilize GIS in its work program, there are necessary enhancements and routine maintenance efforts that must be undertaken as part of its work program annually. These efforts will allow the SMTC to more fully utilize GIS in relation to vehicle traffic counts, transit ridership, pavement condition monitoring, functional classification, demographic analysis, linking of Travel Demand Model data to GIS data, and other related efforts. Additionally, GIS will be used for demographic analysis for the identification of specific locations within the MPO area in need of attention under the Environmental Justice initiative.</p> <p>Anticipated activities include:</p> <ul style="list-style-type: none"> <li>● Coordination with member agencies to ensure that the most recent data is being used;</li> <li>● File maintenance of the SMTC's GIS data layers;</li> <li>● Linking CTPP data with relevant SMTC GIS layers;</li> <li>● Continuing linking Vehicle Data Collection activities with the GIS database to allow for easy access to most up-to-date traffic counts for road segments (AADT);</li> <li>● Continue development of a GIS layer of turning movement count locations and data sheets to allow for easy access to turning movement count data sets; and</li> <li>● GIS data acquisition, maintenance, and manipulation as required in support of the various UPWP planning efforts that will utilize GIS data.</li> </ul> <p>Additional funds have been programmed for this task to allow the SMTC staff to complete GIS tasks for any of its member agencies on an as needed basis. This GIS support project would involve Central Staff providing member agencies with GIS products such as maps and associated spreadsheets on an as needed basis. The GIS maps would be produced for the member agency by request and reviewed by requesting agency.</p>			
<b>END PRODUCT:</b>			
Enhanced coordination between the SMTC and various Federal, State, and local agencies to allow for up-to-date GIS data and files. Additionally, enhanced data sets that support the SMTC's planning efforts and high quality cartographic products as required for various UPWP projects.			
<b>Project Sponsor / Participating Agencies:</b>		<b>Funding Sources:</b>	
<b>Sponsor:</b> SMTC		<i>2008-2009</i>	<i>2009-2010</i>
	FHWA (PL)	\$ 46,750	\$ 46,750
<b>Participating Agencies:</b> SMTC, SMTC Member Agencies	FTA (Sec. 5303)	\$ 8,250	\$ 8,250
	TOTAL	\$ 55,000	\$ 55,000
		\$ 110,000	

# UNIFIED PLANNING WORK PROGRAM

FY 2008-2010

## **3. LONG-RANGE TRANSPORTATION PLANNING**

- 3A Air Quality, Conformity and Energy**
- 3B Air/Water Planning**
- 3C Bicycle/Pedestrian Planning**
- 3D Bridge and Pavement Condition Management System (BPCMS)**
- 3E Clay/Cicero Rt. 31 Transportation Study**
- 3F Congestion Management Process(CMP)**
- 3G CSX Intermodal Transportation Study**
- 3H University Hill Bike Network Project**
- 3I Downer Street Corridor Study**
- 3J Emergency Travel Study**
- 3K Environmental Justice Analysis**
- 3L I-81 Public Participation Project**
- 3M I-81 Travel Demand Modeling**
- 3N MPO Regional Planning Initiatives**
- 3O Long-Range Transportation Plan**
- 3P Northern MPA Planning**
- 3Q Operations and Integration**
- 3R Rail, Truck and Transit Planning**
- 3S Traffic Safety**
- 3T Transportation/Land Use Educational Outreach**
- 3U Travel Demand Modeling**
- 3V University Hill Transportation Study Phase II: Feasibility Study for Park and Ride Initiative**
- 3W University Hill Transportation Study Phase II: Feasibility Study for Short Term Transportation Recommendations**
- 3X Carrier Site Access Transportation Study**
- 3Y Unallocated Funds for 2009-2010 planning efforts to be allocated at annual update**

<b>PROJECT NO:</b>	<b>3A</b>																
<b>PROJECT TITLE:</b>	<b>Air Quality, Conformity and Energy</b>																
<b>OBJECTIVE:</b>																	
<p>To continue to provide for air quality planning initiatives and activities that comply with the conformity requirements of the Clear Air Act Amendments of 1990, the New York State Energy Plan and the State Implementation Plan for Air Quality.</p>																	
<b>METHODOLOGY:</b>																	
<p>Activities continue to increase due to changes in the regulations governing air quality and transportation planning. Air quality activities are related to the Transportation Improvement Program (TIP) and Long Range Transportation Plan (LRTP) conformity determinations, Congestion Mitigation Air Quality (CMAQ) project-specific analysis as well as other projects and programs at the federal, state and local levels. The SMTC will continue to expand its cooperative relationship with all of the appropriate agencies to address the necessary requirements. These efforts are designed to enhance local ambient air quality as part of its overall strategy to meet Federal and State clean air regulations, promote public health, advance energy policy, and assist local development. Coordination and communications with the New York State Department of Environmental Conservation (NYSDEC) and the New York State Department of Transportation's Environmental Science Bureau will continue regarding the revision to the State Implementation Plan (SIP), which will ultimately result in a new maintenance plan, updated mobile source emission budgets, and require a redetermination of conformity for the SMTC TIP and LRTP.</p> <p>As experienced over the past year, the level of staff effort to address the numerous issues associated with this task increased immensely and it is anticipated that the level of staff effort, and staff skills will need to be expanded in the future.</p>																	
<b>END PRODUCT:</b>																	
<p>TIP and LRTP Conformity Analysis as well as ongoing adherence to all Federal and State programs and requirements relating to air quality, conformity and energy at the SMTC.</p>																	
<b>Project Sponsor / Participating Agencies:</b>		<b>Funding Sources:</b>															
<p><b>Sponsor:</b> SMTC</p> <p><b>Participating Agencies:</b> SMTC, SMTC Member Agencies, Other Agencies as Appropriate</p>		<table border="1"> <thead> <tr> <th></th> <th><i>2008-2009</i></th> <th><i>2009-2010</i></th> </tr> </thead> <tbody> <tr> <td>FHWA (PL)</td> <td>\$ 16,500</td> <td>\$ 16,500</td> </tr> <tr> <td>FTA (Sec. 5303)</td> <td>\$ 5,500</td> <td>\$ 5,000</td> </tr> <tr> <td>TOTAL</td> <td>\$ 22,000</td> <td>\$ 22,000</td> </tr> <tr> <td></td> <td colspan="2" style="text-align: center;">\$ 44,000</td> </tr> </tbody> </table>		<i>2008-2009</i>	<i>2009-2010</i>	FHWA (PL)	\$ 16,500	\$ 16,500	FTA (Sec. 5303)	\$ 5,500	\$ 5,000	TOTAL	\$ 22,000	\$ 22,000		\$ 44,000	
	<i>2008-2009</i>	<i>2009-2010</i>															
FHWA (PL)	\$ 16,500	\$ 16,500															
FTA (Sec. 5303)	\$ 5,500	\$ 5,000															
TOTAL	\$ 22,000	\$ 22,000															
	\$ 44,000																

<b>PROJECT NO:</b>	<b>3B</b>		
<b>PROJECT TITLE:</b>	<b>Air/Water Planning</b>		
<b>OBJECTIVE:</b>			
To include multi-modal transportation planning in the Metropolitan Planning Organization (MPO) process, in order to effectively address air and water transportation issues, for moving both people and freight, as appropriate.			
<b>METHODOLOGY:</b>			
<ul style="list-style-type: none"> <li>• Provide input and technical assistance from a multi-modal perspective to all SMTC transportation projects in order that air and water travel are given appropriate consideration to any given SMTC project;</li> <li>• Conduct data collection, identify and assess existing conditions, develop and evaluate alternatives and/or prepare recommendations as required;</li> <li>• Identify issues of concern within the Air/Water multi-modal arena for which a focused substantive transportation study may be appropriate;</li> <li>• Provide staff support to Air/Water multi-modal advisory committees and utilize, as appropriate, the committees as resources for providing input to specific multi-modal projects as well as multi-modal program development; and</li> <li>• Begin the process to update and reprint the SMTC Canal Services Brochure over the 2008-2010 cycle.</li> </ul>			
<b>END PRODUCT:</b>			
Maintenance of a multi-modal component in all SMTC transportation projects, and miscellaneous technical reports and memoranda as appropriate. A revised and reprinted Canalway Map.			
<b>Project Sponsor / Participating Agencies:</b>		<b>Funding Sources:</b>	
<b>Sponsor:</b> SMTC  <b>Participating Agencies:</b> SMTC, Other Agencies as Appropriate		<u>2008-2009</u>	<u>2009-2010</u>
	FHWA (PL)	\$ 5,000	\$ 5,000
	FTA (Sec. 5303)	\$ 0	\$ 0
	TOTAL	\$ 5,000	\$ 5,000
		\$ 10,000	

<b>PROJECT NO:</b>	<b>3C</b>
<b>PROJECT TITLE:</b>	<b>Bicycle/Pedestrian Planning</b>

**OBJECTIVE:**

To include multi-modal transportation planning in the Metropolitan Planning Organization (MPO) process, in order to effectively address bicycle and pedestrian transportation issues. Activities under this task will also contribute to improved air quality in the MPO area.

**METHODOLOGY:**

- Provide input and technical assistance from a multi-modal perspective to all SMTC transportation projects in order that bicycle and pedestrian travel are given appropriate consideration in any given SMTC project;
- Conduct data collection, identify and assess existing conditions, develop and evaluate alternatives and/or prepare recommendations as required;
- Identify issues of concern within the multi-modal arena for which a focused substantive transportation study may be appropriate;
- Provide staff support to multi-modal advisory committees and utilize, as appropriate, the committees as resources for providing input to specific multi-modal projects as well as multi-modal program development; and
- Revise, update and reprint the 2003 SMTC Bicycle Suitability Map over the 2008-2010 cycle.

**END PRODUCT:**

Maintenance of a multi-modal component in all SMTC transportation projects, and miscellaneous technical reports and memoranda. Revise, update and reprint the 2003 SMTC Bicycle Suitability Map for 2010.

<b>Project Sponsor / Participating Agencies:</b>	<b>Funding Sources:</b>	
<b>Sponsor:</b> SMTC	<i>2008-2009</i>	<i>2009-2010</i>
	FHWA (PL) \$ 28,800	\$ 19,800
<b>Participating Agencies:</b> SMTC, Other Agencies as Appropriate	FTA (Sec. 5303) \$ 3,200	\$ 2,200
	TOTAL \$ 32,000	\$ 22,000
	\$ 54,000	

<b>PROJECT NO:</b>	<b>3D</b>
<b>PROJECT TITLE:</b>	<b>Bridge and Pavement Condition Management System (BPCMS)</b>

**OBJECTIVE:**

Complete an annual working document for SMTC member agencies and staff on bridge and pavement conditions within the SMTC planning area.

**METHODOLOGY:**

A Bridge and Pavement Condition Management System (BPCMS) — a centralized database of all Federal-aid highways and bridges for cross jurisdictional comparisons — is beneficial to Metropolitan Planning Organizations (MPOs). The centralized database will also allow the SMTC and its member agencies to monitor progress toward long-range planning infrastructure goals. This database will be linked to the SMTC’s Geographic Information System (GIS).

**END PRODUCT:**

Annual working document for SMTC and member agencies of bridge and pavement conditions that includes: (1) comprehensive database of bridge and pavement conditions; (2) comparative database for individual road segments that shows condition by jurisdiction by year for all federal aid eligible roads; and (3) written summary that contains the liberal use of maps, charts, and tables to show the current bridge and pavement conditions.

Project Sponsor / Participating Agencies:	Funding Sources:		
<b>Sponsor:</b> SMTC  <b>Participating Agencies:</b> SMTC, City of Syracuse, NYSDOT, NYSTA, OCDOT, Other Agencies as Appropriate		<i>2008-2009</i>	<i>2009-2010</i>
	FHWA (PL)	\$ 10,000	\$ 10,000
	FTA (Sec. 5303)	\$ 0	\$ 0
	TOTAL	\$ 10,000	\$ 10,000
		\$ 20,000	



<b>PROJECT NO:</b>	<b>3E</b>
<b>PROJECT TITLE:</b>	<b>Clay/Cicero Rt. 31 Transportation Study</b>

**OBJECTIVE:**

To complete a transportation study for the Route 31 Corridor (and surrounding areas) in the Towns of Clay and Cicero that will examine the potential impact of transportation on the existing and future community, including land use decisions. The plan should be seamless with respect to town borders, and it should clearly state the preferred development goals and patterns.

**METHODOLOGY:**

The Clay/Cicero Route 31 Transportation Study is well underway. This study will be completed in the 2008-2009 program year. Over this program year the approved Scope of Work is expected to be completed including the following:

- Travel Demend Modeling;
- Study Advisory Committee and Public Meetings(s);
- Alternatives analysis;
- Final Recomendations; and
- The completion of a Draft Final Report.

**END PRODUCT:**

This project will result in various Technical Memorandums and a Final Report.

<b>Project Sponsor / Participating Agencies:</b>	<b>Funding Sources:</b>		
<b>Sponsor:</b> Towns of Cicero and Clay; SOCPA; and Onondaga County IDA;  <b>Participating Agencies:</b> Towns of Cicero and Clay, SMTC, SMTC Member Agencies, Other Agencies as Appropriate	FHWA (PL)	\$ 22,950	\$ 8,500
	FTA (Sec. 5303)	\$ 4,050	\$ 1,500
	TOTAL	\$ 27,000	\$ 10,000
		\$ 37,000	

<b>PROJECT NO:</b>	<b>3F</b>																			
<b>PROJECT TITLE:</b>	<b>Congestion Management Process (CMP)</b>																			
<b>OBJECTIVE:</b>																				
To address Congestion Management at the MPO consistent with Federal requirements.																				
<b>METHODOLOGY:</b>																				
<p>The Syracuse Metropolitan Transportation Council (SMTC) has developed a Congestion Management Process that is consistent with Federal requirements and State guidelines. In addition, it is consistent with the State's Congestion Management Process. Staff has worked with local highway officials to determine the appropriate level of effort desired for voluntary CMP implementation strategies/programs.</p> <p>The CMP is now being completed on a two-year cycle and in 'non-TIP' years so that the results of the CMP can be utilized in determining which potential TIP projects may help to alleviate congestion.</p> <p>The revised CMP process utilizes the SMTC's Travel Demand Modeling software to help identify areas of concern where further analysis will be undertaken consistent with the pre-existing processes.</p>																				
<b>END PRODUCT:</b>																				
A completed CMP during the two year 2008-2010 program cycle.																				
<b>Project Sponsor / Participating Agencies:</b>		<b>Funding Sources:</b>																		
<b>Sponsor:</b> SMTC  <b>Participating Agencies:</b> SMTC, City of Syracuse, NYSDOT, NYSTA, OCDOT, SOCPA, Other Agencies as Appropriate		<table border="1"> <thead> <tr> <th></th> <th><u>2008-2009</u></th> <th><u>2009-2010</u></th> </tr> </thead> <tbody> <tr> <td>FHWA (PL)</td> <td>\$ 18,000</td> <td>\$ 17,100</td> </tr> <tr> <td>FTA (Sec. 5303)</td> <td>\$ 0</td> <td>\$ 900</td> </tr> <tr> <td></td> <td></td> <td>\$</td> </tr> <tr> <td><b>TOTAL</b></td> <td><b>\$ 18,000</b></td> <td><b>\$ 18,000</b></td> </tr> <tr> <td></td> <td></td> <td><b>\$36,000</b></td> </tr> </tbody> </table>		<u>2008-2009</u>	<u>2009-2010</u>	FHWA (PL)	\$ 18,000	\$ 17,100	FTA (Sec. 5303)	\$ 0	\$ 900			\$	<b>TOTAL</b>	<b>\$ 18,000</b>	<b>\$ 18,000</b>			<b>\$36,000</b>
	<u>2008-2009</u>	<u>2009-2010</u>																		
FHWA (PL)	\$ 18,000	\$ 17,100																		
FTA (Sec. 5303)	\$ 0	\$ 900																		
		\$																		
<b>TOTAL</b>	<b>\$ 18,000</b>	<b>\$ 18,000</b>																		
		<b>\$36,000</b>																		

<b>PROJECT NO:</b>	<b>3G</b>
<b>PROJECT TITLE:</b>	<b>CSX Intermodal Transportation Study</b>

**OBJECTIVE:**

To complete a detailed land use and transportation plan that will provide for improved road service to the CSX intermodal facility and other commercial and industrial uses in the study area.

**METHODOLOGY:**

The CSX intermodal facility in the Town of DeWitt has been identified by local officials as a major resource in the community with the potential to help create a significant number of jobs through the State's inland port initiative. However, to capitalize upon this opportunity a more efficient transportation network must be developed to service this industrial / commercial area in the community. The purpose of this project is to develop a detailed engineering plan that will provide the basis for the necessary transportation improvements.

This will be a consultant-based study. The consultant will be responsible for preparing an analysis/preliminary engineering program that will examine potential alignments for better intermodal connectivity between the rail yard, local road system, and the interstate system. Elements of the study will include confirmation of the project, project information and data collection, alternative development profiles, a generic environmental impact statement, a preliminary design and engineering report, and community presentations.

This project is expected to be completed during the two year 2008 - 2010 cycle.

**END PRODUCT:**

An engineering report that will outline the basis for a program of capital improvements to improve transportation service to the overall project area.

<b>Project Sponsor / Participating Agencies:</b>	<b>Funding Sources:</b>		
<b>Sponsor:</b> CNYRPDB  <b>Participating Agencies:</b> SMTC, CSX, Town of DeWitt, SMTC Member Agencies, Other Agencies as Appropriate		<i>2008-2009</i>	<i>2009-2010</i>
	FHWA (PL)	\$ 90,000	\$ 25,500
	FTA (Sec. 5303)	\$ 10,000	\$ 4,500
	TOTAL	\$ 100,000	\$ 30,000
		\$ 130,000	

<b>PROJECT NO:</b>	<b>3H</b>																
<b>PROJECT TITLE:</b>	<b>University Hill Bike Network Project</b>																
<b>OBJECTIVE:</b>																	
To complete a recommendation of the University Hill Transportation Study relating to the creation of a bike network in the University Hill area.																	
<b>METHODOLOGY:</b>																	
The project will examine the Bike Network routes recommended in the University Hill Transportation Study and develop a proposed network to utilize existing urban roadways to provide a hybrid of bicycle lanes, shared roadways and traffic calming to create a grid of streets that encourage daily use of bicycles for urban transportation.																	
<b>END PRODUCT:</b>																	
A recommended network of streets and treatments for those streets that will allow the City of Syracuse to enhance the University Hill area in terms of bicycle access and utility.																	
<b>Project Sponsor / Participating Agencies:</b>		<b>Funding Sources:</b>															
<b>Sponsor:</b> City of Syracuse		<table border="1"> <thead> <tr> <th></th> <th><u>2008-2009</u></th> <th><u>2009-2010</u></th> </tr> </thead> <tbody> <tr> <td>FHWA (PL)</td> <td>\$ 35,000</td> <td>\$ 5,000</td> </tr> <tr> <td>FTA (Sec. 5303)</td> <td>\$ 0</td> <td>\$ 0</td> </tr> <tr> <td><b>TOTAL</b></td> <td><b>\$ 35,000</b></td> <td><b>\$ 5,000</b></td> </tr> <tr> <td></td> <td></td> <td><b>\$40,000</b></td> </tr> </tbody> </table>		<u>2008-2009</u>	<u>2009-2010</u>	FHWA (PL)	\$ 35,000	\$ 5,000	FTA (Sec. 5303)	\$ 0	\$ 0	<b>TOTAL</b>	<b>\$ 35,000</b>	<b>\$ 5,000</b>			<b>\$40,000</b>
	<u>2008-2009</u>	<u>2009-2010</u>															
FHWA (PL)	\$ 35,000	\$ 5,000															
FTA (Sec. 5303)	\$ 0	\$ 0															
<b>TOTAL</b>	<b>\$ 35,000</b>	<b>\$ 5,000</b>															
		<b>\$40,000</b>															
<b>Participating Agencies:</b> SMTC, MDA, City of Syracuse, other Agencies as appropriate																	

<b>PROJECT NO:</b>	<b>3I</b>
<b>PROJECT TITLE:</b>	<b>Downer Street Corridor Study</b>

**OBJECTIVE:**

To complete a transportation study for the Downer Street corridor in the Town of Van Buren and Village of Baldwinsville that will examine transportation and mobility conditions and issues. The study will also involve a land use analysis in terms of examining the transportation and land use connection in the study area, how these factors currently impact each other, and how to best plan for future interactions of the transportation and land use in the study area.

**METHODOLOGY:**

Due to a mix of increasingly intensive commercial and residential growth combined with commuter through traffic, the Downer Street Corridor (between NYS 690 and Canton Street in the Village of Baldwinsville) is perceived by the Town of Van Buren to be suffering from issues relating to access, the impacts of existing and expected development, mobility, safety, and other related concerns. To that end, a corridor study has been undertaken to examine the existing conditions, issues, and possible alternatives for improving the current situation along the corridor. The study will focus on the transportation and mobility needs of the corridor and surrounding area as well as examine the land use and transportation connections within the area.

This study begun in the 2007-2008 program year and is underway. It is expected to be completed in the 2008-2009 program year. This will be a consultant led study.

**END PRODUCT:**

This project will result in various Technical Memorandums and a Final Report.

<b>Project Sponsor / Participating Agencies:</b>	<b>Funding Sources:</b>	
<b>Sponsor:</b> Town of Van Buren  <b>Participating Agencies:</b> SMTC, Town of Van Buren, Village of Baldwinsville, SMTC Member Agencies, Other Agencies as Appropriate.		<u>2008-2009</u>
	FHWA (PL)	\$ 73,800
	FTA (Sec. 5303)	\$ 8,200
	TOTAL	\$82,000
		<u>2009-2010</u>
		\$ 8,000
		\$ 2,000
		\$10,000
	\$ 92,000	

<b>PROJECT NO:</b>	<b>3J</b>		
<b>PROJECT TITLE:</b>	<b>Emergency Travel Study</b>		
<b>OBJECTIVE:</b>			
<p>To develop an integrated emergency transportation and travel management plan to coordinate the responses of transportation departments, traffic management, transit providers, emergency communications, and public information in the event of natural or other community disasters for Onondaga County.</p>			
<b>METHODOLOGY:</b>			
<p>This multi-year task will entail the preparation and wide dissemination of information necessary for management of travel demand related communications during emergency events. This project will be a collaborative effort, not only by SMTC member agencies, but also including the NY State Emergency Management Office, as well as carefully targeted participation for those public, private and non-profit departments and agencies with responsibilities for traffic management and public health and safety during emergencies in Onondaga County.</p> <p>The work products will include GIS databases of the transportation system and transit resources and routes tailored to needs of first responders and emergency management and communications authorities, as well as plans and implementation strategies and necessary capital improvements.</p> <p>It is anticipated that an RFP will be issued and a consultant will be retained in the 2008-2009 year as well as project startup. The bulk of the project however is likely to be completed in subsequent years.</p>			
<b>END PRODUCT:</b>			
<p>Identification of travel resources and emergency travel routes in GIS format; procedures for management of the transportation system during response to countywide and local emergencies; plans to mitigate vulnerabilities in the transportation system; and implementation strategies.</p>			
<b>Project Sponsor / Participating Agencies:</b>		<b>Funding Sources:</b>	
<b>Sponsor:</b> Onondaga County		<u>2008-2009</u>	<u>2009-2010</u>
	FHWA (PL)	\$ 65,600	\$ 64,000
	FTA (Sec. 5303)	\$ 16,400	\$ 16,000
<b>Participating Agencies:</b> SMTC, SMTC Member Agencies, Other Agencies as appropriate	TOTAL	\$ 82,000	\$ 80,000
		\$ 162,000	

<b>UPWP TASK NO:</b>	<b>3K</b>
<b>TASK TITLE:</b>	<b>Environmental Justice</b>

**OBJECTIVE:**

To continue to study issues relevant to environmental justice in the SMTC area. This includes examining the relationship between various socio-economic and demographic data and the transportation systems and plans in the MPO area.

**METHODOLOGY:**

This is an annual activity to address environmental justice issues in the MPO area by examining the relationship between various socio-economic/demographic data and the transportation systems and plans.

In general, the following will be completed:

- Update target areas as necessary and as data allows;
- Utilize available data sets to refine where necessary the geographic areas where the noted socio-economic and demographic conditions exist in the MPO area;
- Continue to examine the existing transportation and transit system as it relates to the areas noted above;
- Continue to examine the location of future transportation projects via the LRTP and the TIP, and study the correlation of these future projects to the areas noted above;
- Utilize GIS and other automated tools, create maps, charts, and other relevant graphics to depict the existing and potential future conditions relevant to environmental justice; and
- Facilitate Study Advisory Committee meetings that will develop goals and objectives as well as future deliverables for this project.

The findings of this process should be taken into consideration for future transportation planning and capital projects in the MPO area.

**END PRODUCT:**

Continued effort in the Environmental Justice arena to further the MPO’s progress in meeting federal requirements.

<b>Project Sponsor / Participating Agencies:</b>	<b>Funding Sources:</b>		
<b>Sponsor:</b> SMTC  <b>Participating Agencies:</b> SMTC, CNYRPDB, CNYRTA, City of Syracuse, NYSDOT, OCDOT, and SOCPA		<i><u>2008-2009</u></i>	<i><u>2009-2010</u></i>
	FHWA (PL)	\$ 10,000	\$ 8,000
	FTA (Sec. 5303)	\$ 0	\$ 2,000
	<b>TOTAL</b>	<b>\$ 10,000</b>	<b>\$ 10,000</b>
		<b>\$ 20,000</b>	

<b>UPWP TASK NO:</b>	<b>3L</b>
<b>TASK TITLE:</b>	<b>I-81 Public Participation Project</b>

**OBJECTIVE:**

To facilitate a public participation effort in conjunction with NYSDOT’s I-81 Corridor Study.

**METHODOLOGY:**

This multi-year project is linked to the NYSDOT’s I-81 Corridor Study as well as the SMTC’s I-81 Travel Demand Modeling Project. The major components of the project are:

1. Outreach and education to inform the public about the corridor; its role, function, outlook, and general condition; and the existing conditions of adjacent areas impacted by it;
2. Education to inform the public about the various planning processes that currently surround the corridor;
3. A public involvement process to gather input on issues/concerns related to I-81 and its environs; and
4. A public involvement process to garner public opinion regarding the future alternatives for the roadway in this area.

The results of this project will be used as input for the SMTC’s technical work on the I-81 modeling effort (a related, but separate Scope of Work). These two products, along with substantial additional technical analysis done by the NYSDOT, will form the foundation for NYSDOT’s greater I-81 corridor study, which will make the final determination regarding the future of I-81. NYSDOT’s study is funded via FHWA State Planning and Research (SPR) funding and the SMTC (and its member agencies) will be key stakeholders of the NYSDOT effort. In addition, the final determination of the NYSDOT study will ultimately be manifested as a Transportation Improvement Program (TIP) project, which will require approval and concurrence by all SMTC member agencies.

**END PRODUCT:**

A documented public involvement process relating to the future of the I-81 Corridor in the MPO area and participation in the NYSDOT SPR funded I-81 corridor study.

<b>Project Sponsor / Participating Agencies:</b>	<b>Funding Sources:</b>	
<b>Sponsor:</b> NYSDOT  <b>Participating Agencies:</b> SMTC, CNYRPDB, CNYRTA, City of Syracuse, NYSDOT, OCDOT, SOCPA and others as appropriate.	<i>2008-2009</i>	<i>2009-2010</i>
	FHWA (PL)	\$ 142,500
	FTA (Sec. 5303)	\$ 7,500
	TOTAL	\$ 150,000
	\$ 300,000	



<b>PROJECT NO:</b>	<b>3M</b>																
<b>PROJECT TITLE:</b>	<b>I-81 Travel Demand Modeling Project</b>																
<b>OBJECTIVE:</b>																	
<p>To utilize the SMTC’s Travel Demand Model to evaluate the existing and future traffic conditions along I- 81 in the MPO area. This analysis will be performed for a variety of different potential alternatives and scenarios.</p>																	
<b>METHODOLOGY:</b>																	
<p>The SMTC will utilize its Travel Demand Model to evaluate different alternative planning scenarios for the I-81 Corridor in the MPO area with the goal being to demonstrate the traffic impacts/projections of those scenarios on both the state and local transportation systems. This study will be performed in such a way that preservation of the integrity of the transportation system is assured and sound mobility and reliability measures will be utilized.</p> <p>This project will be critically linked to the I-81 Public Participation Project and the NYSDOT I-81 Corridor Study.</p> <p>The major elements of this effort are to:</p> <ol style="list-style-type: none"> <li>1. Refine the SMTC’s travel demand model in order to improve its validity, and</li> <li>2. Use the travel demand model to evaluate various potential concepts for the I-81 corridor (and permutations of those concepts), based on: <ul style="list-style-type: none"> <li>- impacts to the transportation network of the greater metropolitan region and</li> <li>- impacts to regional interstate access and general mobility, with an emphasis on the movement of goods and people, and with a keen awareness of regional air quality implications.</li> </ul> </li> </ol> <p>The results of this project will be completed in conjunction with the SMTC’s I-81 Public Participation Project (a related but separate Scope of Work). The findings of the public participation effort will be used to assist in the development of alternatives to be tested in the model, and the results of the modeling effort will be reported to the public through the Public Participation Project. These two projects, along with additional technical analysis done by the NYSDOT, will form the foundation for NYSDOT’s greater I-81 corridor study, which will make the final determination regarding the future of I-81. The SMTC will be a key stakeholder in the NYSDOT study. In addition, the final determination of the NYSDOT study will ultimately be manifested as a Transportation Improvement Program (TIP) project, which will require approval by all SMTC member agencies.</p>																	
<b>END PRODUCT:</b>																	
<p>This project will result in a final report containing a detailed discussion and traffic analysis for the various studied alternatives.</p>																	
<b>Project Sponsor / Participating Agencies:</b>		<b>Funding Sources:</b>															
<p><b>Sponsor:</b> NYSDOT</p> <p><b>Participating Agencies:</b> SMTC, SMTC Member Agencies, Other Agencies as Appropriate</p>		<table border="1"> <thead> <tr> <th></th> <th><u>2008-2009</u></th> <th><u>2009-2010</u></th> </tr> </thead> <tbody> <tr> <td>FHWA (PL)</td> <td>\$ 104,500</td> <td>\$ 76,000</td> </tr> <tr> <td>FTA (Sec. 5303)</td> <td>\$ 5,500</td> <td>\$ 19,000</td> </tr> <tr> <td><b>TOTAL</b></td> <td><b>\$ 110,000</b></td> <td><b>\$ 95,000</b></td> </tr> <tr> <td></td> <td colspan="2" style="text-align: center;"><b>\$ 205,000</b></td> </tr> </tbody> </table>		<u>2008-2009</u>	<u>2009-2010</u>	FHWA (PL)	\$ 104,500	\$ 76,000	FTA (Sec. 5303)	\$ 5,500	\$ 19,000	<b>TOTAL</b>	<b>\$ 110,000</b>	<b>\$ 95,000</b>		<b>\$ 205,000</b>	
	<u>2008-2009</u>	<u>2009-2010</u>															
FHWA (PL)	\$ 104,500	\$ 76,000															
FTA (Sec. 5303)	\$ 5,500	\$ 19,000															
<b>TOTAL</b>	<b>\$ 110,000</b>	<b>\$ 95,000</b>															
	<b>\$ 205,000</b>																

<b>PROJECT NO:</b>	3N		
<b>PROJECT TITLE:</b>	MPO Regional Planning Initiatives		
<b>OBJECTIVE:</b>			
To allow the SMTC to be actively involved in the many important regional planning initiatives that either currently exist or may begin over the program year.			
<b>METHODOLOGY:</b>			
Numerous significant planning initiatives either currently exist or may come to fruition over the coming program year. This project is to allow for the SMTC to participate in these initiatives. Additionally, member agencies may request SMTC specific planning, analysis, or related activities in regards to these initiatives via this task. Examples of past work that fall under this category include the I-90 Corridor planning, Lakefront Planning, City of Syracuse Comprehensive Planning and other related activities.			
<b>END PRODUCT:</b>			
Active SMTC participation in important regional planning initiatives.			
<b>Project Sponsor / Participating Agencies:</b>		<b>Funding Sources:</b>	
<b>Sponsor:</b> SMTC/Various		<u>2008-2009</u>	<u>2009-2010</u>
	FHWA (PL)	\$ 18,000	\$ 16,000
<b>Participating Agencies:</b> SMTC, SMTC Member Agencies, Other Agencies as Appropriate	FTA (Sec. 5303)	\$ 2,000	\$ 4,000
	TOTAL	\$ 20,000	\$ 20,000
		\$ 40,000	

<b>PROJECT NO:</b>	<b>30</b>																
<b>PROJECT TITLE:</b>	<b>Long Range Transportation Plan</b>																
<b>OBJECTIVE:</b>																	
Begin efforts on the new 2011 Long Range Transportation Plan (LRTP).																	
<b>METHODOLOGY:</b>																	
<p>As required by law, each Metropolitan Planning Organization (MPO) must have a complete and up-to-date LRTP. Federal Regulations dictate that the Plan be updated a minimum of every four years. The SMTC's last complete LRTP was the <i>2020 Long Range Transportation Plan</i>, completed in 1995, with updates completed in 1998, 2001, 2004 and 2007.</p> <p>Efforts to develop the next update, which is due in 2011, will begin this program year.</p> <p>All tasks and activities conducted as part of this project will ensure that the principles and procedures of Environmental Justice and Title VI receive the appropriate attention. Future fiscal allocations will be required to allow for continuation and completion of a new LRTP.</p>																	
<b>END PRODUCT:</b>																	
Completion of the 2011 Long-Range Transportation Plan.																	
<b>Project Sponsor / Participating Agencies:</b>		<b>Funding Sources:</b>															
<b>Sponsor:</b> SMTC  <b>Participating Agencies:</b> SMTC, SMTC Member Agencies, Other Agencies as Appropriate		<table border="1"> <thead> <tr> <th></th> <th><u>2008-2009</u></th> <th><u>2009-2010</u></th> </tr> </thead> <tbody> <tr> <td>FHWA (PL)</td> <td>\$40,500</td> <td>\$40,000</td> </tr> <tr> <td>FTA (Sec. 5303)</td> <td>\$4,500</td> <td>\$10,000</td> </tr> <tr> <td>TOTAL</td> <td>\$45,000</td> <td>\$50,000</td> </tr> <tr> <td colspan="2"></td> <td>\$95,000</td> </tr> </tbody> </table>		<u>2008-2009</u>	<u>2009-2010</u>	FHWA (PL)	\$40,500	\$40,000	FTA (Sec. 5303)	\$4,500	\$10,000	TOTAL	\$45,000	\$50,000			\$95,000
			<u>2008-2009</u>	<u>2009-2010</u>													
		FHWA (PL)	\$40,500	\$40,000													
		FTA (Sec. 5303)	\$4,500	\$10,000													
TOTAL	\$45,000	\$50,000															
		\$95,000															

<b>PROJECT NO:</b>	<b>3P</b>		
<b>PROJECT TITLE:</b>	<b>Northern MPA Planning</b>		
<b>OBJECTIVE:</b>			
<p>To facilitate communication among and participate with MPO member agencies, various municipal representatives and other appropriate agencies regarding transportation planning efforts, needs and issues in the northern section of the SMTC metropolitan planning area.</p>			
<b>METHODOLOGY:</b>			
<p>This project began during the 2004-2005 program year and the SMTC will continue the efforts on this task through the 2008-2010 program, at a minimum. The project entails the SMTC continuing a working group committee that consists of interested stakeholders from the various municipalities in Northern Onondaga County and Southern Oswego County. This provides a forum for improved communications and coordination on transportation and land use planning. Currently, various municipalities are making good efforts at trying to address these quality of life type issues, however, it is being done individually without considering the regional implications. As the working group meets, data, knowledge and information relative to the transportation planning and land use activities, needs, and issues for the project area identified can be addressed. Proposed activities under this project include, but are not be limited to, the following: coordinating and hosting bi-monthly meetings; preparing mailings, minutes, etc. as necessary; providing research information as appropriate; and documenting the issues and concerns to this committee. The information gathered via this process will be critical to the Long Range Transportation Plan.</p>			
<b>END PRODUCT:</b>			
<p>Data, knowledge and information relative to the transportation planning and land use activities, needs, and issues for the project area. The information gathered via this process will be critical to the Long Range Transportation Plan.</p>			
<b>Project Sponsor / Participating Agencies:</b>		<b>Funding Sources:</b>	
<b>Sponsor:</b> SMTC	FHWA (PL)	<u>2008-2009</u> \$ 8,550	<u>2009-2010</u> \$ 6,750
	FTA (Sec. 5303)	\$ 450	\$ 2,250
<b>Participating Agencies:</b> SMTC, SMTC Member Agencies, Other Agencies as Appropriate	TOTAL	\$ 9,000	\$ 9,000
		\$ 18,000	

<b>PROJECT NO:</b>	<b>3Q</b>		
<b>PROJECT TITLE:</b>	<b>Operations and Integration</b>		
<b>OBJECTIVE:</b>			
Facilitate communication among and participate with MPO member agencies.			
<b>METHODOLOGY:</b>			
The task will allow for the SMTC to facilitate communication among the various SMTC member agencies relative to System Operations and Integration, including Intelligent Transportation Systems (ITS) issues and the completed ITS Strategic Plan for the Syracuse Metropolitan Area.			
<b>END PRODUCT:</b>			
Ongoing communications regarding Systems Operations, Integration and the Intelligent Transportation Systems Strategic Plan for the Syracuse Metropolitan Area.			
<b>Project Sponsor / Participating Agencies:</b>		<b>Funding Sources:</b>	
<b>Sponsor:</b> SMTC  <b>Participating Agencies:</b> SMTC, SMTC Member Agencies, Other Agencies as Appropriate		<u>2008-2009</u>	<u>2009-2010</u>
	FHWA (PL)	\$ 9,500	\$ 7,500
	FTA (Sec. 5303)	\$ 500	\$ 2,500
	TOTAL	\$ 10,000	\$ 10,000
		\$ 20,000	

<b>PROJECT NO:</b>	<b>3R</b>																
<b>PROJECT TITLE:</b>	<b>Rail, Truck and Transit Planning</b>																
<b>OBJECTIVE:</b>																	
<p>To include multi-modal transportation planning in the Metropolitan Planning Organization (MPO) process, in order to effectively address rail, truck and transit transportation issues, for moving both people and freight, as appropriate.</p>																	
<b>METHODOLOGY:</b>																	
<ul style="list-style-type: none"> <li>● Provide input and technical assistance from a multi-modal perspective to all SMTC transportation projects in order that rail, truck and transit travel are given appropriate consideration to any given SMTC project;</li> <li>● Conduct data collection, identify and assess existing conditions, develop and evaluate alternatives and/or prepare recommendations as required;</li> <li>● Identify issues of concern within the multi-modal arena for which a focused substantive transportation study may be appropriate; and</li> <li>● Provide staff support to multi-modal advisory committees and utilize, as appropriate, the committees as resources for providing input to specific multi-modal projects as well as multi-modal program development.</li> </ul> <hr/> <p>Additionally, over the coming year the SMTC will complete a Coordinated Public Transit-Human Services Plan. Under SAFETEA-LU, a Coordinated Public Transit-Human Services Plan for the region is required to continue eligibility for FTA funding streams. To that end, the SMTC will act as the lead agency in the coordination of this Plan. It is expected that this plan may be a multi-year effort and require input from a variety of government and community based organizations as well as require a significant Public Involvement Plan. Existing documents and plans will be examined for suitability to meet compliance and new efforts will only be undertaken where existing documents fail to meet required federal guidelines.</p>																	
<b>END PRODUCT:</b>																	
<p>Maintenance of a multi-modal component in all SMTC transportation projects, and miscellaneous technical reports and memoranda. Additionally, a Coordinated Public Transit-Human Services Planning effort that is expected to result in a new planning document.</p>																	
<b>Project Sponsor / Participating Agencies:</b>		<b>Funding Sources:</b>															
<p><b>Sponsor:</b> SMTC</p> <p><b>Participating Agencies:</b> SMTC, CNYRTA, SMTC Member Agencies, Other Agencies as Appropriate</p>		<table border="1"> <thead> <tr> <th></th> <th><i>2008-2009</i></th> <th><i>2009-2010</i></th> </tr> </thead> <tbody> <tr> <td>FHWA (PL)</td> <td>\$ 35,000</td> <td>\$ 25,000</td> </tr> <tr> <td>FTA (Sec. 5303)</td> <td>\$ 15,000</td> <td>\$ 25,000</td> </tr> <tr> <td>TOTAL</td> <td>\$ 50,000</td> <td>\$ 50,000</td> </tr> <tr> <td></td> <td colspan="2" style="text-align: center;">\$ 100,000</td> </tr> </tbody> </table>		<i>2008-2009</i>	<i>2009-2010</i>	FHWA (PL)	\$ 35,000	\$ 25,000	FTA (Sec. 5303)	\$ 15,000	\$ 25,000	TOTAL	\$ 50,000	\$ 50,000		\$ 100,000	
			<i>2008-2009</i>	<i>2009-2010</i>													
		FHWA (PL)	\$ 35,000	\$ 25,000													
		FTA (Sec. 5303)	\$ 15,000	\$ 25,000													
TOTAL	\$ 50,000	\$ 50,000															
	\$ 100,000																

<b>PROJECT NO:</b>	<b>3S</b>																
<b>PROJECT TITLE:</b>	<b>Traffic Safety</b>																
<b>OBJECTIVE:</b>																	
To participate in various Traffic Safety initiatives as appropriate.																	
<b>METHODOLOGY:</b>																	
<p>Integrating safety into the transportation planning process has recently been the focus of various Federal and State initiatives and is strongly encouraged within Metropolitan Planning Organizations.</p> <p>Staff has been actively involved for many years on the Onondaga County Traffic Safety Advisory Board and these efforts will be continued.</p> <p>In addition, this task includes the participation of staff on a NYSMPO Traffic Safety Working Group that is examining various traffic safety activities utilized throughout the state and their potential use within each MPO. Also, the Working Group will reach out to other state agencies such as the Department of Motor Vehicles and the Department of Transportation to better coordinate safety planning activities between MPOs and these agencies.</p>																	
<b>END PRODUCT:</b>																	
Continued participation on the Onondaga County Traffic Safety Advisory Board, and increase awareness regarding various Traffic Safety issues and further integration of traffic safety into the transportation planning process.																	
<b>Project Sponsor / Participating Agencies:</b>		<b>Funding Sources:</b>															
<b>Sponsor:</b> SMTC  <b>Participating Agencies:</b> SMTC, SMTC Member Agencies, Other Agencies as Appropriate		<table border="1"> <thead> <tr> <th></th> <th><i>2008-2009</i></th> <th><i>2009-2010</i></th> </tr> </thead> <tbody> <tr> <td>FHWA (PL)</td> <td>\$ 11,400</td> <td>\$ 10,200</td> </tr> <tr> <td>FTA (Sec. 5303)</td> <td>\$ 600</td> <td>\$ 1,800</td> </tr> <tr> <td><b>TOTAL</b></td> <td><b>\$ 12,000</b></td> <td><b>\$ 12,000</b></td> </tr> <tr> <td></td> <td colspan="2" style="text-align: center;"><b>\$ 24,000</b></td> </tr> </tbody> </table>		<i>2008-2009</i>	<i>2009-2010</i>	FHWA (PL)	\$ 11,400	\$ 10,200	FTA (Sec. 5303)	\$ 600	\$ 1,800	<b>TOTAL</b>	<b>\$ 12,000</b>	<b>\$ 12,000</b>		<b>\$ 24,000</b>	
	<i>2008-2009</i>	<i>2009-2010</i>															
FHWA (PL)	\$ 11,400	\$ 10,200															
FTA (Sec. 5303)	\$ 600	\$ 1,800															
<b>TOTAL</b>	<b>\$ 12,000</b>	<b>\$ 12,000</b>															
	<b>\$ 24,000</b>																

<b>PROJECT NO:</b>	<b>3T</b>		
<b>PROJECT TITLE:</b>	<b>Transportation/Land Use Educational Outreach</b>		
<b>OBJECTIVE:</b>			
To provide an educational outreach program intended to inform municipal officials and the general public on the relationship between transportation and land use in creating more livable communities.			
<b>METHODOLOGY:</b>			
In the previous year, an interactive CD was created for utilization by the local planning boards and related bodies. This CD is an educational tool that works to assist local planners on the importance of the transportation and land use connection. In the coming year, that initiative will be built upon and fostered. Outreach to local planning agencies will be undertaken via this item as well as improvements to the interactive CD if identified.			
<b>END PRODUCT:</b>			
Delivery of an on-going educational outreach program.			
<b>Project Sponsor / Participating Agencies:</b>		<b>Funding Sources:</b>	
<b>Sponsor:</b> SMTC  <b>Participating Agencies:</b> SMTC, Other Agencies as Appropriate		<u>2008-2009</u>	<u>2009-2010</u>
	FHWA (PL)	\$ 11,400	\$ 9,000
	FTA (Sec. 5303)	\$ 600	\$ 3,000
	TOTAL	\$ 12,000	\$ 12,000
		\$ 24,000	



<b>PROJECT NO:</b>	3U		
<b>PROJECT TITLE:</b>	Travel Demand Modeling		
<b>OBJECTIVE:</b>			
To improve and utilize the SMTC's Travel Demand Model in support of the planning needs of the SMTC and its member agencies.			
<b>METHODOLOGY:</b>			
This task involves the following key steps:			
1) Maintenance of the existing model. This requires utilization of additional data sets and possible consultant efforts to be sure that the agency's model will meet SMTC's needs;			
2) Continue training of existing staff on the best way(s) to utilize the model in support of the SMTC and its member agencies;			
3) Work with the Interagency Consulting Group to ensure that the model will be accepted for the SMTC's required air quality and conformity needs; and			
4) Utilization of the model in support of existing projects and member agency requests for scenario planning.			
<b>END PRODUCT:</b>			
A maintained Travel Demand Model that meets the needs of the SMTC as well as the member agencies. In addition the model must comply with federal and state requirements for air quality and conformity.			
<b>Project Sponsor / Participating Agencies:</b>		<b>Funding Sources:</b>	
<b>Sponsor:</b> SMTC	FHWA (PL)	<u>2008-2009</u> \$ 64,000	<u>2009-2010</u> \$ 44,000
	FTA (Sec. 5303)	\$ 16,000	\$ 11,000
<b>Participating Agencies:</b> SMTC, SMTC Member Agencies	TOTAL	\$ 80,000	\$ 55,000
			\$ 135,000

<b>PROJECT NO:</b>	<b>3V</b>																
<b>PROJECT TITLE:</b>	<b>University Hill Transportation Study Phase II: Feasibility Study for Park and Ride Initiative</b>																
<b>OBJECTIVE:</b>																	
To complete a feasibility study for a park and ride initiative in the University Hill area.																	
<b>METHODOLOGY:</b>																	
<p>The recently completed University Hill Transportation Study identified shared parking resources and improved transit as key items for continued growth in the University Hill area. This study's purpose is to look at a specific example of a shared parking facility with transit shuttle service to employment locations on the hill. The study will manifest itself as a feasibility study with the objective of stating if it is feasible and if so how to accomplish it cost effectively and in a timely manner.</p>																	
<b>END PRODUCT:</b>																	
A documented feasibility study of a shared parking facility with transit services on University Hill in building on the recommendations of the completed University Hill Study.																	
<b>Project Sponsor / Participating Agencies:</b>		<b>Funding Sources:</b>															
<b>Sponsor:</b> Metropolitan Development Association  <b>Participating Agencies:</b> SMTC, CNYRTA, SMTC Member Agencies, Other Agencies as Appropriate		<table border="1"> <thead> <tr> <th></th> <th><u>2008-2009</u></th> <th><u>2009-2010</u></th> </tr> </thead> <tbody> <tr> <td>FHWA (PL)</td> <td>\$ 33,500</td> <td>\$ 0</td> </tr> <tr> <td>FTA (Sec. 5303)</td> <td>\$ 33,500</td> <td>\$ 0</td> </tr> <tr> <td>TOTAL</td> <td>\$ 71,000</td> <td>\$ 0</td> </tr> <tr> <td></td> <td colspan="2" style="text-align: center;">\$ 71,000</td> </tr> </tbody> </table>		<u>2008-2009</u>	<u>2009-2010</u>	FHWA (PL)	\$ 33,500	\$ 0	FTA (Sec. 5303)	\$ 33,500	\$ 0	TOTAL	\$ 71,000	\$ 0		\$ 71,000	
			<u>2008-2009</u>	<u>2009-2010</u>													
		FHWA (PL)	\$ 33,500	\$ 0													
		FTA (Sec. 5303)	\$ 33,500	\$ 0													
TOTAL	\$ 71,000	\$ 0															
	\$ 71,000																

<b>PROJECT NO:</b>	<b>3W</b>
<b>PROJECT TITLE:</b>	<b>University Hill Transportation Study Phase II: Feasibility Study for Short Term Transportation Recommendations</b>

**OBJECTIVE:**

To complete a feasibility study for several short term transportation recommendations for the University Hill area as recommended in the University Hill Transportation Study.

**METHODOLOGY:**

As the project sponsor for the completed University Hill Transportation Study, the City of Syracuse has requested that the Syracuse Metropolitan Transportation Council (SMTC) further three of the recommendations simultaneously from this finalized transportation study. Specifically, the City of Syracuse is interested in completing a single detailed feasibility study for the following University Hill Transportation Study recommendations:

- Installation of modern roundabouts on Almond Street as a short-term measure to improve vehicular and pedestrian traffic pending resolution of the longer-term I-81 Corridor issue;
- Reconfiguration of one-way street segments to two-way street segments as detailed in the report; and
- Lane narrowing of Almond Street.

Although there are more significant long term recommendations noted within the recently completed University Hill Transportation Study, the City of Syracuse is looking to evaluate and implement these recommendations immediately should they be determined viable through this Phase II Feasibility Study. These actions are meant as an interim step as the longer term recommendations are discussed and analyzed in the coming years.

**END PRODUCT:**

A documented feasibility study building on the recommendations of the completed University Hill Study as it relates to short term transportation recommendations.

<b>Project Sponsor / Participating Agencies:</b>	<b>Funding Sources:</b>		
<b>Sponsor:</b> City of Syracuse  <b>Participating Agencies:</b> SMTC, SMTC Member Agencies, Other Agencies as Appropriate	FHWA (PL)	<u>2008-2009</u> \$66,000	<u>2009-2010</u> \$ 0
	FTA (Sec. 5303)	\$22,000	\$ 0
	TOTAL	\$88,000	\$0
		\$ 88,000	

<b>PROJECT NO:</b>	<b>3X</b>
<b>PROJECT TITLE:</b>	<b>Carrier Site Access Transportation Study</b>

**OBJECTIVE:**

To develop a plan that will allow for improved public road access to a 130 acre parcel of land located on the west side of Thompson Road and Carrier Circle in the Onondaga County Town of DeWitt in the interests of economic development.

**METHODOLOGY:**

The CNY RPDB completed in July 2007 a site reuse plan for the Carrier Corporation campus in the Town of DeWitt. As part of this planning process, approximately 80 acres of land owned by Carrier on the west side of Thompson Road has been identified as surplus property no longer needed by Carrier to support their business operations. This property adjoins three parcels of land to the north that total approximately 50 acres. Two of these parcels are currently being actively used for commercial retail activity. The third parcel, that borders Carrier Circle, is occupied by a vacant commercial hotel building. As currently configured, the Carrier West side Thompson Road property and the three adjoining properties do not have adequate access to an organized road network that will ensure the most productive and efficient use of this property from an economic development perspective.

To address this issue, a consultant led study will provide a detailed transportation plan for improved public road access to the entire 130 acre parcel of land along Thompson Road. This transportation plan will incorporate an interior road network that will provide for controlled access points to Thompson Road. Elements of the study will include confirmation of the project, information and data collection, preparation of alternative site development profiles, and community presentations. This project will be completed in the 2008-2009 program year.

**END PRODUCT:**

A completed transportation study that will provide the basis for local officials to help advance the economic development of this property in a planned manner.

<b>Project Sponsor / Participating Agencies:</b>	<b>Funding Sources:</b>		
<b>Sponsor:</b> CNYRPDB  <b>Participating Agencies:</b> SMTC, NYSDOT, SOCPA, Town of DeWitt, SMTC Member Agencies, Other Agencies as Appropriate.		<u>2008-2009</u>	<u>2009-2010</u>
	FHWA (PL)	\$75,000	\$ 0
	FTA (Sec. 5303)	\$ 0	\$ 0
	TOTAL	\$75,000	\$ 0
		\$75,000	

<b>PROJECT NO:</b>	<b>3Y</b>		
<b>PROJECT TITLE:</b>	<b>Unallocated Funds for 2009-2010 planning efforts to be allocated at annual update cycle</b>		
<b>OBJECTIVE:</b>			
To identify that there will be additional planning efforts that will be undertaken in the 2009-2010 program that have not been identified in this program.			
<b>METHODOLOGY:</b>			
A call letter will be issued in 2008 to solicit planning projects from member agencies. If any of those projects are selected to be completed they will be funded with the monies that are currently unallocated for the 2009-2010 cycle. Additionally, carryover monies may be leveraged if there are substantial planning efforts requested by member agencies beyond the anticipated allocation. This issues will be dealt with comprehensively as part of the 2009-2010 UPWP update cycle.			
<b>END PRODUCT:</b>			
Planning activities as part of the 2009-2010 UPWP update cycle.			
<b>Project Sponsor / Participating Agencies:</b>		<b>Funding Sources:</b>	
<b>Sponsor:</b> To Be Determined in 2009-2010 cycle  <b>Participating Agencies:</b> SMTC, SMTC Member Agencies, Other Agencies as Appropriate		<u>2008-2009</u>	<u>2009-2010</u>
	FHWA (PL)	\$ 0	\$ 70,400
	FTA (Sec. 5303)	\$ 0	\$ 17,600
	TOTAL	\$ 0	\$88,000
		\$88,000	

**UNIFIED PLANNING WORK PROGRAM**

**FY 2008-2010**

**4. TRANSPORTATION IMPROVEMENT PROGRAM (TIP)**

**4A TIP Development and Maintenance**

<b>PROJECT NO:</b>	4A																
<b>PROJECT TITLE:</b>	TIP Development and Maintenance																
<p><b>OBJECTIVE:</b></p> <p>Maintain and update the Transportation Improvement Program (TIP). Activities for this project will also ensure that the TIP is in compliance with all federal and state requirements.</p>																	
<p><b>METHODOLOGY:</b></p> <p>The current TIP will be maintained, amended, and updated as necessary, in cooperation with the New York State Department of Transportation (NYSDOT), units of local government, and the Central New York Regional Transportation Authority (CNYRTA). Projects added will be submitted to the New York State Environmental Science Bureau (NYSDOT ESB) and the Interagency Consulting Group (ICG) to ensure consensus on impacts with the Program's conformity status.</p> <p>In addition, the SMTC will begin the process of developing a new TIP in the coming 2008-2010 program cycle.</p>																	
<p><b>END PRODUCT:</b></p> <p>A Transportation Improvement Program that is maintained, kept up to date and in compliance with all Federal and State requirements.</p>																	
<b>Project Sponsor / Participating Agencies:</b>		<b>Funding Sources:</b>															
<p><b>Sponsor:</b> SMTC</p> <p><b>Participating Agencies:</b> SMTC, SMTC Member Agencies, Other Agencies as Appropriate</p>		<table border="1"> <tr> <td></td> <td style="text-align: center;"><u>2008-2009</u></td> <td style="text-align: center;"><u>2009-2010</u></td> </tr> <tr> <td>FHWA (PL)</td> <td style="text-align: right;">\$ 22,500</td> <td style="text-align: right;">\$ 23,400</td> </tr> <tr> <td>FTA (Sec. 5303)</td> <td style="text-align: right;">\$ 2,500</td> <td style="text-align: right;">\$ 6,600</td> </tr> <tr> <td>TOTAL</td> <td style="text-align: right;">\$ 25,000</td> <td style="text-align: right;">\$ 30,000</td> </tr> <tr> <td></td> <td colspan="2" style="text-align: center;">\$ 55,000</td> </tr> </table>		<u>2008-2009</u>	<u>2009-2010</u>	FHWA (PL)	\$ 22,500	\$ 23,400	FTA (Sec. 5303)	\$ 2,500	\$ 6,600	TOTAL	\$ 25,000	\$ 30,000		\$ 55,000	
			<u>2008-2009</u>	<u>2009-2010</u>													
		FHWA (PL)	\$ 22,500	\$ 23,400													
		FTA (Sec. 5303)	\$ 2,500	\$ 6,600													
TOTAL	\$ 25,000	\$ 30,000															
	\$ 55,000																

**UNIFIED PLANNING WORK PROGRAM**

**FY 2008-2010**

**5. OTHER ACTIVITIES**

**5A Miscellaneous Activities and Special Technical Assistance**



<b>PROJECT NO:</b>	<b>5A</b>		
<b>PROJECT TITLE:</b>	<b>Miscellaneous Activities and Special Technical Assistance</b>		
<b>OBJECTIVE:</b>			
<p>This task covers miscellaneous projects that are assigned from time to time, both short-term and infrequent long-term projects that do not warrant individual UPWP projects. Additionally, this task provides for special technical assistance to member agencies, local governments, and other agencies and/or organizations as appropriate.</p>			
<b>METHODOLOGY:</b>			
<p>From time-to-time, miscellaneous projects are assigned to staff. Many are one time studies or reports, while other tasks are more long-term in nature, and are infrequent enough or so limited in scope of MPO participation, and therefore do not warrant a separate UPWP project.</p> <p>Tasks may include such activities as participation in various New York State MPO statewide initiatives, and reviewing proposed Federal regulations.</p> <p>This task also allows the SMTC to provide technical assistance to member agencies, local governments, and other agencies/organizations which were not foreseen or known during the preparation of the annual UPWP.</p>			
<b>END PRODUCT:</b>			
<p>Various activities, technical assistance, research, analysis, published documents, memoranda, brief reports, etc., as appropriate.</p>			
<b>Project Sponsor / Participating Agencies:</b>		<b>Funding Sources:</b>	
<p><b>Sponsor:</b> SMTC</p> <p><b>Participating Agencies:</b> SMTC, SMTC Member Agencies, Other Agencies as Appropriate</p>	FHWA (PL)	<u>2008-2009</u> \$ 18,979	<u>2009-2010</u> \$ 16,054
	FTA (Sec. 5303)	\$ 1,441	\$ 3,909
	TOTAL	\$ 20,420	\$ 19,962
			\$ 40,382

## **UNIFIED PLANNING WORK PROGRAM**

**FY 2008-2010**

### **6. BUDGET TABLES**

#### **2008-2009**

**TABLE 1 - SUMMARY BUDGET**

**TABLE 2 - SUMMARY BUDGET - FEDERAL PROGRAMS ONLY**

**TABLE 3 - FHWA BUDGETS**

**TABLE 4 - FTA BUDGETS**

**TABLE 5 - TOTAL FEDERAL BUDGETS**

**TABLE 6 - TOTAL AUDITABLE BUDGET**

#### **2009-2010**

**TABLE 1 - SUMMARY BUDGET**

**TABLE 2 - SUMMARY BUDGET - FEDERAL PROGRAMS ONLY**

**TABLE 3 - FHWA BUDGETS**

**TABLE 4 - FTA BUDGETS**

**TABLE 5 - TOTAL FEDERAL BUDGETS**

**TABLE 6 - TOTAL AUDITABLE BUDGET**

**TABLE 1**  
**2008 - 2009 SUMMARY BUDGET**

TASK BUDGET									
TASK		FUNDING SOURCE							
ID	Category	FHWA	FTA	FTA %	Total Federal	Total Non-Federal	State	County	Total
<b>1.</b>	<b>Program Administration and Support (44.21.00)</b>								
A.	General Administration	\$191,250	\$33,750	15%	\$225,000	\$56,250	\$42,188	\$14,063	\$281,250
B.	Professional Services - Miscellaneous	\$4,750	\$250	5%	\$5,000	\$1,250	\$938	\$313	\$6,250
C.	Public Participation	\$15,000	\$5,000	25%	\$20,000	\$5,000	\$3,750	\$1,250	\$25,000
D.	SAFETEA-LU - Miscellaneous	\$2,500	\$2,500	50%	\$5,000	\$1,250	\$938	\$313	\$6,250
E.	UPWP Previous Year Closeouts	\$9,000	\$0	0%	\$9,000	\$2,250	\$1,688	\$563	\$11,250
F.	UPWP Maintenance and Development	\$9,500	\$500	5%	\$10,000	\$2,500	\$1,875	\$625	\$12,500
	<b>Total Program Administration and Support</b>	<b>\$232,000</b>	<b>\$42,000</b>	<b>15%</b>	<b>\$274,000</b>	<b>\$68,500</b>	<b>\$51,375</b>	<b>\$17,125</b>	<b>\$342,500</b>
<b>2.</b>	<b>Short-Range Transportation Planning (44.24.00)</b>								
A.	Census Data Compilation and/or Analysis	\$6,375	\$1,125	15%	\$7,500	\$1,875	\$1,406	\$469	\$9,375
B.	Data Collection, Compilation and/or Analysis	\$35,150	\$1,850	5%	\$37,000	\$9,250	\$6,938	\$2,313	\$46,250
C.	Functional Classification System Review	\$4,000	\$0	0%	\$4,000	\$1,000	\$750	\$250	\$5,000
D.	Geographic Information Systems	\$46,750	\$8,250	15%	\$55,000	\$13,750	\$10,313	\$3,438	\$68,750
	<b>Total Short-Range Transportation Planning</b>	<b>\$92,275</b>	<b>\$11,225</b>	<b>11%</b>	<b>\$103,500</b>	<b>\$25,875</b>	<b>\$19,406</b>	<b>\$6,469</b>	<b>\$129,375</b>
<b>3.</b>	<b>Long Range Transportation Planning (44.23.02)</b>								
A.	Air Quality, Conformity and Energy	\$16,500	\$5,500	25%	\$22,000	\$5,500	\$4,125	\$1,375	\$27,500
B.	Air/Water Planning	\$5,000	\$0	0%	\$5,000	\$1,250	\$938	\$313	\$6,250
C.	Bicycle/Pedestrian Planning	\$28,800	\$3,200	10%	\$32,000	\$8,000	\$6,000	\$2,000	\$40,000
D.	Bridge & Pavement Condition Management System (BPCMS)	\$10,000	\$0	0%	\$10,000	\$2,500	\$1,875	\$625	\$12,500
E.	Clay/Cicero Rt. 31 Transportation Study	\$22,950	\$4,050	15%	\$27,000	\$6,750	\$5,063	\$1,688	\$33,750
F.	Congestion Management Process	\$18,000	\$0	0%	\$18,000	\$4,500	\$3,375	\$1,125	\$22,500
G.	CSX Intermodal Transportation Study	\$90,000	\$10,000	10%	\$100,000	\$25,000	\$18,750	\$6,250	\$125,000
H.	University Hill Bike Network Project	\$35,000	\$0	0%	\$35,000	\$8,750	\$6,563	\$2,188	\$43,750
I.	Downer Street Corridor Study	\$73,800	\$8,200	10%	\$82,000	\$20,500	\$15,375	\$5,125	\$102,500
J.	Emergency Travel Study	\$65,600	\$16,400	20%	\$82,000	\$20,500	\$15,375	\$5,125	\$102,500
K.	Environmental Justice	\$10,000	\$0	0%	\$10,000	\$2,500	\$1,875	\$625	\$12,500
L.	I-81 Public Participation Project	\$142,500	\$7,500	5%	\$150,000	\$37,500	\$28,125	\$9,375	\$187,500
M.	I-81 Travel Demand Modeling Project	\$104,500	\$5,500	5%	\$110,000	\$27,500	\$20,625	\$6,875	\$137,500
N.	MPO Area Regional Planning Initiatives	\$18,000	\$2,000	10%	\$20,000	\$5,000	\$3,750	\$1,250	\$25,000
O.	Long Range Transportation Plan	\$40,500	\$4,500	10%	\$45,000	\$11,250	\$8,438	\$2,813	\$56,250
P.	Northern MPA Planning	\$8,550	\$450	5%	\$9,000	\$2,250	\$1,688	\$563	\$11,250
Q.	Operations & Integration	\$9,500	\$500	5%	\$10,000	\$2,500	\$1,875	\$625	\$12,500
R.	Rail Truck and Transit Planning	\$35,000	\$15,000	30%	\$50,000	\$12,500	\$9,375	\$3,125	\$62,500
S.	Traffic Safety	\$11,400	\$600	5%	\$12,000	\$3,000	\$2,250	\$750	\$15,000
T.	Transportation/Land Use Educational Outreach	\$11,400	\$600	5%	\$12,000	\$3,000	\$2,250	\$750	\$15,000
U.	Travel Demand Modeling	\$64,000	\$16,000	20%	\$80,000	\$20,000	\$15,000	\$5,000	\$100,000
V.	University Hill Transportation Study Phase II: Feasibility Study for Park and Ride Initiative	\$35,500	\$35,500	50%	\$71,000	\$17,750	\$13,313	\$4,438	\$88,750
W.	University Hill Transportation Study Phase II: Feasibility Study for Short Term Transportation Recommendations	\$66,000	\$22,000	25%	\$88,000	\$22,000	\$16,500	\$5,500	\$110,000
X.	Carrier Site Access Transportation Study	\$75,000	\$0	0%	\$75,000	\$18,750	\$14,063	\$4,688	\$93,750
Y.	Unallocated funds for 2009-2010 to be allocated at annual update cycle	\$0	\$0	0%	\$0	\$0	\$0	\$0	\$0
	<b>Total Long-Range Transportation Planning</b>	<b>\$997,500</b>	<b>\$157,500</b>	<b>14%</b>	<b>\$1,155,000</b>	<b>\$288,750</b>	<b>\$216,563</b>	<b>\$72,188</b>	<b>\$1,443,750</b>
<b>4.</b>	<b>Transportation Improvement Program (TIP) (44.25.00)</b>								
A.	TIP Development & Maintenance	\$22,500	\$2,500	10%	\$25,000	\$6,250	\$4,688	\$1,563	\$31,250
	<b>Total Transportation Improvement Program</b>	<b>\$22,500</b>	<b>\$2,500</b>	<b>10%</b>	<b>\$25,000</b>	<b>\$6,250</b>	<b>\$4,688</b>	<b>\$1,563</b>	<b>\$31,250</b>
<b>5.</b>	<b>Other Activities (44.27.00)</b>								
A.	Miscellaneous Activities and Special Technical Assistance	\$18,979	\$1,441	7%	\$20,420	\$5,105	\$3,829	\$1,276	\$25,525
	<b>Total Other Activities</b>	<b>\$18,979</b>	<b>\$1,441</b>	<b>7%</b>	<b>\$20,420</b>	<b>\$5,105</b>	<b>\$3,829</b>	<b>\$1,276</b>	<b>\$25,525</b>
	<b>Grand Total FHWA PL &amp; FTA MPP Funds</b>	<b>\$1,363,255</b>	<b>\$214,665</b>	<b>14%</b>	<b>\$1,577,920</b>	<b>\$394,480</b>	<b>\$295,860</b>	<b>\$98,620</b>	<b>\$1,972,400</b>
	<b>Grand Total - All Fund Sources</b>				<b>\$1,577,920</b>				<b>\$1,972,400</b>

**TABLE 2**  
**2008 - 2009 SUMMARY BUDGET**  
**FEDERAL PROGRAM ONLY**

TASK BUDGET											
TASK		FUNDING SOURCE					RESPONSIBILITY				
ID	Task	FHWA	FTA	State	County	Total	Staff	CNY RPDB	State	County	Total
44.21.00	Program Administration and Support	\$232,000	\$42,000	\$51,375	\$17,125	\$342,500	\$209,000	\$65,000	\$51,375	\$17,125	\$342,500
44.24.00	Short-Range Transportation Planning	\$92,275	\$11,225	\$19,406	\$6,469	\$129,375	\$103,500	\$0	\$19,406	\$6,469	\$129,375
44.23.02	Long-Range Transportation Planning	\$997,500	\$157,500	\$216,563	\$72,188	\$1,443,750	\$1,155,000	\$0	\$216,563	\$72,188	\$1,443,750
44.25.00	Transportation Improvement Program	\$22,500	\$2,500	\$4,688	\$1,563	\$31,250	\$25,000	\$0	\$4,688	\$1,563	\$31,250
44.27.00	Other Activities	\$18,979	\$1,441	\$3,829	\$1,276	\$25,525	\$20,420	\$0	\$3,829	\$1,276	\$25,525
	<b>Total</b>	<b>\$1,363,255</b>	<b>\$214,665</b>	<b>\$295,860</b>	<b>\$98,620</b>	<b>\$1,972,400</b>	<b>\$1,512,920</b>	<b>\$65,000</b>	<b>\$295,860</b>	<b>\$98,620</b>	<b>\$1,972,400</b>
		<b>\$1,577,920</b>		<b>\$394,480</b>		<b>\$1,972,400</b>	<b>\$1,577,920</b>		<b>\$394,479</b>		<b>\$1,972,400</b>

AUDIT BUDGET						
ID	Category	Staff	CNY RPDB	State	County	Total
44.20.01	Salaries	\$481,721		\$135,800		\$617,521
44.20.02	Fringe	\$147,799		\$41,716		\$189,516
44.20.03	Travel	\$8,000				\$8,000
44.20.04	Equipment	\$23,500				\$23,500
44.20.05	Supplies	\$6,000				\$6,000
44.20.06	Contractual	\$767,600	\$65,000		\$98,620	\$931,220
44.20.07	Other	\$6,900				\$6,900
44.20.08	Indirect	\$71,400		\$118,344		\$189,744
	<b>Total</b>	<b>\$1,512,920</b>	<b>\$65,000</b>	<b>\$295,860</b>	<b>\$98,620</b>	<b>\$1,972,400</b>
		<b>\$1,577,920</b>		<b>\$394,480</b>		<b>\$1,972,400</b>
		<b>\$1,577,920</b>				<b>\$1,972,400</b>

**TABLE 3  
2008 - 2009 SUMMARY BUDGET  
FHWA BUDGET**

<b>TASK BUDGET</b>							
<b>ID</b>	<b>Task</b>	<b>Total</b>	<b>FHWA</b>	<b>Staff</b>	<b>CNY RPDB</b>	<b>State</b>	<b>County</b>
44.21.00	Program Administration and Support	\$290,000	\$232,000	\$176,964	\$55,036	\$43,500	\$14,500
44.24.00	Short-Range Transportation Planning	\$115,344	\$92,275	\$92,275		\$17,302	\$5,767
44.23.02	Long-Range Transportation Planning	\$1,246,875	\$997,500	\$997,500		\$187,031	\$62,344
44.25.00	Transportation Improvement Program	\$28,125	\$22,500	\$22,500		\$4,219	\$1,406
44.27.00	Other Activities	\$23,724	\$18,979	\$18,979		\$3,559	\$1,186
	<b>Total</b>	<b>\$1,704,068</b>	<b>\$1,363,255</b>	<b>\$1,308,218</b>	<b>\$55,036</b>	<b>\$255,610</b>	<b>\$85,203</b>

<b>\$1,704,068</b>	<b>\$1,308,218</b>	<b>\$55,036</b>	<b>\$255,610</b>	<b>\$85,203</b>
<b>\$1,704,068</b>				

<b>AUDIT BUDGET</b>						
<b>ID</b>	<b>Category</b>	<b>Total</b>	<b>Staff</b>	<b>CNY RPDB</b>	<b>State</b>	<b>County</b>
44.20.01	Salaries	\$533,869	\$416,543		\$117,325	
44.20.02	Fringe	\$163,843	\$127,802		\$36,041	
44.20.03	Travel	\$6,918	\$6,918			
44.20.04	Equipment	\$20,320	\$20,320			
44.20.05	Supplies	\$5,188	\$5,188			
44.20.06	Contractual	\$803,981	\$663,742	\$55,036		\$85,203
44.20.07	Other	\$5,966	\$5,966			
44.20.08	Indirect	\$163,983	\$61,739		\$102,244	
	<b>Total</b>	<b>\$1,704,069</b>	<b>\$1,308,218</b>	<b>\$55,036</b>	<b>\$255,610</b>	<b>\$85,203</b>

<b>\$1,704,068</b>	<b>\$1,308,218</b>	<b>\$55,036</b>	<b>\$255,610</b>	<b>\$85,203</b>
<b>\$1,704,068</b>				

**TABLE 4**  
**2008 - 2009 SUMMARY BUDGET**  
**FTA BUDGET**

<b>TASK BUDGET</b>							
<b>ID</b>	<b>Task</b>	<b>Total</b>	<b>FTA</b>	<b>Staff</b>	<b>CNY RPDB</b>	<b>State</b>	<b>County</b>
44.21.00	Program Administration and Support	\$52,500	\$42,000	\$32,036	\$9,964	\$7,875	\$2,625
44.24.00	Short-Range Transportation Planning	\$14,031	\$11,225	\$11,225		\$2,105	\$702
44.23.02	Long-Range Transportation Planning	\$196,875	\$157,500	\$157,500		\$29,531	\$9,844
44.25.00	Transportation Improvement Program	\$3,125	\$2,500	\$2,500		\$469	\$156
44.27.00	Other Activities	\$1,801	\$1,441	\$1,441		\$270	\$90
	<b>Total</b>	<b>\$268,333</b>	<b>\$214,665</b>	<b>\$204,702</b>	<b>\$9,964</b>	<b>\$40,250</b>	<b>\$13,417</b>

<b>\$268,333</b>	<b>\$214,665</b>	<b>\$204,702</b>	<b>\$9,964</b>	<b>\$40,250</b>	<b>\$13,417</b>
<b>\$268,333</b>					

<b>AUDIT BUDGET</b>						
<b>ID</b>	<b>Category</b>	<b>Total</b>	<b>Staff</b>	<b>CNY RPDB</b>	<b>State</b>	<b>County</b>
44.20.01	Salaries	\$83,653	\$65,178		\$18,475	
44.20.02	Fringe	\$25,673	\$19,998		\$5,675	
44.20.03	Travel	\$1,082	\$1,082			
44.20.04	Equipment	\$3,180	\$3,180			
44.20.05	Supplies	\$812	\$812			
44.20.06	Contractual	\$127,239	\$103,858	\$9,964		\$13,417
44.20.07	Other	\$934	\$934			
44.20.08	Indirect	\$25,761	\$9,661		\$16,100	
	<b>Total</b>	<b>\$268,333</b>	<b>\$204,702</b>	<b>\$9,964</b>	<b>\$40,250</b>	<b>\$13,417</b>

<b>\$268,333</b>	<b>\$204,702</b>	<b>\$9,964</b>	<b>\$40,250</b>	<b>\$13,417</b>
<b>\$268,333</b>				

**TABLE 5**  
**2008 - 2009 SUMMARY BUDGET**  
**TOTAL FEDERAL BUDGETS**

<b>TASK BUDGET</b>			
<b>ID</b>	<b>Task</b>	<b>Total Federal</b>	<b>Total</b>
44.21.00	Program Administration and Support	\$274,000	\$342,500
44.24.00	Short-Range Transportation Planning	\$103,500	\$129,375
44.23.02	Long-Range Transportation Planning	\$1,155,000	\$1,443,750
44.25.00	Transportation Improvement Program	\$25,000	\$31,250
44.27.00	Other Activities	\$20,420	\$25,525
	<b>Total</b>	<b>\$1,577,920</b>	<b>\$1,972,400</b>

<b>AUDIT BUDGET</b>			
<b>ID</b>	<b>Category</b>	<b>Total Federal</b>	<b>Total</b>
44.20.01	Salaries	\$481,721	\$617,522
44.20.02	Fringe	\$147,799	\$189,516
44.20.03	Travel	\$8,000	\$8,000
44.20.04	Equipment	\$23,500	\$23,500
44.20.05	Supplies	\$6,000	\$6,000
44.20.06	Contractual	\$832,600	\$931,220
44.20.07	Other	\$6,900	\$6,900
44.20.08	Indirect	\$71,400	\$189,744
	<b>Total</b>	<b>\$1,577,920</b>	<b>\$1,972,400</b>

<b>\$1,577,920</b>	<b>\$1,972,400</b>
--------------------	--------------------

**TABLE 6**  
**2008 - 2009 SUMMARY BUDGET**  
**TOTAL AUDITABLE BUDGET**

<b>AUDIT BUDGET</b>						
<b>ID</b>	<b>Category</b>	<b>Total</b>	<b>Staff</b>	<b>CNY RPDB</b>	<b>State</b>	<b>County</b>
44.20.01	Salaries	\$617,521	\$481,721		\$135,800	
44.20.02	Fringe	\$189,516	\$147,799		\$41,716	
44.20.03	Travel	\$8,000	\$8,000			
44.20.04	Equipment	\$23,500	\$23,500			
44.20.05	Supplies	\$6,000	\$6,000			
44.20.06	Contractual	\$931,220	\$767,600	\$65,000		\$98,620
44.20.07	Other	\$6,900	\$6,900			
44.20.08	Indirect	\$189,744	\$71,400		\$118,344	
	<b>Total</b>	<b>\$1,972,400</b>	<b>\$1,512,920</b>	<b>\$65,000</b>	<b>\$295,860</b>	<b>\$98,620</b>

<b>\$1,972,400</b>	<b>\$1,512,920</b>	<b>\$65,000</b>	<b>\$295,860</b>	<b>\$98,620</b>
<b>\$1,972,400</b>				



**TABLE 1**  
**2009 - 2010 SUMMARY BUDGET**

TASK BUDGET									
TASK		FUNDING SOURCE							
ID	Category	FHWA	FTA	FTA %	Total Federal	Total Non-Federal	State	County	Total
<b>1. Program Administration and Support (44.21.00)</b>									
A.	General Administration	\$195,500	\$34,500	15%	\$230,000	\$57,500	\$43,125	\$14,375	\$287,500
B.	Professional Services - Miscellaneous	\$4,106	\$1,677	29%	\$5,783	\$1,446	\$1,084	\$361	\$7,229
C.	Public Participation	\$18,750	\$6,250	25%	\$25,000	\$6,250	\$4,688	\$1,563	\$31,250
D.	SAFETEA-LU - Miscellaneous	\$3,750	\$1,250	25%	\$5,000	\$1,250	\$938	\$313	\$6,250
E.	UPWP Previous Year Closeouts	\$9,000	\$0	0%	\$9,000	\$2,250	\$1,688	\$563	\$11,250
F.	UPWP Maintenance and Development	\$8,500	\$1,500	15%	\$10,000	\$2,500	\$1,875	\$625	\$12,500
	<b>Total Program Administration and Support</b>	<b>\$239,606</b>	<b>\$45,177</b>	<b>16%</b>	<b>\$284,783</b>	<b>\$71,196</b>	<b>\$53,397</b>	<b>\$17,799</b>	<b>\$355,979</b>
<b>2. Short-Range Transportation Planning (44.24.00)</b>									
A.	Census Data Compilation and/or Analysis	\$7,125	\$375	5%	\$7,500	\$1,875	\$1,406	\$469	\$9,375
B.	Data Collection, Compilation and/or Analysis	\$18,000	\$2,000	10%	\$20,000	\$5,000	\$3,750	\$1,250	\$25,000
C.	Functional Classification System Review	\$4,000	\$0	0%	\$4,000	\$1,000	\$750	\$250	\$5,000
D.	Geographic Information Systems	\$46,750	\$8,250	15%	\$55,000	\$13,750	\$10,313	\$3,438	\$68,750
	<b>Total Short-Range Transportation Planning</b>	<b>\$75,875</b>	<b>\$10,625</b>	<b>12%</b>	<b>\$86,500</b>	<b>\$21,625</b>	<b>\$16,219</b>	<b>\$5,406</b>	<b>\$108,125</b>
<b>3. Long-Range Transportation Planning (44.23.02)</b>									
A.	Air Quality, Conformity and Energy	\$16,500	\$5,500	25%	\$22,000	\$5,500	\$4,125	\$1,375	\$27,500
B.	Air/Water Planning	\$5,000	\$0	0%	\$5,000	\$1,250	\$938	\$313	\$6,250
C.	Bicycle/Pedestrian Planning	\$19,800	\$2,200	10%	\$22,000	\$5,500	\$4,125	\$1,375	\$27,500
D.	Bridge & Pavement Condition Management System (BPCMS)	\$10,000	\$0	0%	\$10,000	\$2,500	\$1,875	\$625	\$12,500
E.	Clay/Cicero Rt. 31 Transportation Study	\$8,500	\$1,500	15%	\$10,000	\$2,500	\$1,875	\$625	\$12,500
F.	Congestion Management Process	\$17,100	\$900	5%	\$18,000	\$4,500	\$3,375	\$1,125	\$22,500
G.	CSX Intermodal Transportation Study	\$25,500	\$4,500	15%	\$30,000	\$7,500	\$5,625	\$1,875	\$37,500
H.	University Hill Bike Network Project	\$5,000	\$0	0%	\$5,000	\$1,250	\$938	\$313	\$6,250
I.	Downer Street Corridor Study	\$8,000	\$2,000	20%	\$10,000	\$2,500	\$1,875	\$625	\$12,500
J.	Emergency Travel Study	\$64,000	\$16,000	20%	\$80,000	\$20,000	\$15,000	\$5,000	\$100,000
K.	Environmental Justice	\$8,000	\$2,000	20%	\$10,000	\$2,500	\$1,875	\$625	\$12,500
L.	I-81 Public Participation Project	\$120,000	\$30,000	20%	\$150,000	\$37,500	\$28,125	\$9,375	\$187,500
M.	I-81 Travel Demand Modeling Project	\$76,000	\$19,000	20%	\$95,000	\$23,750	\$17,813	\$5,938	\$118,750
N.	MPO Area Regional Planning Initiatives	\$16,000	\$4,000	20%	\$20,000	\$5,000	\$3,750	\$1,250	\$25,000
O.	Long Range Transportation Plan	\$40,000	\$10,000	20%	\$50,000	\$12,500	\$9,375	\$3,125	\$62,500
P.	Northern MPA Planning	\$6,750	\$2,250	25%	\$9,000	\$2,250	\$1,688	\$563	\$11,250
Q.	Operations & Integration	\$7,500	\$2,500	25%	\$10,000	\$2,500	\$1,875	\$625	\$12,500
R.	Rail Truck and Transit Planning	\$25,000	\$25,000	50%	\$50,000	\$12,500	\$9,375	\$3,125	\$62,500
S.	Traffic Safety	\$10,200	\$1,800	15%	\$12,000	\$3,000	\$2,250	\$750	\$15,000
T.	Transportation/Land Use Educational Outreach	\$9,000	\$3,000	25%	\$12,000	\$3,000	\$2,250	\$750	\$15,000
U.	Travel Demand Modeling	\$44,000	\$11,000	20%	\$55,000	\$13,750	\$10,313	\$3,438	\$68,750
V.	University Hill Transportation Study Phase II: Feasibility Study for Park and Ride Initiative	\$0	\$0	25%	\$0	\$0	\$0	\$0	\$0
W.	University Hill Transportation Study Phase II: Feasibility Study for Short Term Transportation Recommendations	\$0	\$0	25%	\$0	\$0	\$0	\$0	\$0
X.	Carrier Site Access Transportation Study	\$0	\$0	20%	\$0	\$0	\$0	\$0	\$0
Y.	Unallocated funds for 2009-2010 to be allocated at annual update cycle	\$70,400	\$17,600	20%	\$88,000	\$22,000	\$16,500	\$5,500	\$110,000
	<b>Total Long-Range Transportation Planning</b>	<b>\$612,250</b>	<b>\$160,750</b>	<b>21%</b>	<b>\$773,000</b>	<b>\$193,250</b>	<b>\$144,938</b>	<b>\$48,313</b>	<b>\$966,250</b>
<b>4. Transportation Improvement Program (TIP) (44.25.00)</b>									
A.	TIP Development & Maintenance	\$23,400	\$6,600	22%	\$30,000	\$7,500	\$5,625	\$1,875	\$37,500
	<b>Total Transportation Improvement Program</b>	<b>\$23,400</b>	<b>\$6,600</b>	<b>22%</b>	<b>\$30,000</b>	<b>\$7,500</b>	<b>\$5,625</b>	<b>\$1,875</b>	<b>\$37,500</b>
<b>5. Other Activities (44.27.00)</b>									
A.	Miscellaneous Activities & Special Technical Assistance	\$16,054	\$3,909	20%	\$19,962	\$4,991	\$3,743	\$1,248	\$24,952
	<b>Total Other Activities</b>	<b>\$16,054</b>	<b>\$3,909</b>	<b>20%</b>	<b>\$19,962</b>	<b>\$4,991</b>	<b>\$3,743</b>	<b>\$1,248</b>	<b>\$24,952</b>
	<b>Grand Total FHWA PL &amp; FTA MPP Funds</b>	<b>\$967,184</b>	<b>\$227,061</b>	<b>20%</b>	<b>\$1,194,245</b>	<b>\$298,562</b>	<b>\$223,921</b>	<b>\$74,640</b>	<b>\$1,492,806</b>
	<b>Grand Total - All Fund Sources</b>				<b>\$1,194,245</b>				<b>\$1,492,806</b>

**TABLE 2**  
**2009 - 2010 SUMMARY BUDGET**  
**FEDERAL PROGRAM ONLY**

TASK BUDGET											
TASK		FUNDING SOURCE					RESPONSIBILITY				
ID	Task	FHWA	FTA	State	County	Total	Staff	CNY RPDB	State	County	Total
44.21.00	Program Administration and Support	\$239,606	\$45,177	\$53,397	\$17,799	\$355,979	\$219,783	\$65,000	\$53,397	\$17,799	\$355,979
44.24.00	Short-Range Transportation Planning	\$75,875	\$10,625	\$16,219	\$5,406	\$108,125	\$86,500	\$0	\$16,219	\$5,406	\$108,125
44.23.02	Long-Range Transportation Planning	\$612,250	\$160,750	\$144,938	\$48,313	\$966,250	\$773,000	\$0	\$144,938	\$48,313	\$966,250
44.25.00	Transportation Improvement Program	\$23,400	\$6,600	\$5,625	\$1,875	\$37,500	\$30,000	\$0	\$5,625	\$1,875	\$37,500
44.27.00	Other Activities	\$16,053	\$3,909	\$3,743	\$1,248	\$24,952	\$19,962	\$0	\$3,743	\$1,248	\$24,952
	<b>Total</b>	<b>\$967,184</b>	<b>\$227,061</b>	<b>\$223,921</b>	<b>\$74,640</b>	<b>\$1,492,806</b>	<b>\$1,129,245</b>	<b>\$65,000</b>	<b>\$223,921</b>	<b>\$74,640</b>	<b>\$1,492,806</b>
		<b>\$1,194,245</b>		<b>\$298,561</b>		<b>\$1,492,806</b>	<b>\$1,194,245</b>		<b>\$298,561</b>		<b>\$1,492,806</b>

AUDIT BUDGET						
ID	Category	Staff	CNY RPDB	State	County	Total
44.20.01	Salaries	\$503,173		\$102,780		\$605,952
44.20.02	Fringe	\$163,119		\$31,573		\$194,692
44.20.03	Travel	\$9,000				\$9,000
44.20.04	Equipment	\$27,000				\$27,000
44.20.05	Supplies	\$7,500				\$7,500
44.20.06	Contractual	\$338,033	\$65,000		\$74,640	\$477,673
44.20.07	Other	\$8,170				\$8,170
44.20.08	Indirect	\$73,250		\$89,568		\$162,818
	<b>Total</b>	<b>\$1,129,245</b>	<b>\$65,000</b>	<b>\$223,921</b>	<b>\$74,640</b>	<b>\$1,492,807</b>
		<b>\$1,194,245</b>		<b>\$298,561</b>		<b>\$1,492,806</b>
		<b>\$1,194,245</b>				<b>\$1,492,806</b>

**TABLE 3**  
**2009 - 2010 SUMMARY BUDGET**  
**FHWA BUDGET**

TASK BUDGET							
ID	Task	Total	FHWA	Staff	CNY RPDB	State	County
44.21.00	Program Administration and Support	\$299,508	\$239,606	\$184,917	\$54,689	\$44,926	\$14,975
44.24.00	Short-Range Transportation Planning	\$94,844	\$75,875	\$75,875		\$14,227	\$4,742
44.23.02	Long-Range Transportation Planning	\$765,313	\$612,250	\$612,250		\$114,797	\$38,266
44.25.00	Transportation Improvement Program	\$29,250	\$23,400	\$23,400		\$4,388	\$1,463
44.27.00	Other Activities	\$20,066	\$16,053	\$16,053		\$3,010	\$1,003
	<b>Total</b>	<b>\$1,208,980</b>	<b>\$967,184</b>	<b>\$912,495</b>	<b>\$54,689</b>	<b>\$181,347</b>	<b>\$60,449</b>

\$1,208,980

\$912,495	\$54,689	\$181,347	\$60,449
\$1,208,980			

AUDIT BUDGET						
ID	Category	Total	Staff	CNY RPDB	State	County
44.20.01	Personnel / Salaries	\$517,397	\$434,159		\$83,238	
44.20.02	Fringe	\$167,515	\$141,945		\$25,570	
44.20.03	Travel	\$7,854	\$7,854			
44.20.04	Equipment	\$23,633	\$23,633			
44.20.05	Supplies	\$6,640	\$6,640			
44.20.06	Contractual	\$343,200	\$228,062	\$54,689		\$60,449
44.20.07	Other	\$7,181	\$7,181			
44.20.08	Indirect	\$135,560	\$63,021		\$72,539	
	<b>Total</b>	<b>\$1,208,980</b>	<b>\$912,495</b>	<b>\$54,689</b>	<b>\$181,347</b>	<b>\$60,449</b>

\$1,208,980	\$912,495	\$54,689	\$181,347	\$60,449
\$1,208,980				

**TABLE 4**  
**2009 - 2010 SUMMARY BUDGET**  
**FTA BUDGET**

<b>TASK BUDGET</b>							
ID	Task	Total	FTA	Staff	CNY RPDB	State	County
44.21.00	Program Administration and Support	\$56,471	\$45,177	\$34,866	\$10,311	\$8,471	\$2,824
44.24.00	Short-Range Transportation Planning	\$13,281	\$10,625	\$10,625		\$1,992	\$664
44.23.02	Long-Range Transportation Planning	\$200,938	\$160,750	\$160,750		\$30,141	\$10,047
44.25.00	Transportation Improvement Program	\$8,250	\$6,600	\$6,600		\$1,238	\$413
44.27.00	Other Activities	\$4,886	\$3,909	\$3,909		\$733	\$244
	<b>Total</b>	<b>\$283,826</b>	<b>\$227,061</b>	<b>\$216,750</b>	<b>\$10,311</b>	<b>\$42,574</b>	<b>\$14,191</b>

<b>\$283,826</b>	<b>\$216,750</b>	<b>\$10,311</b>	<b>\$42,574</b>	<b>\$14,191</b>
<b>\$283,826</b>				

<b>AUDIT BUDGET</b>						
ID	Category	Total	Staff	CNY RPDB	State	County
44.20.01	Salaries	\$88,556	\$69,014		\$19,541	
44.20.02	Fringe	\$27,178	\$21,175		\$6,003	
44.20.03	Travel	\$1,146	\$1,146			
44.20.04	Equipment	\$3,367	\$3,367			
44.20.05	Supplies	\$860	\$860			
44.20.06	Contractual	\$134,473	\$109,971	\$10,311		\$14,191
44.20.07	Other	\$989	\$989			
44.20.08	Indirect	\$27,259	\$10,229		\$17,030	
	<b>Total</b>	<b>\$283,826</b>	<b>\$216,750</b>	<b>\$10,311</b>	<b>\$42,574</b>	<b>\$14,191</b>

<b>\$283,826</b>	<b>\$216,750</b>	<b>\$10,311</b>	<b>\$42,574</b>	<b>\$14,191</b>
<b>\$283,826</b>				

**TABLE 5**  
**2009 - 2010 SUMMARY BUDGET**  
**TOTAL FEDERAL BUDGETS**

<b>TASK BUDGET</b>			
<b>ID</b>	<b>Task</b>	<b>Total Federal</b>	<b>Total</b>
44.21.00	Program Administration and Support	\$284,783	\$355,979
44.24.00	Short-Range Transportation Planning	\$86,500	\$108,125
44.23.02	Long-Range Transportation Planning	\$773,000	\$966,250
44.25.00	Transportation Improvement Program	\$30,000	\$37,500
44.27.00	Other Activities	\$19,962	\$24,952
	<b>Total</b>	<b>\$1,194,245</b>	<b>\$1,492,806</b>

<b>AUDIT BUDGET</b>			
<b>ID</b>	<b>Category</b>	<b>Total Federal</b>	<b>Total</b>
44.20.01	Personnel / Salaries	\$503,173	\$605,952
44.20.02	Fringe	\$163,119	\$194,692
44.20.03	Travel	\$9,000	\$9,000
44.20.04	Equipment	\$27,000	\$27,000
44.20.05	Supplies	\$7,500	\$7,500
44.20.06	Contractual	\$403,033	\$477,673
44.20.07	Other	\$8,170	\$8,170
44.20.08	Indirect	\$73,250	\$162,818
	<b>Total</b>	<b>\$1,194,245</b>	<b>\$1,492,806</b>

<b>\$1,194,245</b>	<b>\$1,492,806</b>
--------------------	--------------------

**TABLE 6**  
**2009 - 2010 SUMMARY BUDGET**  
**TOTAL AUDITABLE BUDGET**

<b>AUDIT BUDGET</b>						
<b>ID</b>	<b>Category</b>	<b>Total</b>	<b>Staff</b>	<b>CNY RPDB</b>	<b>State</b>	<b>County</b>
44.20.01	Personnel / Salaries	\$605,952	\$503,173		\$102,780	
44.20.02	Fringe	\$194,692	\$163,119		\$31,573	
44.20.03	Travel	\$9,000	\$9,000			
44.20.04	Equipment	\$27,000	\$27,000			
44.20.05	Supplies	\$7,500	\$7,500			
44.20.06	Contractual	\$477,673	\$338,033	\$65,000		\$74,640
44.20.07	Other	\$8,170	\$8,170			
44.20.08	Indirect	\$162,818	\$73,250		\$89,568	
	<b>Total</b>	<b>\$1,492,806</b>	<b>\$1,129,245</b>	<b>\$65,000</b>	<b>\$223,921</b>	<b>\$74,640</b>

<b>\$1,492,806</b>	<b>\$1,129,245</b>	<b>\$65,000</b>	<b>\$223,921</b>	<b>\$74,640</b>
<b>\$1,492,806</b>				